

## Safety instructions

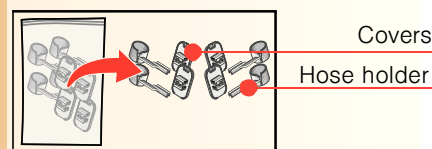
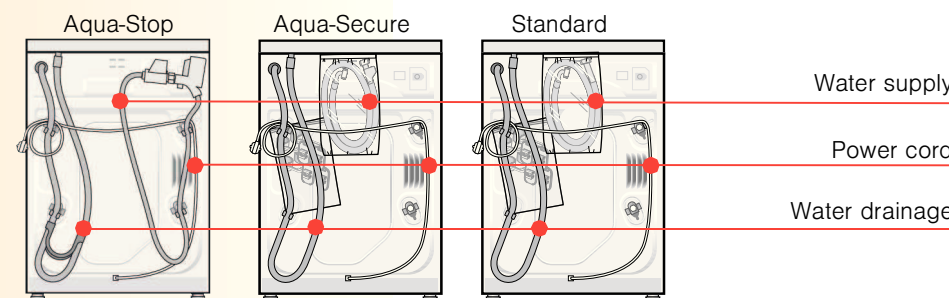
- The washer dryer is heavy – take care when lifting it.
- Warning: frozen hoses may tear/burst. Do not install the washer dryer outdoors or in areas where there is a risk of frost.
- The washer dryer may be damaged. Do not lift by projecting components (e.g. washer dryer door).
- In addition to the instructions mentioned here, special regulations of the relevant water and power supply companies may apply.
- If in doubt, have the appliance connected by a technician.
- Lay hoses and cables in such a way that there is no risk that they can be tripped over.

## Environmental disposal

- Dispose of packaging in an environmentally friendly manner.
- This appliance has been identified in accordance with the European Directive 2002/96/EEC on Waste Electrical and Electronic Equipment (WEEE). The Directive specifies a framework for the return and recycling of waste appliances and is valid throughout Europe.

## Scope of delivery according to model

Humidity in the drum is caused by the final inspection.



- Depending on the connection**
- A 24–40 mm dia. hose clip may also be required for connecting the siphon (available from specialist retailers). →Page 4: **Water connection**
- Useful tool**
- Spirit level for aligning the washer dryer.
  - Wrench for adjusting the machine feet.

## Installation area

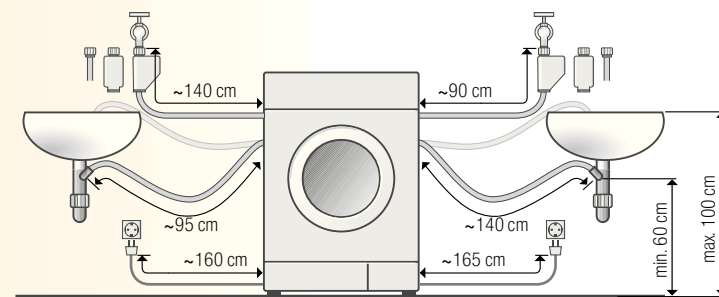
- Stability is important to prevent the machine from wandering.
- The installation area must be firm and level.
- Soft floors/floor coverings are not suitable.
- Ensure the area is well ventilated to achieve good drying performance.

- If installing the appliance on a pedestal**
- It is **essential** to secure the washer dryer feet with holding brackets \*.

- If installing the appliance on a wooden joist floor**
- If possible, install the washer dryer in a corner.
  - Screw a water-resistant wooden panel (min. 30 mm thick) to the floor.
  - It is **essential** to secure the washer dryer feet with holding brackets \*.
- \* order no. WMZ 2200, WX 9756

## Hose and cable lengths

Connection on left side or Connection on right side



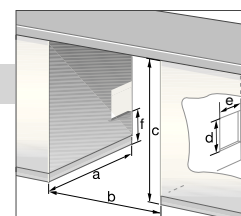
- Note:** if hose holders are used, the hose lengths may be reduced. Available from dealer/customer service:
- Aqua-Stop extension hose \*\*, approx. 2.50 m.
  - Longer supply hose, approx. 2.20 m, for standard model.
- \*\* order no. WMZ 2380, WZ 10130

## Built-under/Built-in appliance

- Build-under/build-in before connection to the power supply.

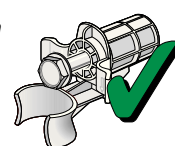
**Installed in between kitchen units (built-under or built-in)**

- Dimension requirement of kitchen unit:  
**a = 650 mm, b = 620 mm, c = 850 mm**
- Install washer dryer only under a continuous worktop that is connected firmly to the adjacent cupboards.
- The installation area must be well ventilated, otherwise the washer dryer will operate below optimum performance. Dimension of ventilation cross-section:  
**d x e = 200 mm x 100 mm, f = 365 mm**  
Distance between wall and machine: **50 mm**

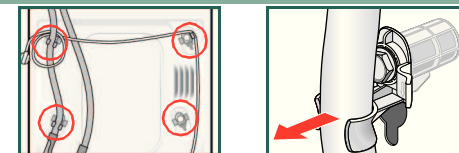


## Removing transport bolts

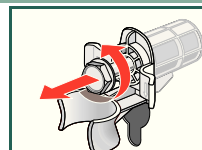
- Before using the appliance for the first time, always remove and retain all 4 transport bolts.
- If transporting the appliance subsequently, always re-install the transport bolts – this prevents damage to the machine. →Page 6
- Retain the screw and sleeve.



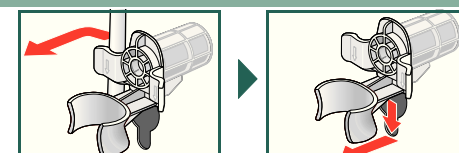
1. Take the hoses out of the holder and the elbow.



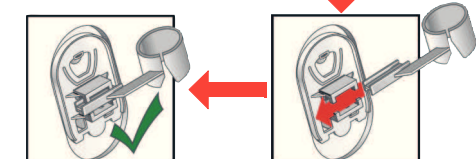
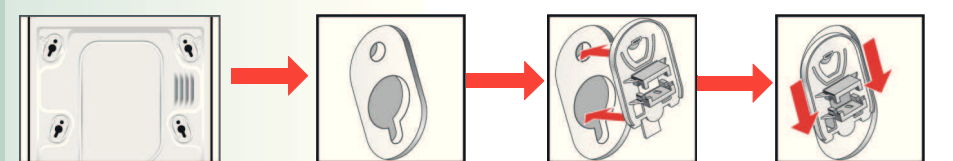
2. Undo and remove all 4 transport bolts.



3. Take the power cord out of the holders. Remove the sleeves.



4. Insert the covers and lock them in place by pressing on the locking hook. Insert the hose holders.



5. Fix the hoses in the hose holders.

## Water connection

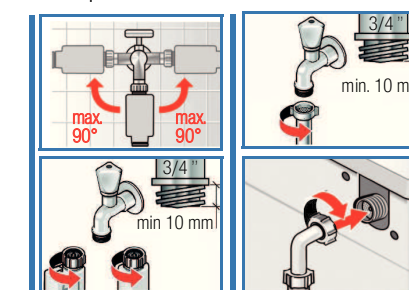
- Risk of electric shock! Do not immerse the Aqua-Stop safety device in water (contains an electric valve).
- To prevent leakage or water damage, follow the instructions in this chapter.
- **Attention:** operate the washer dryer with cold drinking water only. Do not connect to the mixer tap of a pressureless hot-water heater.
- Do not use a used inlet hose. Only use the inlet hose supplied or one which was purchased from an authorised specialist dealer.
- If in doubt, have the appliance connected by a technician.

### Water supply

- Water inlet hose:**  
**Attention:** do not kink, crush, modify or cut through (strength is no longer guaranteed).  
**Optimum water pressure in the mains: 100–1000 kPa (1–10 bar)**
- When the tap is turned on, the water flow is at least 8 l/min.
  - If the water pressure is higher, install a pressure reducing valve.

1. Connect the water supply hose to the tap. Tighten plastic screw fittings by hand only.

**Model:** Aqua-Stop Aqua-Secure Standard



2. Carefully turn on the tap and check that the connection points are not leaking. **Attention:** the screw connection is under water mains pressure.

### Water drainage

- Water drainage hose:**  
**Attention:** do not kink or stretch.

**Height difference between installation area and outlet: 60–100 cm**

#### Drainage into a sink/bath tub:

- Attention:** secure the drainage hose to prevent it from slipping out of the sink.

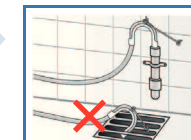
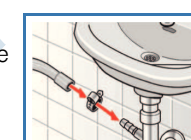
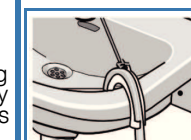
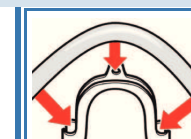
- Attention:** the plug must not be in the plug hole. When the water is being pumped out of the washer dryer, check that the water drains away quickly enough. Do not immerse the end of the drainage hose in the water that has been pumped out. There is a risk that water will be drawn back into the washer dryer.

#### Drainage into a siphon:

- Attention:** secure the connection with a 24–40 mm dia. hose clip (available from a specialist retailer).

#### Drainage into a plastic pipe with rubber sleeve:

- Attention:** Secure the drainage hose to prevent it from slipping out of the drain.

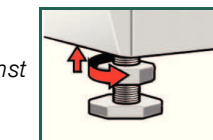
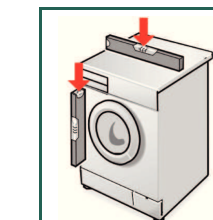
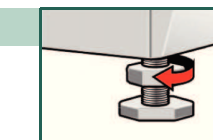


## Alignment

- High levels of noise, intense vibrations and “wandering” may be due to incorrect alignment.
- Alignment will be carried out by customer service or authorised technicians, if you want to align the machine by yourself please use a spirit level.

### Aligning the washer dryer with a spirit level.

1. Undo the lock nut in a clockwise direction using a wrench.
2. Adjust the height by turning the appliance foot. All four appliance feet must be placed firmly on the floor. The washer dryer must not be able to wobble. Check the alignment of the washer dryer with a spirit level and correct if necessary.
3. Tighten the lock nut against the housing. Hold the foot in place and make sure that the height is not adjusted. The lock nuts on all four appliance feet must be screwed tightly against the housing.



## Electrical connection

- Connect the washer dryer to an alternating current via a correctly installed earthed socket only.
- The mains voltage and specifications on the washer dryer must match. →Page 6: **Technical specifications**
- For information about the connected load and required fuse. →Page 6: **Technical specifications**
- Ensure that:
  - the mains plug and socket are compatible,
  - the cable cross-section is adequate,
  - the earthing system has been installed correctly.
- A damaged power cord may be replaced by an electrician only. A replacement power cord is available from customer service.
- Do not use multiple plugs/connectors or extension cables.
- If a residual current operated circuit-breaker is used, use only a type which guarantees compliance with the currently valid regulations.
- Mains plug:
  - do not insert into/pull out of the socket with damp hands.
  - do not pull the plug out of the socket by pulling on the power cord.
  - never pull out the plug while the appliance is in operation.



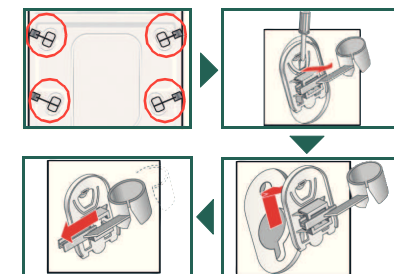
## Transportation, e.g. if moving house

### 1. Before transporting the washer dryer:

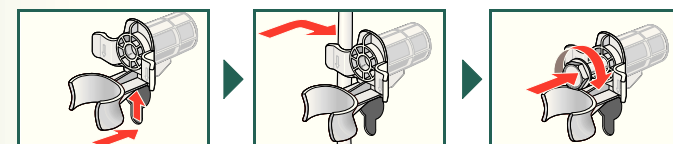
1. Turn off the tap.
2. Release the water pressure in the supply hose.  
→Page 8: **Filter in the water inlet hose**
3. Drain any residual detergent solution.  
→Page 8: **Drain pump**
4. Isolate the washer dryer from the power supply.
5. Remove the hoses.

### 2. Installing transport bolts:

1. Remove the covers. If necessary, remove the retainer according to the right picture.



2. Insert all 4 sleeves. Clamp the power cord into the holders. Insert the screws and tighten.



The transport bolts **must** be removed after transportation. →Page 3



To prevent unused detergent from flowing into the outlet during the next wash: Pour 1 litre of water into dispenser **II** and start the **Empty (Drain)** or **Spin** programme.

## Technical specifications

● Dimensions (width x depth x height)	600 x 600 x 850 mm
● Weight	84,5 kg
● Power supply	Nominal voltage 220–240 V, 50 Hz Max. current 10A Max. washing power 2400 W Max. drying power 1900 W
● Water pressure	100–1000 kPa (1–10 bar)
● Drain height	60–100 cm
● Test programmes	According valid European Standard EN50229

6

## Care



- Risk of electric shock! Pull out the mains plug!
- Risk of explosion! No solvents!

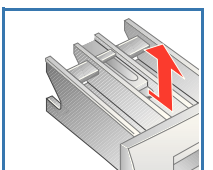
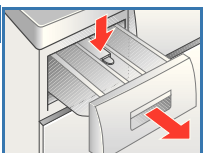
### i Machine housing, control panel

- Wipe with a soft, damp cloth.
- Do not use any abrasive cloths, scourers or cleaning agents (stainless steel cleaners).
- Immediately remove laundry and cleaning agent residues.
- Do not clean the appliance with a water jet.

### i Clean the detergent drawer ...

... if it contains detergent or fabric softener residue.

1. Pull out the drawer up to the stop position, press down the latch on the insert and remove the drawer completely.
2. Remove insert: pull insert upwards with finger.
3. Clean the detergent dispenser and the insert with water and a brush.
4. Refit the insert and secure in place (the cylinder should fit over the guide pin).
5. Insert the detergent drawer.
6. Leave the detergent drawer open so that residual water can evaporate.



### i Drum

Leave the washer dryer door open after washing so that the drum can dry. Rust stains – use chlorine-free cleaning agent, not steel wool.

### i Descaling

*No laundry in the machine!*

This is not necessary if the detergent is dosed correctly. However, if it is necessary, follow the instructions of the descaler manufacturer. Suitable descaling products can be purchased from our website or after-sales service.

## After-sales service

- If you cannot rectify the fault yourself → *Operating instructions, page 12, 13: What to do if...*, please contact our after-sales service. We will always find a suitable solution and will avoid a visit from a service technician wherever possible.

● The contact details for all countries can be found in the enclosed after-sales service directory.

● Please give the after-sales service the product number (E-Nr.) and the production number (FD) of the appliance.

E-Nr. \_\_\_\_\_ FD \_\_\_\_\_

Product number      Production number

*You will find this information: on the inside of the washer dryer door\*/opened service flap\* and rear of the appliance. \*depending on the model*

- **Rely on the professionalism of the manufacturer.** Please contact us. This will ensure that the repair is carried out by trained service technicians who arrive equipped with genuine spare parts for your appliance.

7

## Maintenance

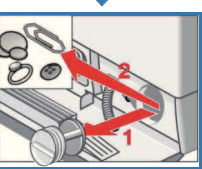
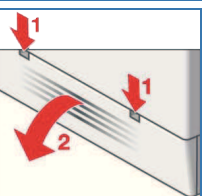


- Risk of scalding! Allow detergent solution to cool down!
- Turn off the tap!

### Drain pump

Set the programme selector to **Off**, disconnect the mains plug.

1. Open and remove the service flap.
2. Release the drainage hose from the clip. Remove the sealing plug from the drainage hose, allow the detergent solution to flow out. Push the sealing cap back in.
3. Remove the pump cap. Remove foreign objects/loose debris/fluff from inside and clean the pump. (impeller in the pump must be able to rotate).
4. Clean any residual lye or fluff from the thread of the pump cap and pumphousing.
5. Attach the pump cap and screw it on tight until the stop, handle is upright. Place the drainage hose back in the retainer.
6. Place the service flap back on and close.



To prevent unused detergent from flowing straight into the drain during the next wash cycle: pour 1 litre of water into compartment **II** and start the **Spin** programme. Then select and start a new washing programme with detergent as usual.

### Filter in the water inlet hose

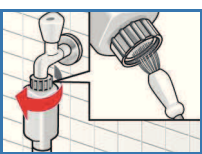
**Risk of electric shock**  
Do not immerse the Aqua-Stop safety device in water (it contains an electric valve).

#### Reduce the water pressure in the supply hose:

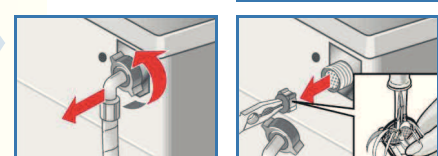
1. Turn off the tap.
2. Select any programme (except **Spin** or **Empty(Drain)**).
3. Touch **Start** button and allow the programme to run for approx. 40 seconds.
4. Set the programme selector to **Off**. Disconnect the mains plug.

#### Clean the filter:

1. Depending on model: Remove the supply hose from the tap. Clean the filter with a small brush.



**and/or on standard and Aqua-Secure models:** Remove the hose from the rear, remove the filter using pliers and clean the filter.



2. Reconnect the supply hose and check if it is tight.

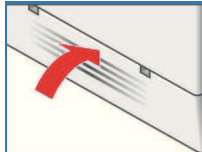
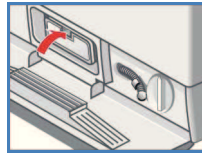
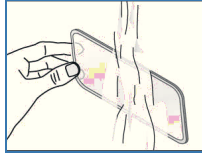
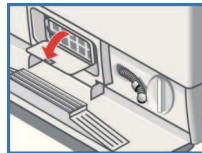
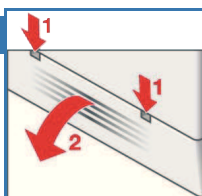
8

## Maintenance

### Air inlet filter

Set the programme selector to **Off**, disconnect the mains plug.

1. Open and remove the service flap.
2. Remove the air inlet filter.
3. Clean the fluff on the air inlet filter with water and a brush.
4. Place the air inlet filter back on and close.
5. Place the service flap back on and close.



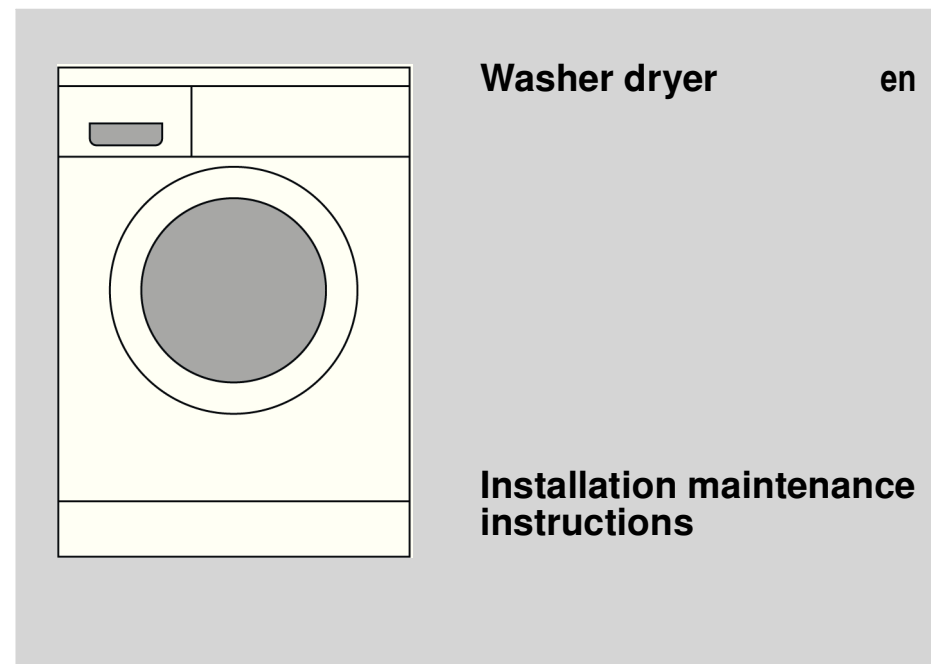
## Aqua-Stop warranty

*for appliances with Aqua-Stop only*

In addition to warranty claims against the seller based on the contract of sale and in addition to our appliance warranty, we shall pay damages under the following conditions:

1. If water damage was caused by a fault in our Aqua-Stop system, we shall compensate private users for damage.
2. The liability warranty applies to the service life of the appliance.
3. A claim can only be made under the warranty if the appliance and Aqua-Stop have been correctly installed and connected according to our instructions; this also includes a correctly installed Aqua-Stop extension (genuine accessory). Our warranty does not extend to defective supply lines or fittings up to the Aqua-Stop connection on the tap.
4. Appliances which feature Aqua-Stop can be left unattended during operation and it is not necessary to turn off the tap afterwards. The tap should only be turned off if you are away for a prolonged period, e.g. several weeks holiday.

9



## Contents

	Page
■ Safety instructions	1
■ Environmental disposal	1
■ Scope of delivery	1
■ Installation area	2
■ Hose and cable lengths	2
■ Built-under/Built-in appliance	2
■ Removing transport bolts	3
■ Water connection	4
■ Alignment	5
■ Electrical connection	5
■ Transportation, e.g. if moving house	6
■ Technical specifications	6
■ Care	7
■ After-sales service	7
■ Maintenance	8/9
■ Aqua-Stop warranty	9



**Read these instructions before switching on the washer dryer. Also follow the separate Operating instructions. Retain all documents for subsequent use or for the next owner.**



## Safety instructions

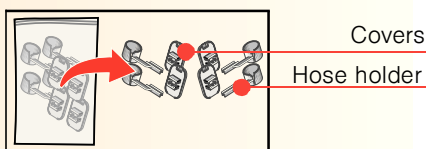
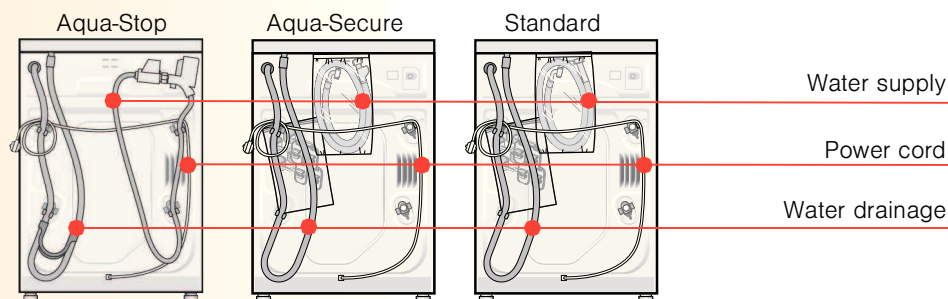
- The washer dryer is heavy – take care when lifting it.
- Warning: frozen hoses may tear/burst. Do not install the washer dryer outdoors or in areas where there is a risk of frost.
- The washer dryer may be damaged. Do not lift by projecting components (e.g. washer dryer door).
- In addition to the instructions mentioned here, special regulations of the relevant water and power supply companies may apply.
- If in doubt, have the appliance connected by a technician.
- Lay hoses and cables in such a way that there is no risk that they can be tripped over.

## Environmental disposal



- Dispose of packaging in an environmentally friendly manner.
- This appliance has been identified in accordance with the European Directive 2002/96/EEC on Waste Electrical and Electronic Equipment (WEEE). The Directive specifies a framework for the return and recycling of waste appliances and is valid throughout Europe.

## Scope of delivery according to model Humidity in the drum is caused by the final inspection.



### Depending on the connection

- A 24–40 mm dia. hose clip may also be required for connecting the siphon (available from specialist retailers). →Page 4: **Water connection**

### Useful tool

- Spirit level for aligning the washer dryer.
- Wrench for adjusting the machine feet.

## Installation area



- Stability is important to prevent the machine from wandering.
- The installation area must be firm and level.
- Soft floors/floor coverings are not suitable.
- Ensure the area is well ventilated to achieve good drying performance.



### If installing the appliance on a pedestal

- It is **essential** to secure the washer dryer feet with holding brackets \*.



### If installing the appliance on a wooden joist floor

- If possible, install the washer dryer in a corner.
  - Screw a water-resistant wooden panel (min. 30 mm thick) to the floor.
  - It is **essential** to secure the washer dryer feet with holding brackets \*.
- \* order no. WMZ 2200, WX 9756

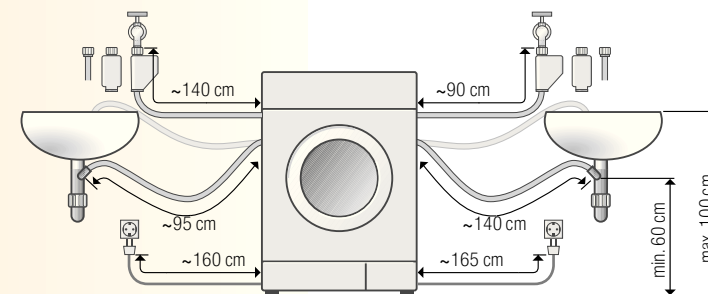
## Hose and cable lengths



### Connection on left side

or

### Connection on right side



**Note:** if hose holders are used, the hose lengths may be reduced.

Available from dealer/customer service:

- Aqua-Stop extension hose \*\*, approx. 2.50 m.
- Longer supply hose, approx. 2.20 m, for standard model.

\*\* order no. WMZ 2380, WZ 10130

## Built-under/Built-in appliance

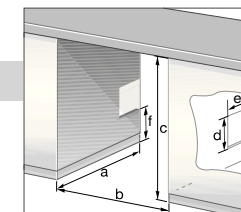


*Build-under/build-in before connection to the power supply.*



### Installed in between kitchen units (built-under or built-in)

- Dimension requirement of kitchen unit:  
**a = 650 mm, b = 620 mm, c = 850 mm**
  - Install washer dryer only under a continuous worktop that is connected firmly to the adjacent cupboards.
  - The installation area must be well ventilated, otherwise the washer dryer will operate below optimum performance.
- Dimension of ventilation cross-section:  
**d x e = 200 mm x 100 mm, f = 365 mm**  
Distance between wall and machine: **50 mm**

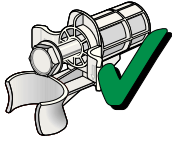




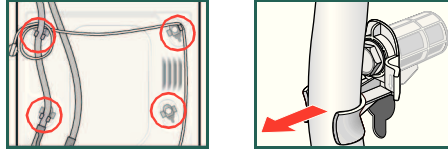
# Removing transport bolts



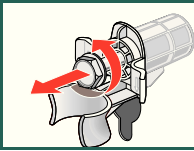
- Before using the appliance for the first time, always remove and retain all 4 transport bolts.
- If transporting the appliance subsequently, always re-install the transport bolts – this prevents damage to the machine. →Page 6
- Retain the screw and sleeve.



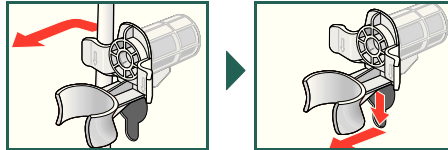
1. Take the hoses out of the holder and the elbow.



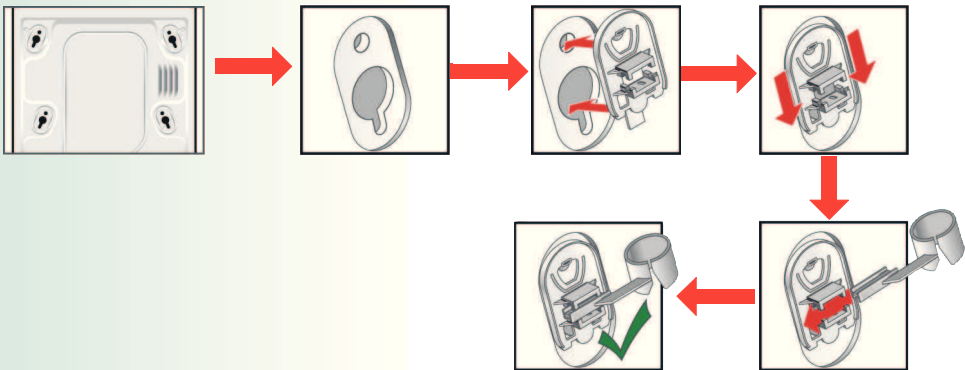
2. Undo and remove all 4 transport bolts.



3. Take the power cord out of the holders. Remove the sleeves.



4. Insert the covers and lock them in place by pressing on the locking hook. Insert the hose holders.



5. Fix the hoses in the hose holders.

# Water connection



- Risk of electric shock! Do not immerse the Aqua-Stop safety device in water (contains an electric valve).
- To prevent leakage or water damage, follow the instructions in this chapter.
- **Attention:** operate the washer dryer with cold drinking water only. Do not connect to the mixer tap of a pressureless hot-water heater.
- Do not use a used inlet hose. Only use the inlet hose supplied or one which was purchased from an authorised specialist dealer.
- If in doubt, have the appliance connected by a technician.



## Water supply

### Water inlet hose:

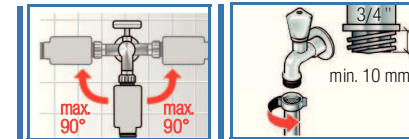
**Attention:** do not kink, crush, modify or cut through (strength is no longer guaranteed).

**Optimum water pressure in the mains: 100–1000 kPa (1–10 bar)**

- When the tap is turned on, the water flow is at least 8 l/min.
- If the water pressure is higher, install a pressure reducing valve.

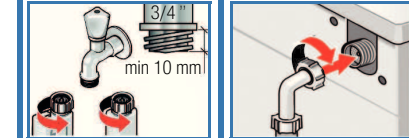
**Model:** Aqua-Stop Aqua-Secure Standard

1. Connect the water supply hose to the tap. Tighten plastic screw fittings by hand only.



2. Carefully turn on the tap and check that the connection points are not leaking.

**Attention:** the screw connection is under water mains pressure.



## Water drainage

### Water drainage hose:

**Attention:** do not kink or stretch.

**Height difference between installation area and outlet: 60–100 cm**

### Drainage into a sink/bath tub:

**Attention:** secure the drainage hose to prevent it from slipping out of the sink.

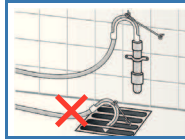
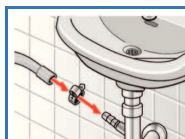
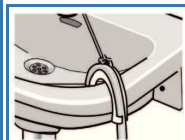
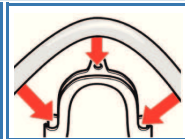
**Attention:** the plug must not be in the plug hole. When the water is being pumped out of the washer dryer, check that the water drains away quickly enough. Do not immerse the end of the drainage hose in the water that has been pumped out. There is a risk that water will be drawn back into the washer dryer.

### Drainage into a siphon:


**Attention:** secure the connection with a 24–40 mm dia. hose clip (available from a specialist retailer).


### Drainage into a plastic pipe with rubber sleeve:

**Attention:** Secure the drainage hose to prevent it from slipping out of the drain.



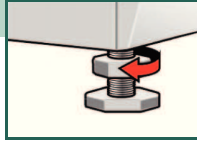
# Alignment

 High levels of noise, intense vibrations and “wandering” may be due to incorrect alignment.

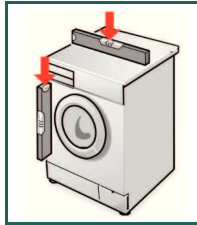
 Alignment will be carried out by customer service or authorised technicians, if you want to align the machine by yourself please use a spirit level.

## Aligning the washer dryer with a spirit level.

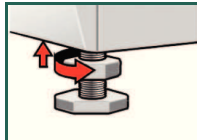
1. Undo the lock nut in a clockwise direction using a wrench.



2. Adjust the height by turning the appliance foot.  
*All four appliance feet must be placed firmly on the floor.  
The washer dryer must not be able to wobble.*  
Check the alignment of the washer dryer with a spirit level and correct if necessary.



3. Tighten the lock nut against the housing.  
Hold the foot in place and make sure that the height is not adjusted.  
*The lock nuts on all four appliance feet must be screwed tightly against the housing.*



# Electrical connection

- Connect the washer dryer to an alternating current via a correctly installed earthed socket only.
- The mains voltage and specifications on the washer dryer must match.  
→Page 6: **Technical specifications**
- For information about the connected load and required fuse.  
→Page 6: **Technical specifications**
- Ensure that:
  - the mains plug and socket are compatible,
  - the cable cross-section is adequate,
  - the earthing system has been installed correctly.
- A damaged power cord may be replaced by an electrician only.  
A replacement power cord is available from customer service.
- Do not use multiple plugs/connectors or extension cables.
- If a residual current operated circuit-breaker is used, use only a type which guarantees compliance with the currently valid regulations.
- Mains plug:
  - do not insert into/pull out of the socket with damp hands.
  - do not pull the plug out of the socket by pulling on the power cord.
  - never pull out the plug while the appliance is in operation.

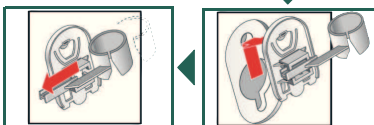
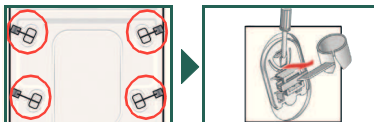
# Transportation, e.g. if moving house

## 1. Before transporting the washer dryer:

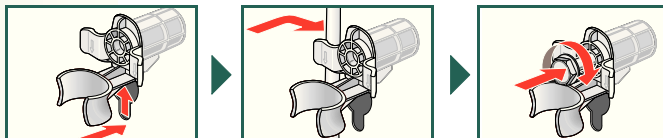
1. Turn off the tap.
2. Release the water pressure in the supply hose.  
→Page 8: **Filter in the water inlet hose**
3. Drain any residual detergent solution.  
→Page 8: **Drain pump**
4. Isolate the washer dryer from the power supply.
5. Remove the hoses.

## 2. Installing transport bolts:

1. Remove the covers. If necessary, remove the retainer according to the right picture.



2. Insert all 4 sleeves. Clamp the power cord into the holders. Insert the screws and tighten.



The transport bolts **must** be removed after transportation. →Page 3



To prevent unused detergent from flowing into the outlet during the next wash: Pour 1 litre of water into dispenser **II** and start the **Empty (Drain)** or **Spin** programme.

# Care



- Risk of electric shock!  
Pull out the mains plug!
- Risk of explosion! No solvents!

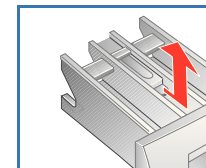
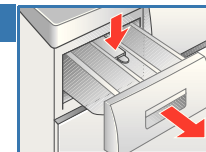
## i Machine housing, control panel

- Wipe with a soft, damp cloth.
- Do not use any abrasive cloths, scourers or cleaning agents (stainless steel cleaners).
- Immediately remove laundry and cleaning agent residues.
- Do not clean the appliance with a water jet.

## i Clean the detergent drawer ...

... if it contains detergent or fabric softener residue.

1. Pull out the drawer up to the stop position, press down the latch on the insert and remove the drawer completely.
2. Remove insert: pull insert upwards with finger.
3. Clean the detergent dispenser and the insert with water and a brush.
4. Refit the insert and secure in place (the cylinder should fit over the guide pin).
5. Insert the detergent drawer.
6. Leave the detergent drawer open so that residual water can evaporate.



## i Drum

Leave the washer dryer door open after washing so that the drum can dry. Rust stains – use chlorine-free cleaning agent, not steel wool.

## i Descaling

*No laundry in the machine!*

This is not necessary if the detergent is dosed correctly. However, if it is necessary, follow the instructions of the descaler manufacturer. Suitable descaling products can be purchased from our website or after-sales service.

# Technical specifications

● Dimensions (width x depth x height)	600 x 600 x 850 mm
● Weight	84,5 kg
● Power supply	Nominal voltage 220–240 V, 50 Hz Max. current 10A Max. washing power 2400 W Max. drying power 1900 W
● Water pressure	100–1000 kPa (1–10 bar)
● Drain height	60–100 cm
● Test programmes	According valid European Standard EN50229

# After-sales service

- If you cannot rectify the fault yourself →*Operating instructions, page 12, 13: What to do if...*, please contact our after-sales service. We will always find a suitable solution and will avoid a visit from a service technician wherever possible.
- The contact details for all countries can be found in the enclosed after-sales service directory.
- Please give the after-sales service the product number (E-Nr.) and the production number (FD) of the appliance.

E-Nr. _____	FD _____
-------------	----------

Product number      Production number

*You will find this information:  
on the inside of the washer dryer door\*/opened  
service flap\* and rear of the appliance.  
\*depending on the model*

- **Rely on the professionalism of the manufacturer.** Please contact us. This will ensure that the repair is carried out by trained service technicians who arrive equipped with genuine spare parts for your appliance.

# Maintenance



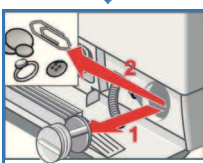
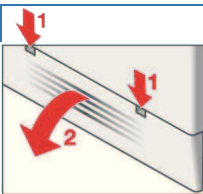
- Risk of scalding!  
Allow detergent solution to cool down!
- Turn off the tap!



## Drain pump

Set the programme selector to **Off**, disconnect the mains plug.

1. Open and remove the service flap.
2. Release the drainage hose from the clip. Remove the sealing plug from the drainage hose, allow the detergent solution to flow out. Push the sealing cap back in.
3. Remove the pump cap. Remove foreign objects/loose debris/fluff from inside and clean the pump. (impeller in the pump must be able to rotate).
4. Clean any residual lye or fluff from the thread of the pump cap and pumphousing.
5. Attach the pump cap and screw it on tight until the stop, handle is upright. Place the drainage hose back in the retainer.
6. Place the service flap back on and close.



To prevent unused detergent from flowing straight into the drain during the next wash cycle: pour 1 litre of water into compartment **II** and start the **Spin** programme. Then select and start a new washing programme with detergent as usual.



## Filter in the water inlet hose



### Risk of electric shock

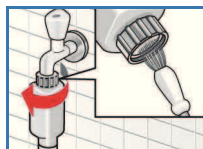
Do not immerse the Aqua-Stop safety device in water (it contains an electric valve).

### Reduce the water pressure in the supply hose:

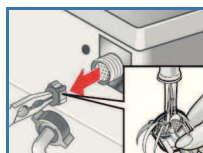
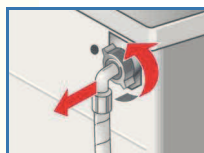
1. Turn off the tap.
2. Select any programme (except **Spin** or **Empty(Drain)**).
3. Touch Start button and allow the programme to run for approx. 40 seconds.
4. Set the programme selector to **Off**. Disconnect the mains plug.

### Clean the filter:

1. Depending on model: Remove the supply hose from the tap. Clean the filter with a small brush.



**and/or on standard and Aqua-Secure models:** Remove the hose from the rear, remove the filter using pliers and clean the filter.



2. Reconnect the supply hose and check if it is tight.

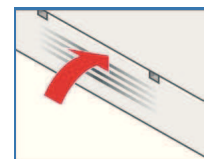
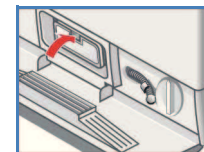
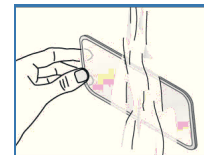
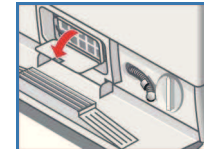
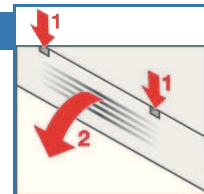
# Maintenance



## Air inlet filter

Set the programme selector to **Off**, disconnect the mains plug.

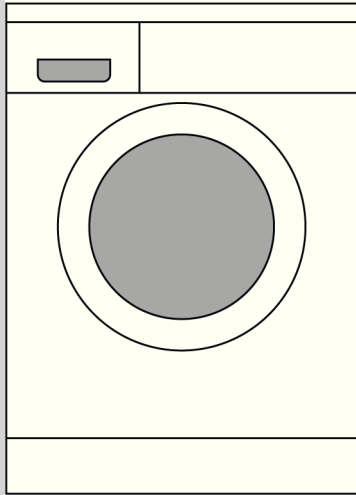
1. Open and remove the service flap.
2. Remove the air inlet filter.
3. Clean the fluff on the air inlet filter with water and a brush.
4. Place the air inlet filter back on and close.
5. Place the service flap back on and close.



## Aqua-Stop warranty for appliances with Aqua-Stop only

In addition to warranty claims against the seller based on the contract of sale and in addition to our appliance warranty, we shall pay damages under the following conditions:

1. If water damage was caused by a fault in our Aqua-Stop system, we shall compensate private users for damage.
2. The liability warranty applies to the service life of the appliance.
3. A claim can only be made under the warranty if the appliance and Aqua-Stop have been correctly installed and connected according to our instructions; this also includes a correctly installed Aqua-Stop extension (genuine accessory). Our warranty does not extend to defective supply lines or fittings up to the Aqua-Stop connection on the tap.
4. Appliances which feature Aqua-Stop can be left unattended during operation and it is not necessary to turn off the tap afterwards. The tap should only be turned off if you are away for a prolonged period, e.g. several weeks holiday.



# Washer dryer en

## Installation maintenance instructions

### Contents

Page

■ Safety instructions . . . . .	1
■ Environmental disposal . . . . .	1
■ Scope of delivery. . . . .	1
■ Installation area . . . . .	2
■ Hose and cable lengths . . . . .	2
■ Built-under/Built-in appliance. . . . .	2
■ Removing transport bolts . . . . .	3
■ Water connection . . . . .	4
■ Alignment . . . . .	5
■ Electrical connection . . . . .	5
■ Transportation, e.g. if moving house . . . . .	6
■ Technical specifications. . . . .	6
■ Care . . . . .	7
■ After-sales service . . . . .	7
■ Maintenance . . . . .	8/9
■ Aqua-Stop warranty . . . . .	9



**Read these instructions before switching on the washer dryer.  
Also follow the separate Operating instructions.  
Retain all documents for subsequent use or for the next owner.**