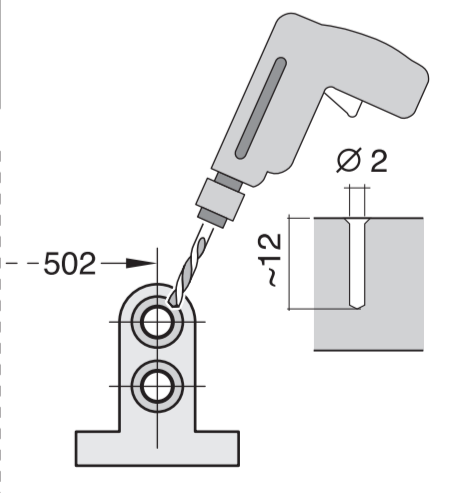
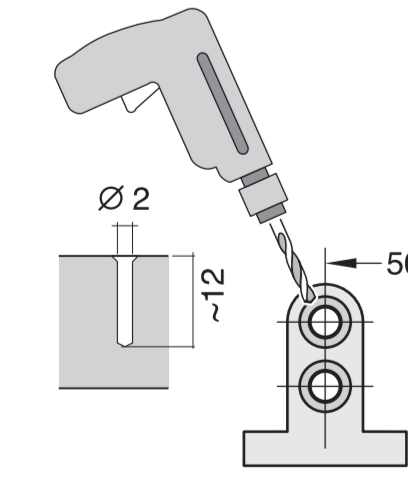
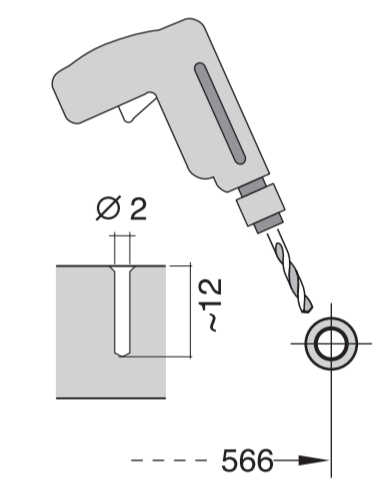
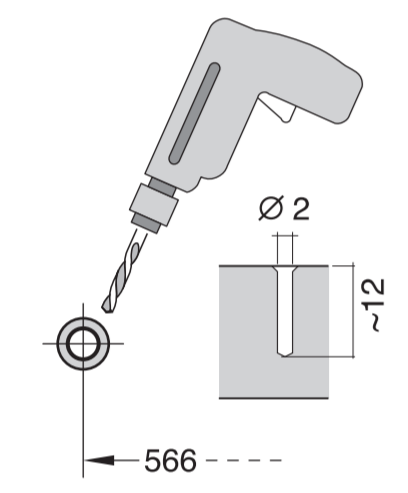
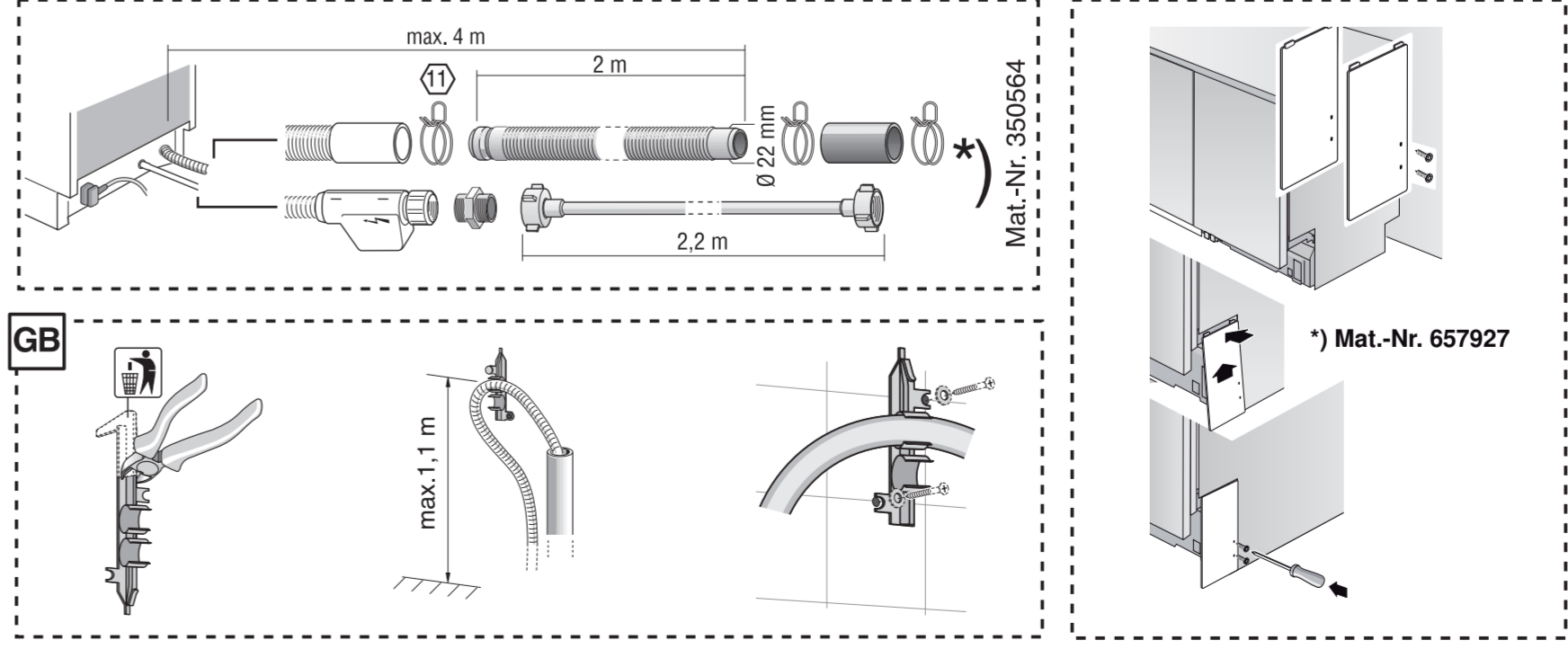
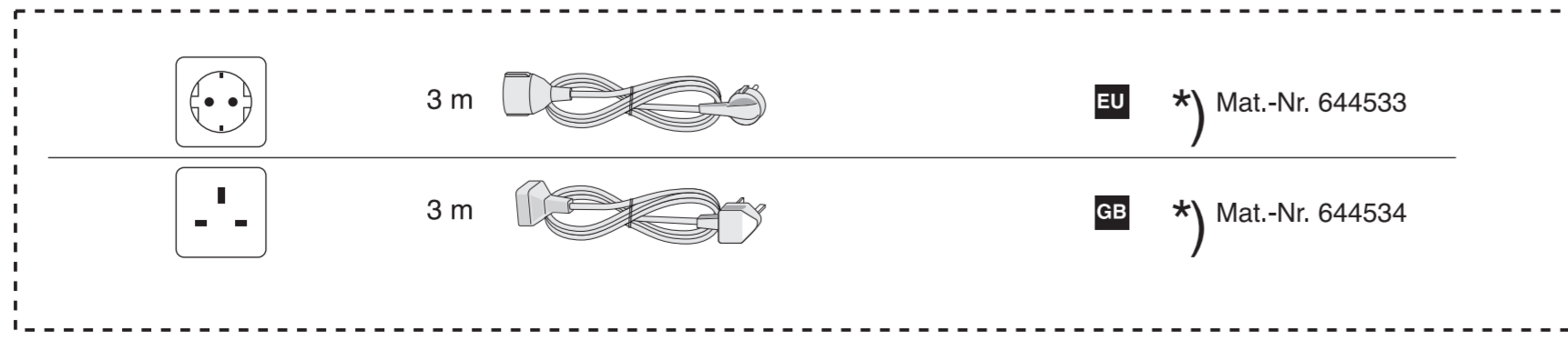
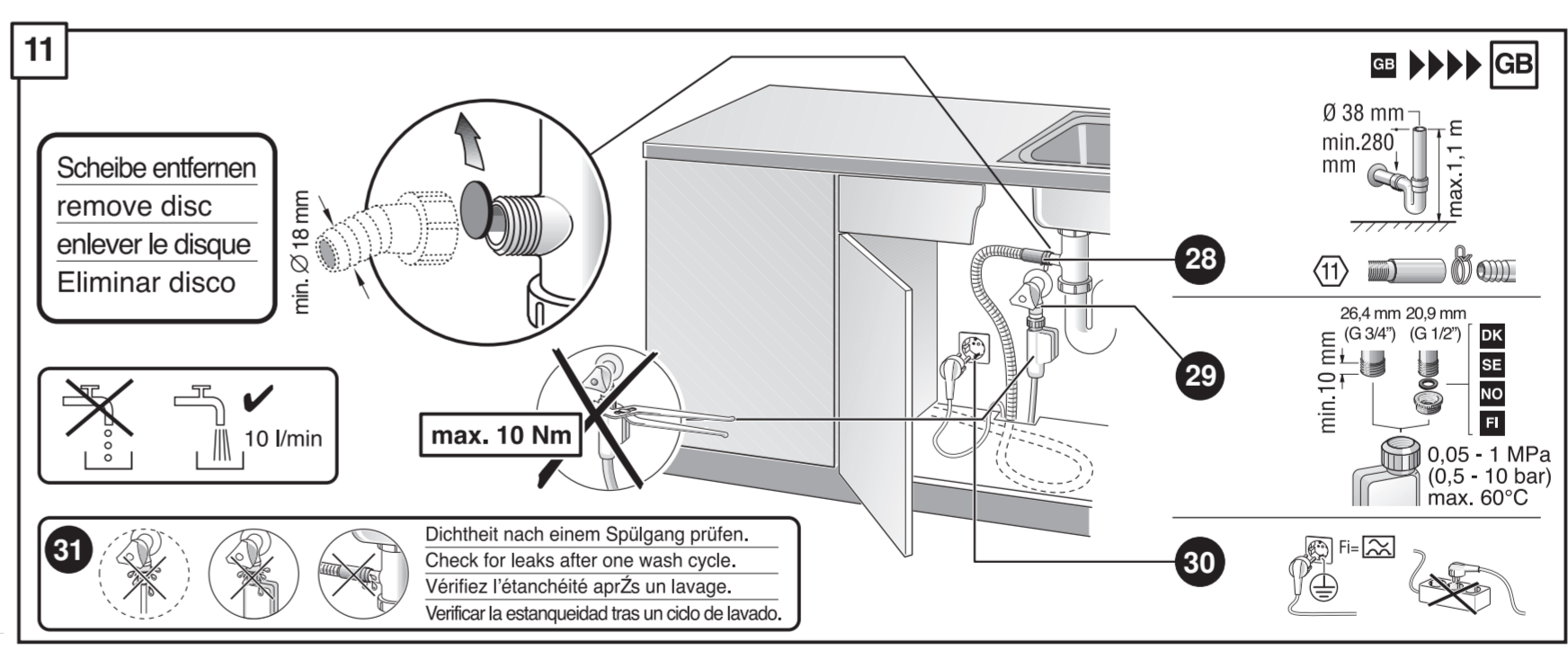
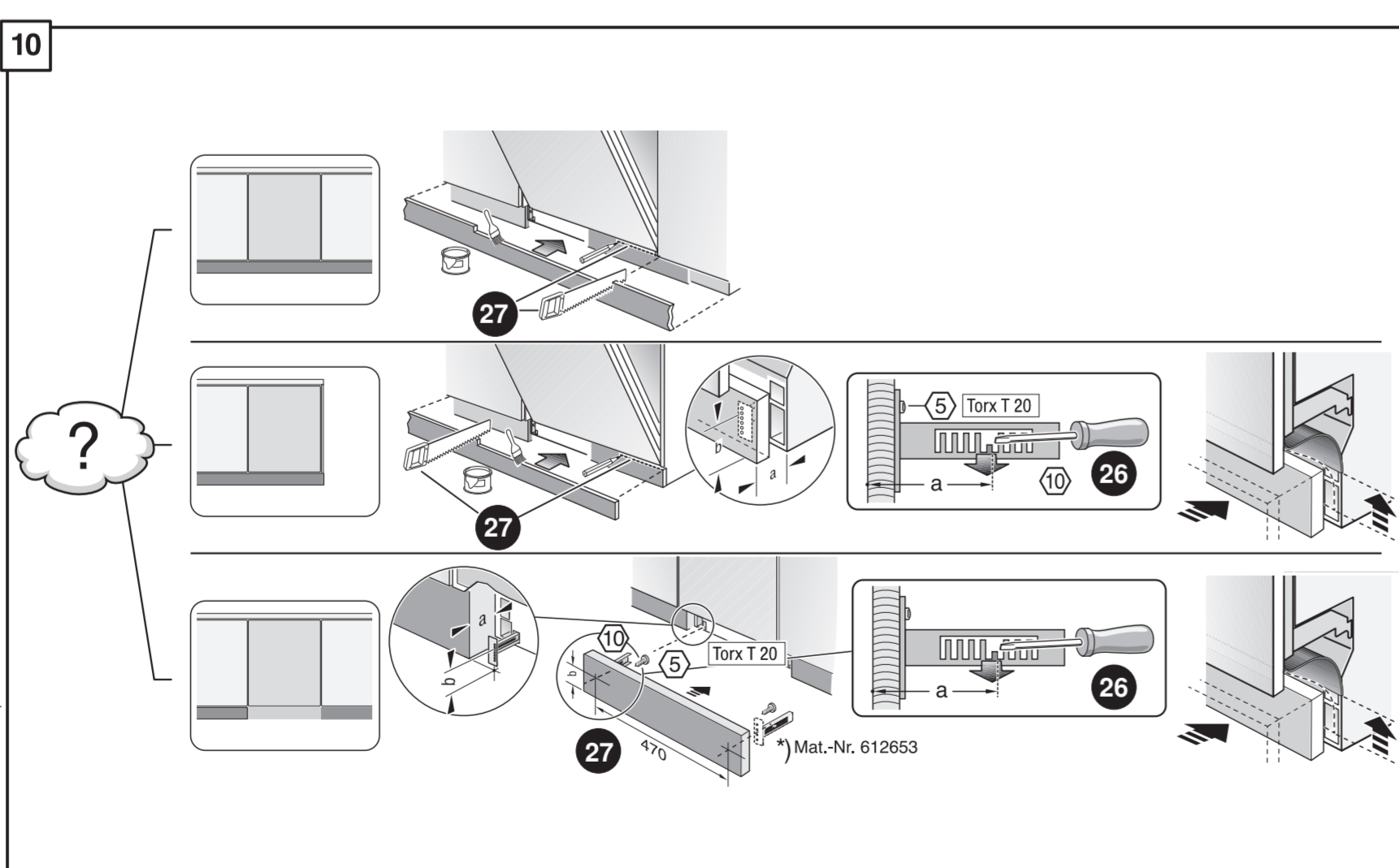
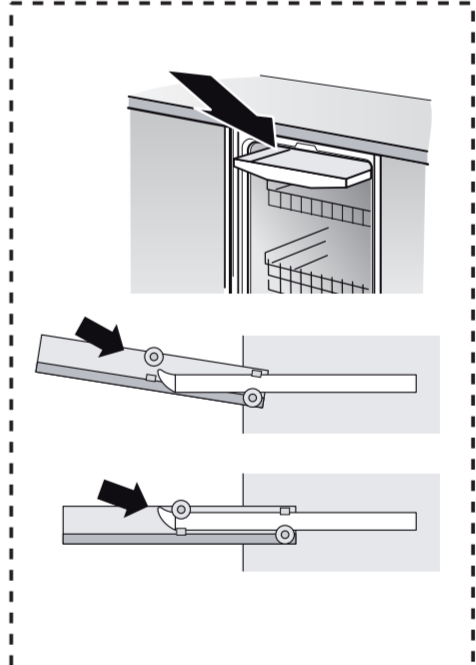
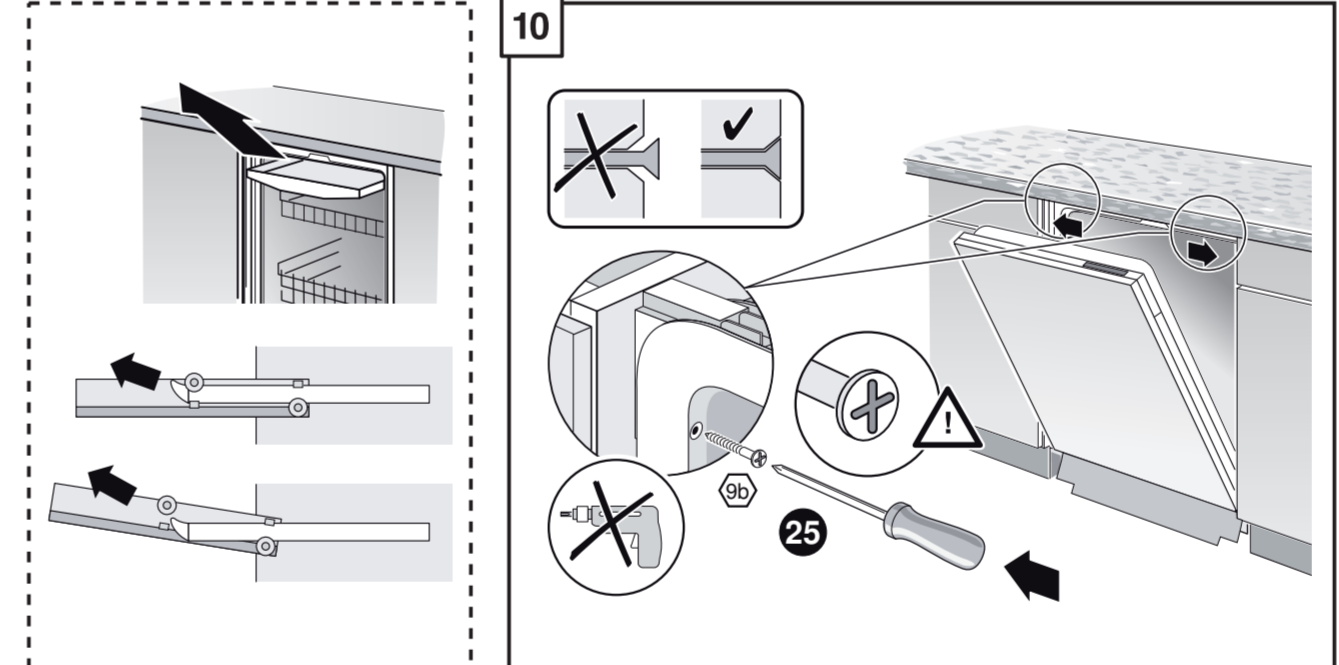
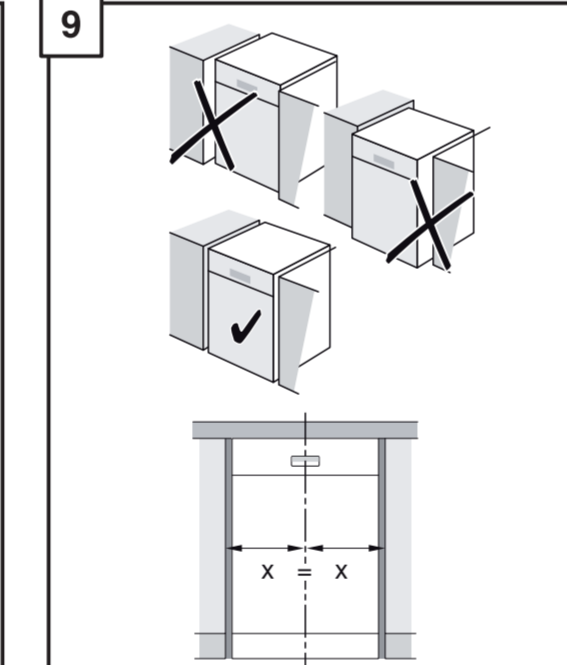
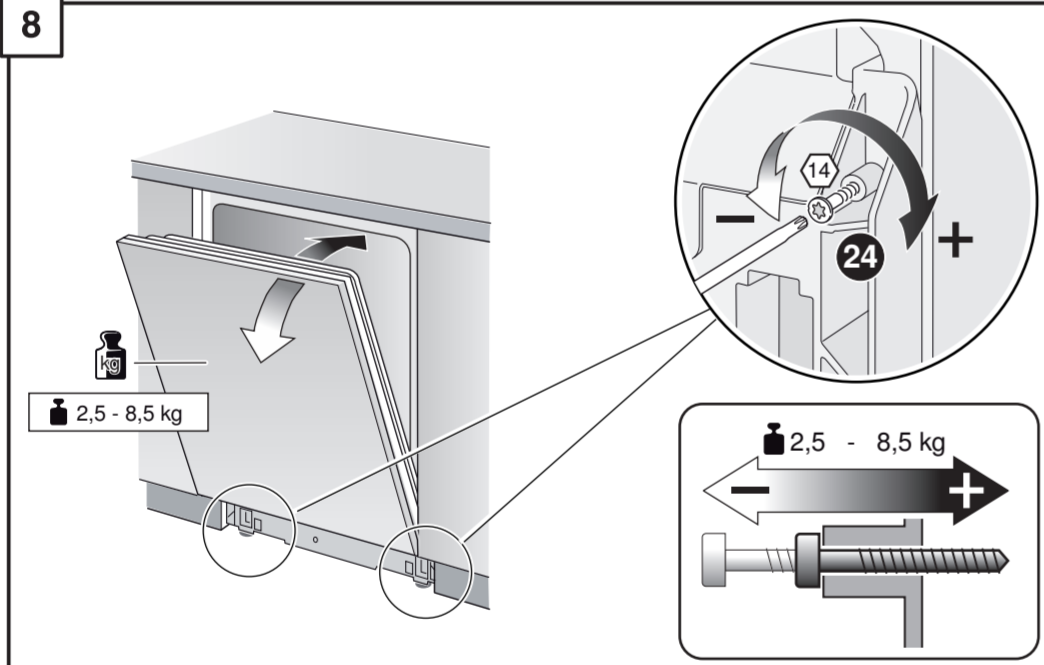
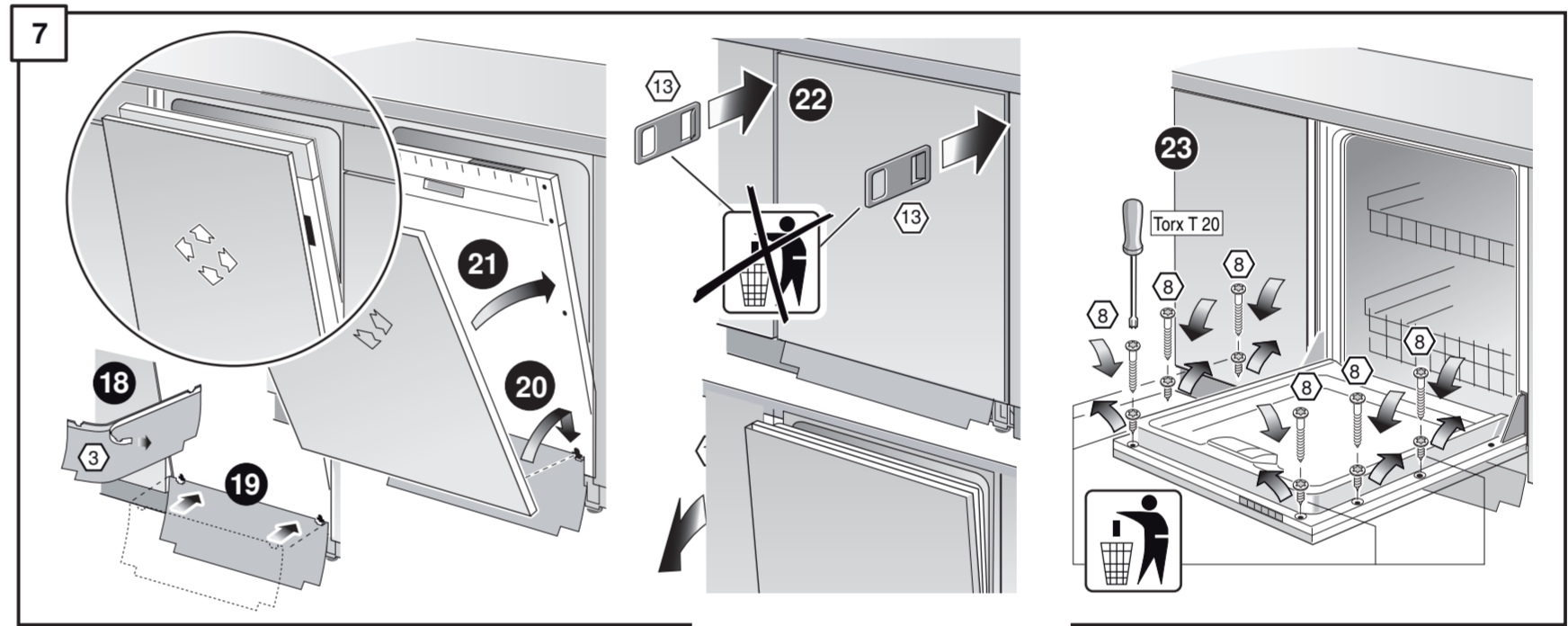
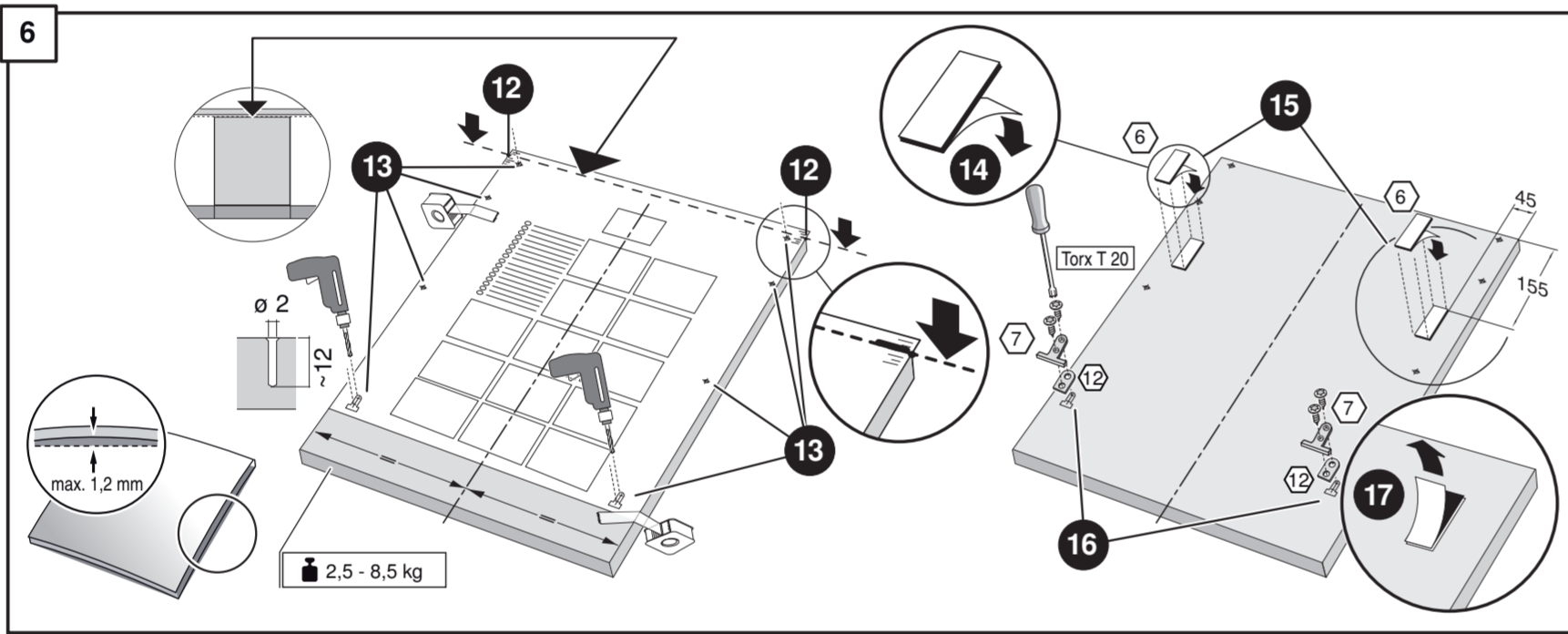
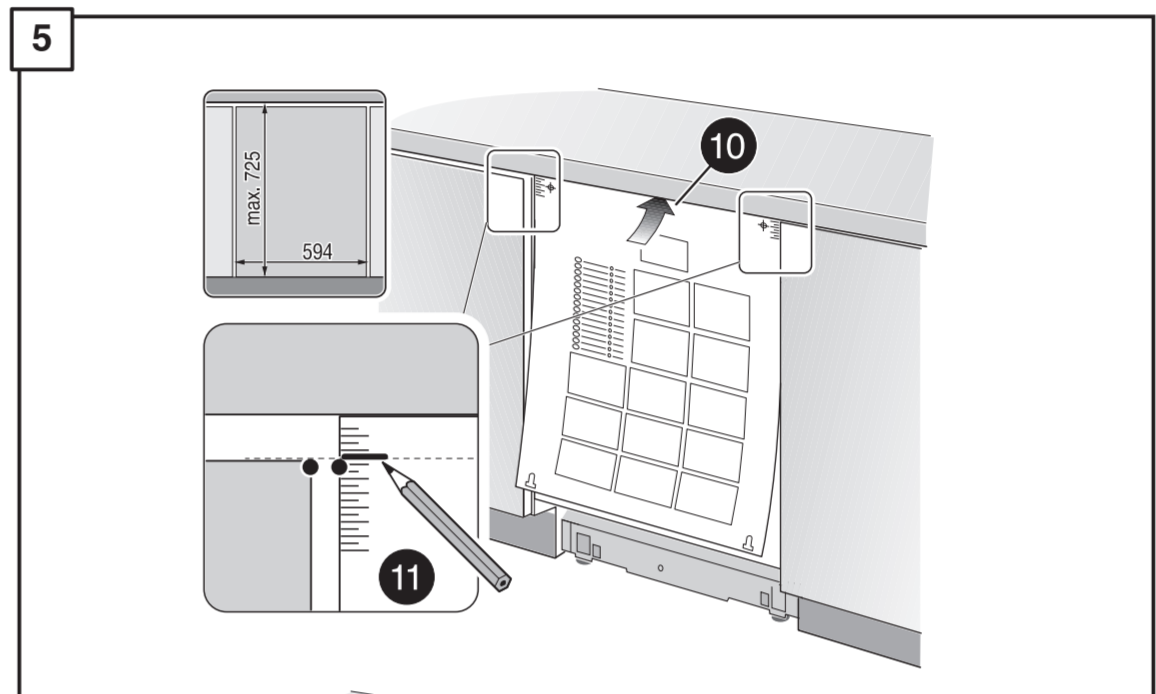
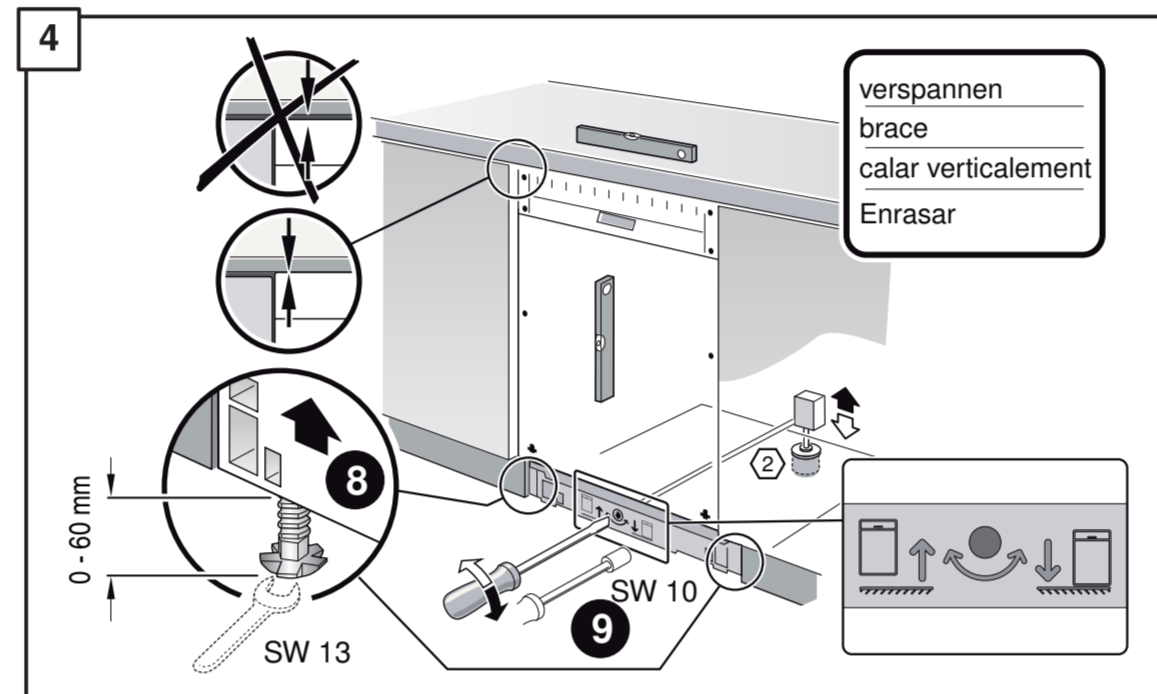
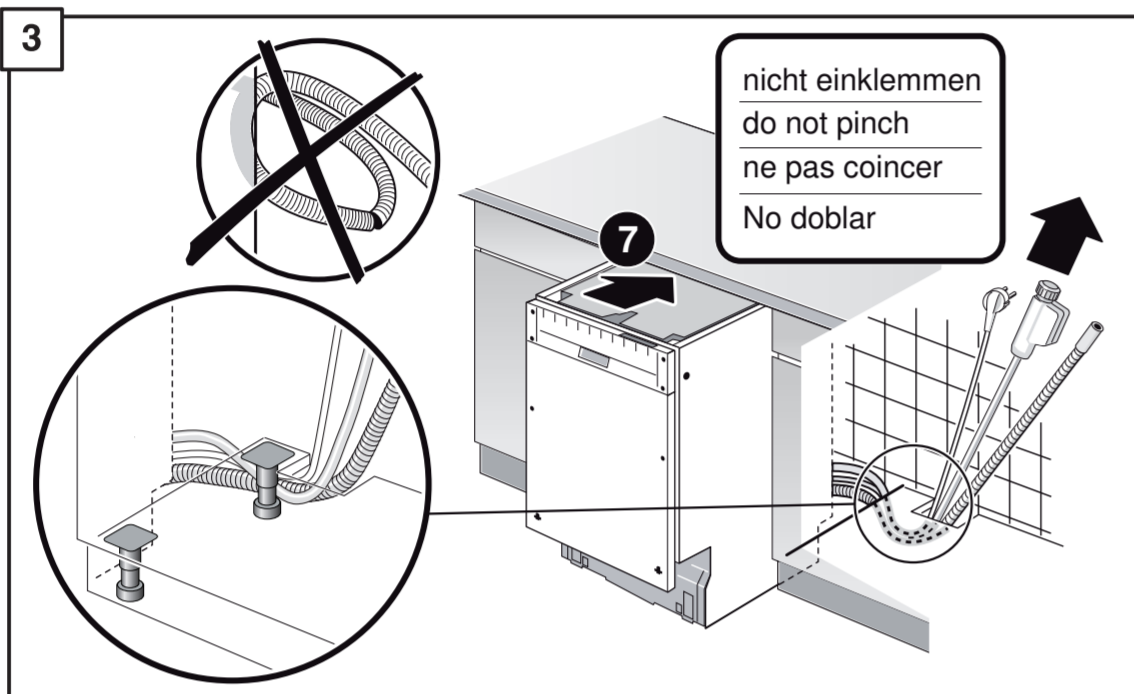
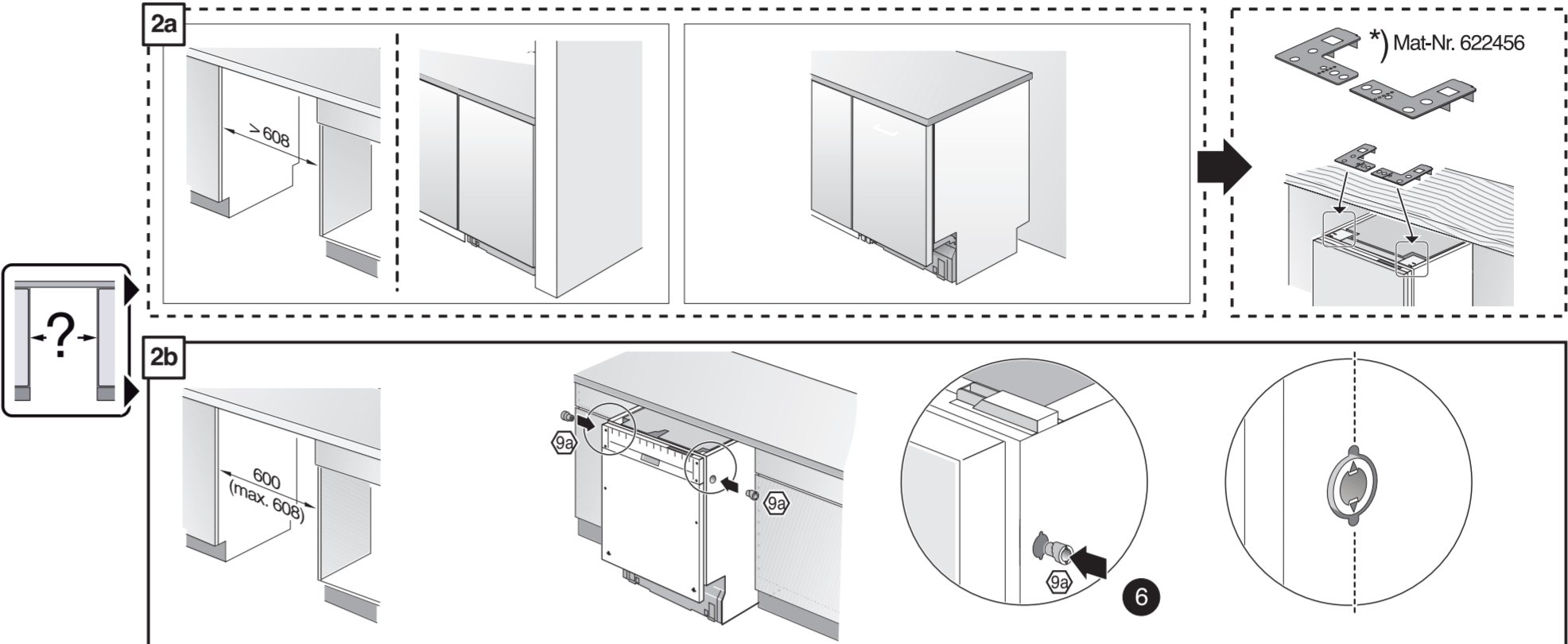
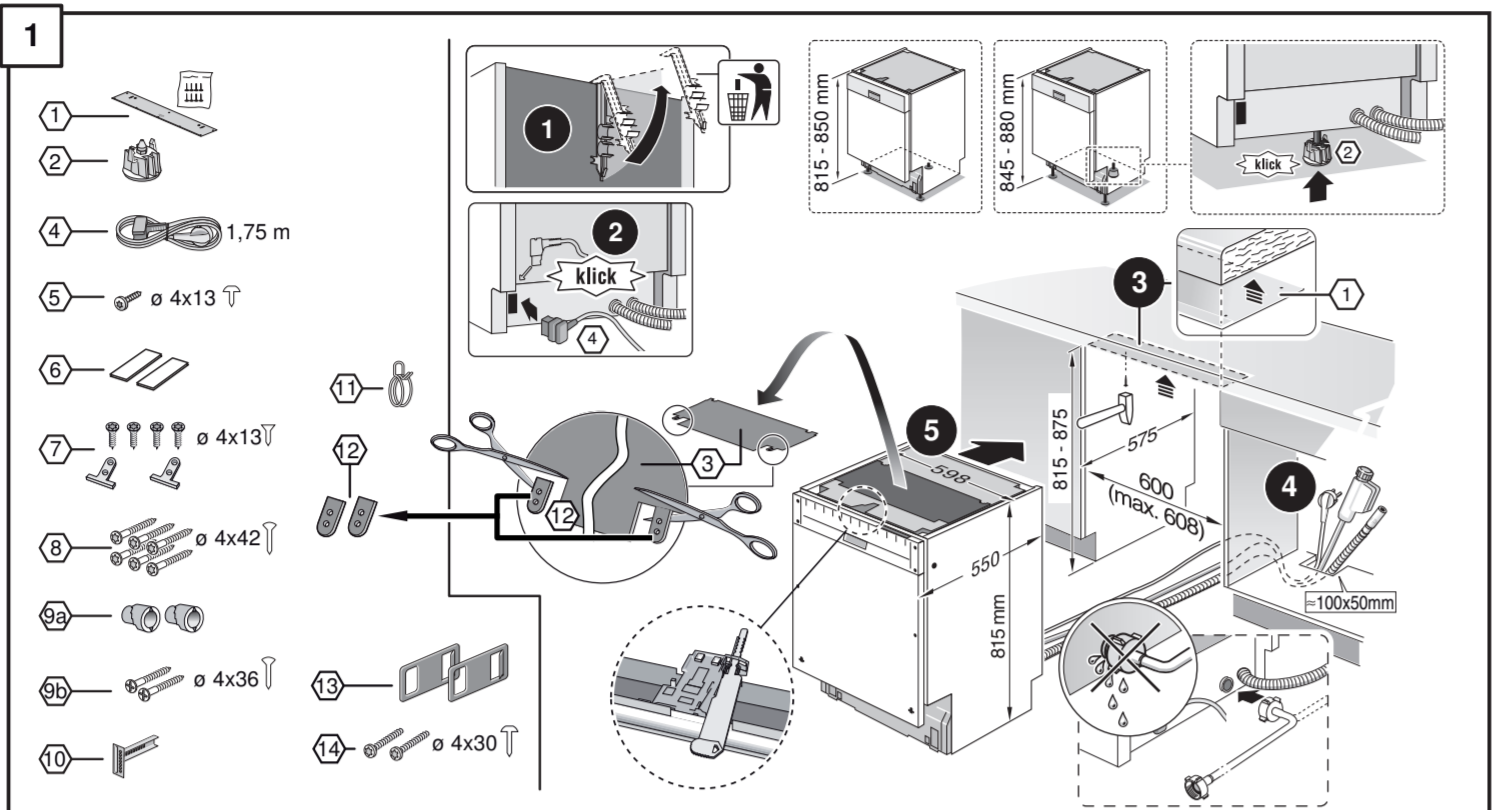
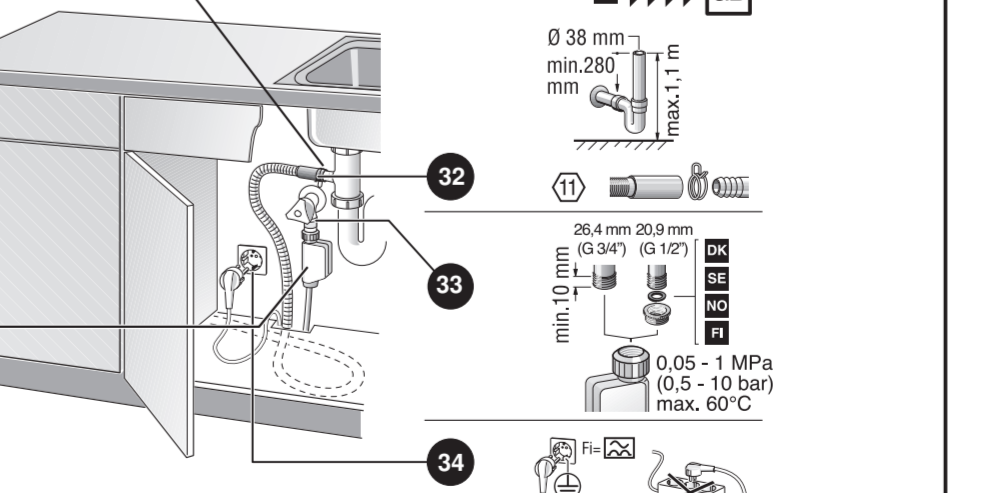
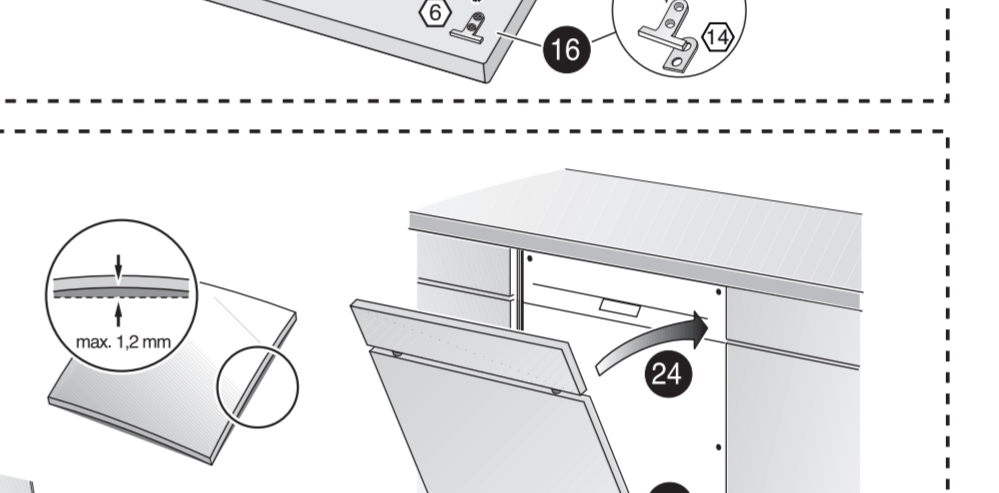
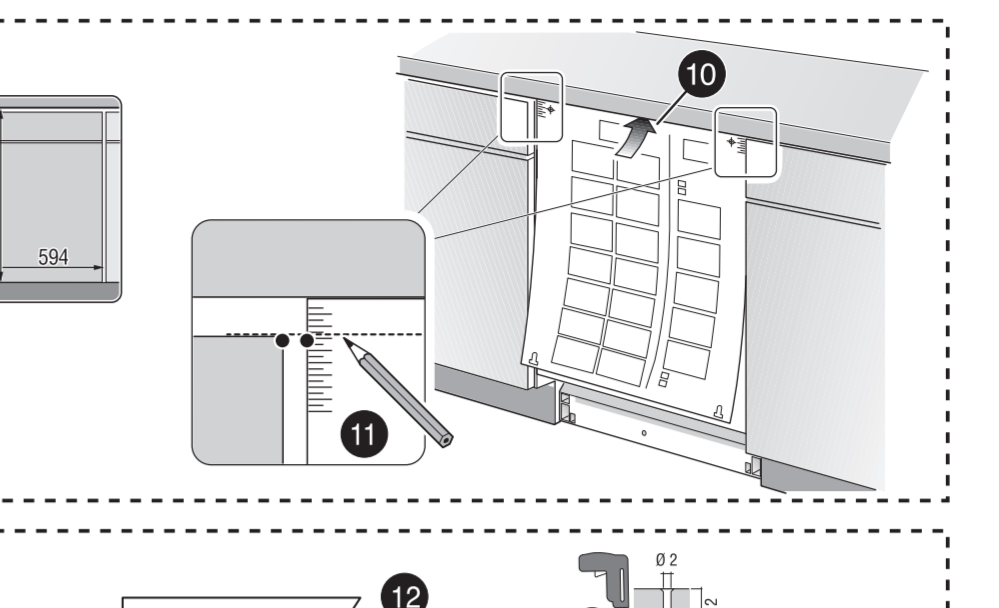
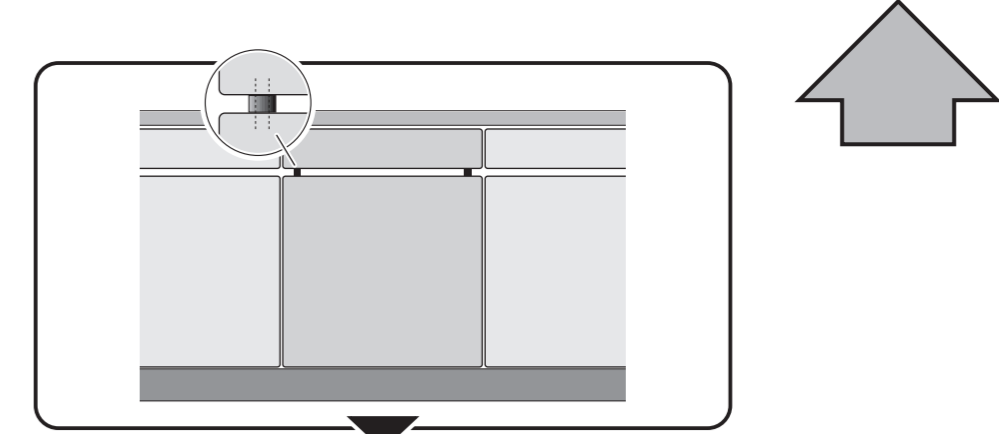
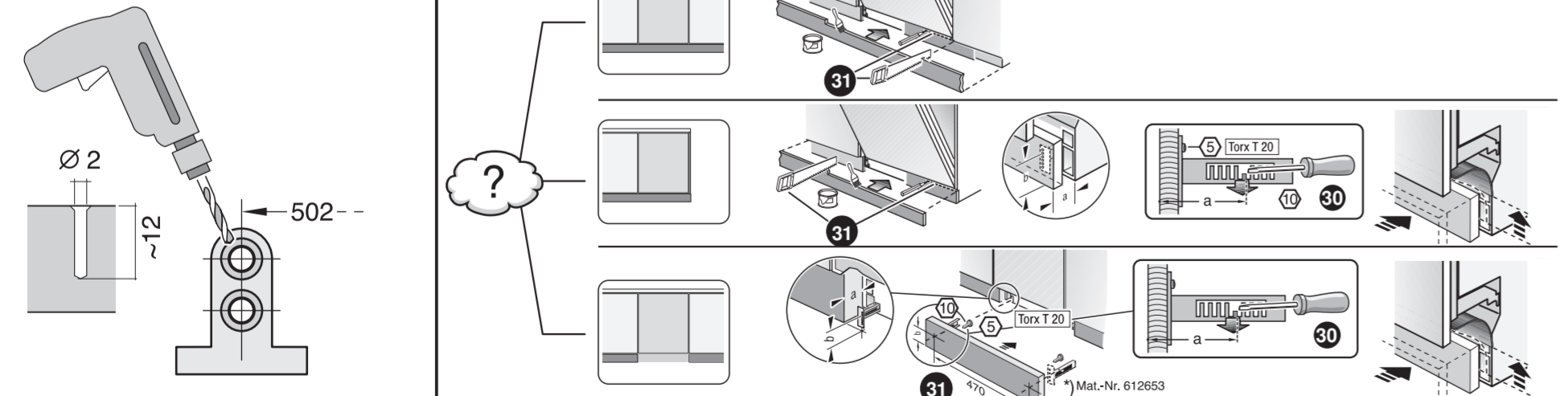
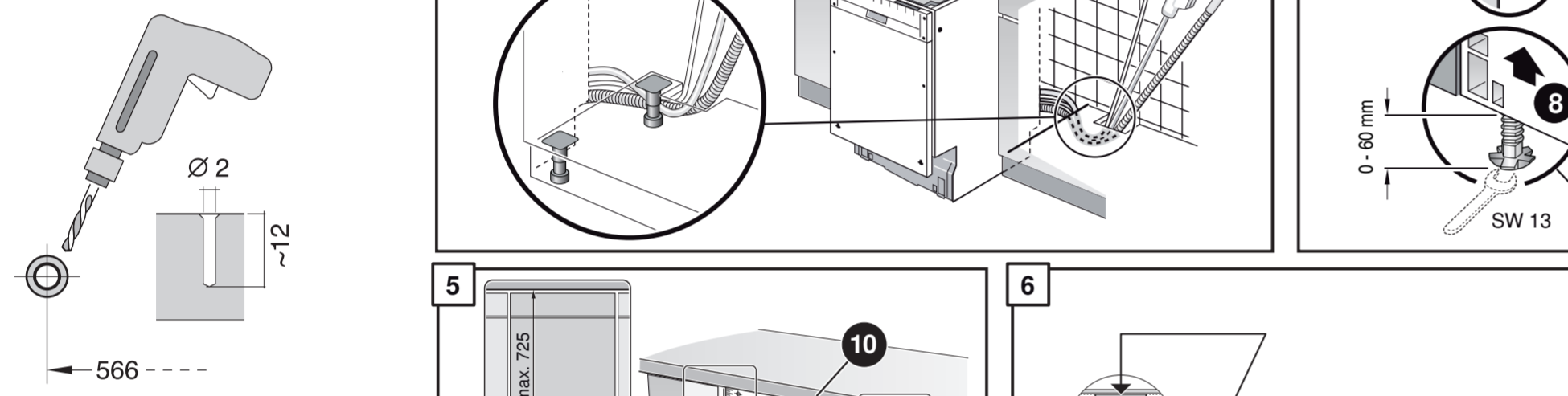
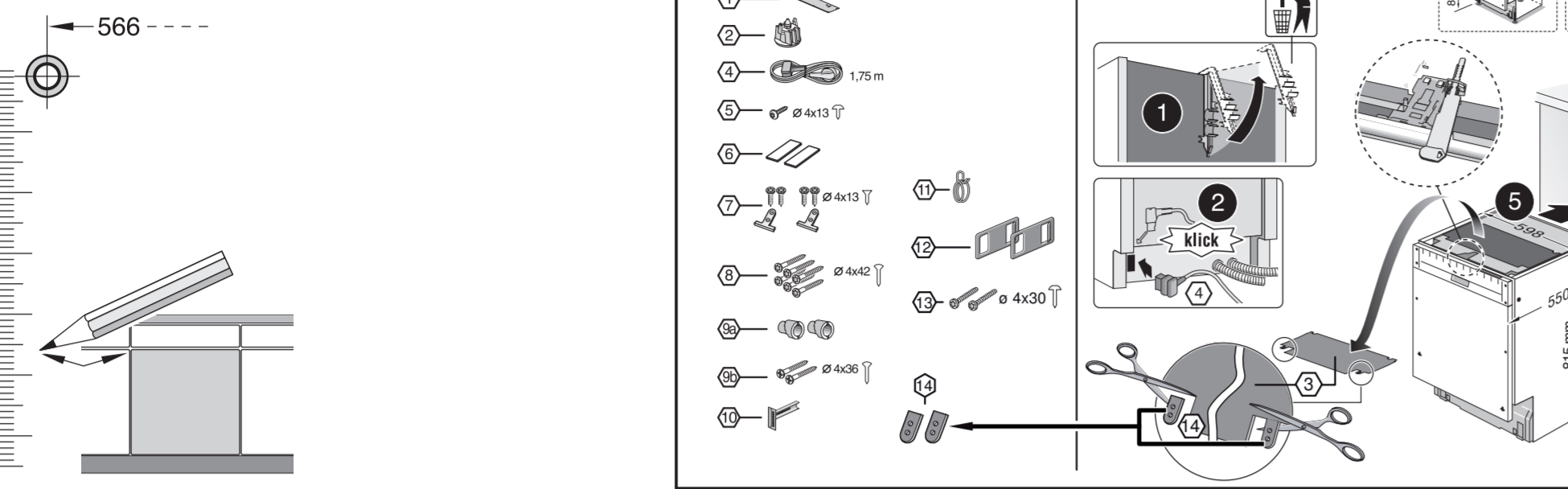
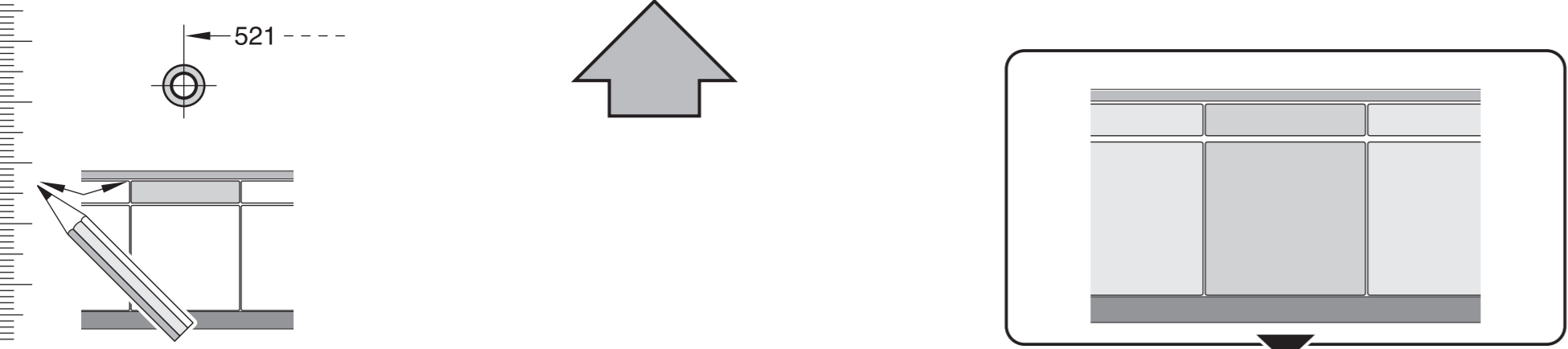
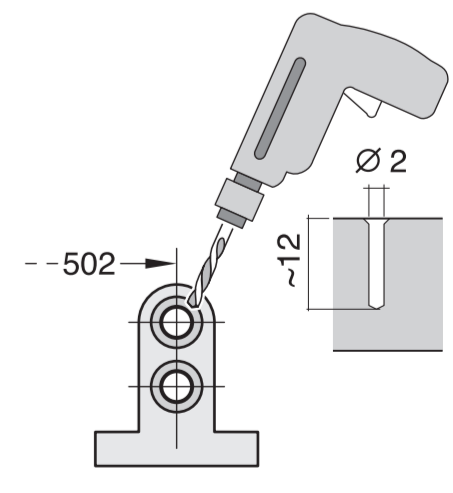
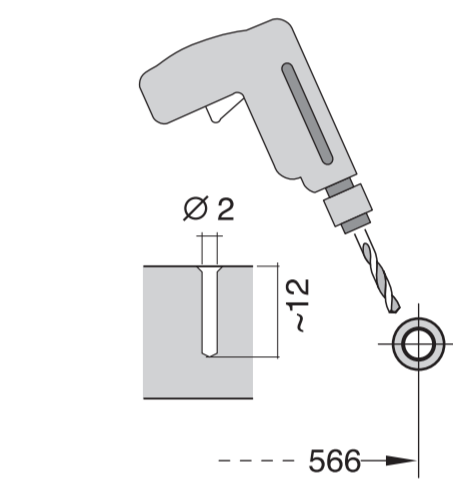
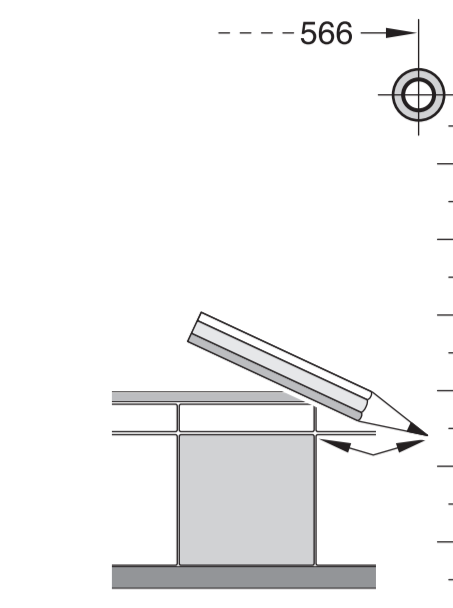
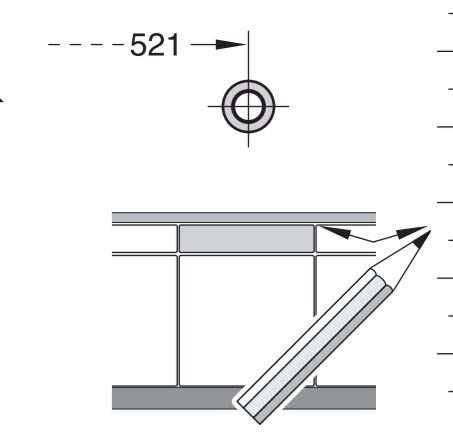
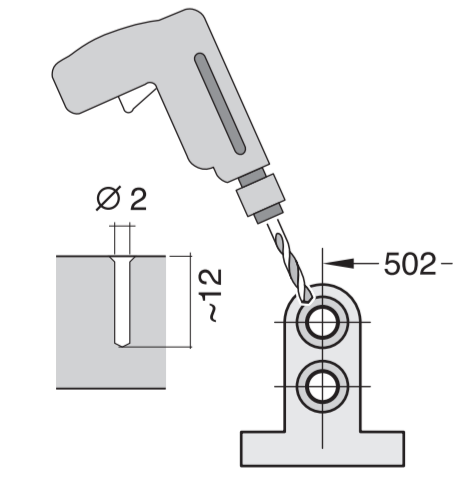
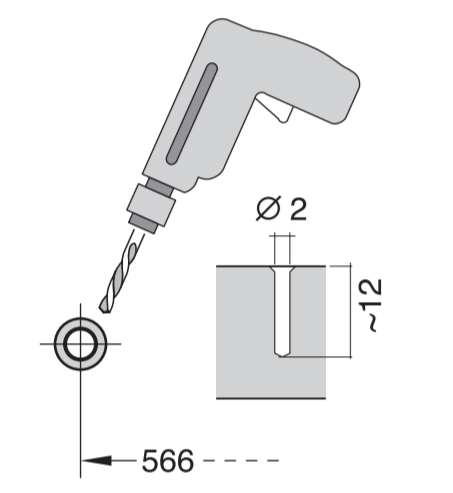
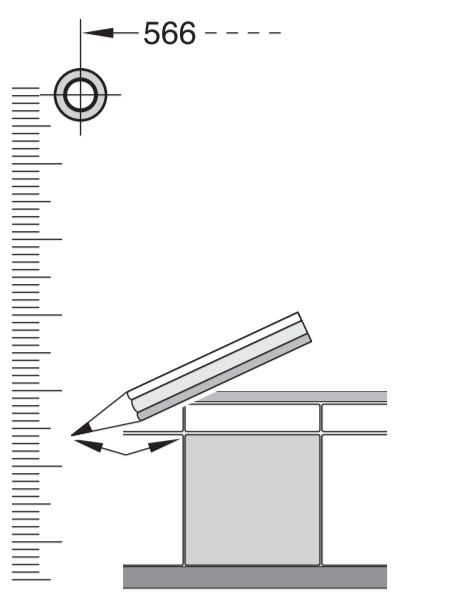
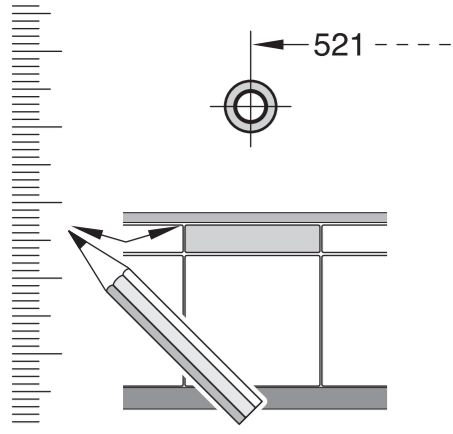


- | | | | |
|--|--|---|---|
| <p>de Montageanleitung
 *) über Kundendienst erhältlich
 es Instrucción de montaje
 *) Disponible por el servicio al cliente
 fr Notice de montage
 *) Disponible par le biais du service après-vente
 nl Montagevoorschrift
 *) Tegen meerprijs bij de Servicedienst verkrijgbaar
 it Istruzioni per il montaggio
 *) Disponibili presso il servizio assistenza clienti
 pl Instrukcja montażu
 *) Dostępna w punkcie serwisowym
 pt Instruções de montagem
 *) Pode ser adquirido nos nossos Serviços Técnicos
 sv Monteringsanvisning
 *) Kan fås via Service</p> | <p>tr Montaj kılavuzu
 *) Yetkili servis üzerinden alınabilir
 ru Инструкция по монтажу
 *) Можно получить в сервисном центре
 cs Montážní návod
 *) K dispozici přes servisní službu
 no Monteringsanvisning
 *) fåes hos kundeservice
 fi Asennusohje
 *) Saatavissa huoltopalvelusta
 da Monteringsvejledning
 *) Kan købes hos serviceafdelingen
 pl Instrukcja montażu
 *) Do uzyskania w punkcie serwisowym
 hu Szerelési utasítás
 *) A vévőszolgálaton keresztül kapható:
 lv Uputa za montažu
 *) var drobtīt kod servīse uzdevā</p> | <p>mk Упатство за монтажа
 *) се добива преку службата за купувачи
 sl Navodilo za montažo
 *) lahko nabavite v servisni službi
 sk Uputstvo za montažu
 *) Može se nabaviti preko servisne službe
 et Monteerimisjuhend
 *) küsige klientteenindusest
 lt Montavimo instrukcija
 *) ją galima gauti klientų aptarnavimo servise
 lv Montāžas pamācība
 *) Var saņemt servisa dienestā
 sk Návod na montáž
 *) Dostanete v službe zákazníkom
 cs Udhæuzes pŕ montim
 *) Sigurohet nŕpŕemjet servisit
 bs Uputa za montažu
 *) Može se dobiti preko servisne službe</p> | <p>fa راهنمای مونتاژ
 *) از مرکز خدمات پس از فروش تهیه فرمایید
 ar تعليمات التركيب
 *) يمكن طلبها من مراكز خدمة العملاء
 ko 설치 설명서
 *) 고객센터 센터에서 구입 가능
 zh 安装说明书
 *) 可向售后服务站索取。
 uk Інструкція з монтажу
 *) Можна отримати через сервісну службу
 ru Инструкция по монтажу
 *) obtainabili la serviciul pentru clienti
 id Instruksi Pemasangan
 *) bisa didapatkan melalui Customer Service
 kk Іске қосу туралы нұсқаулар!
 *) Сервис қызметі көрсету орталығында алуға жағдай</p> |
|--|--|---|---|

GY 640 Voll-I - 81,5 cm - m. GS - Zeolith 9001 050 243 (9410)





1

1
2
3
4 Ø 4x13
5
6
7 Ø 4x13
8
9
10
11
12
13 Ø 4x30
14
15

815 mm
575 mm
500 (max. 606) mm
100-50 mm

Klick

Mat-Nr. 622456

2a

2b

600 (max. 606)

3

nicht einklemmen
do not pinch
ne pas coincer
No doblar

4

verspannen
brace
calar verticalment
Enrasar

0-60 mm
SW 13

5

max. 725
594

6

Ø 2
~12

7

2.8 - 8.5 kg
Torx T 20

8

2.5 - 8.5 kg

9

10

10

10

502
~12
Mat-Nr. 612653

11

Scheibe entfernen
remove disc
enlever le disque
Eliminar disco

min. Ø 18 mm
max. 10 Nm

0.05 - 1 MPa (0.5 - 10 bar)
max. 60°C

1
4
5A
6A
7A
8

11

max. 4 m
2 m
0.22 mm
Mat-Nr. 350564

3 m EU *) Mat.-Nr. 644533
3 m GB *) Mat.-Nr. 644534

Mat.-Nr. 657927