

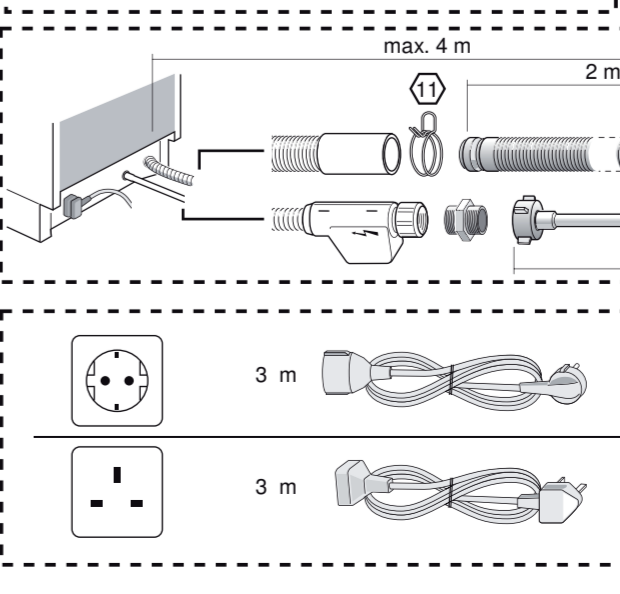
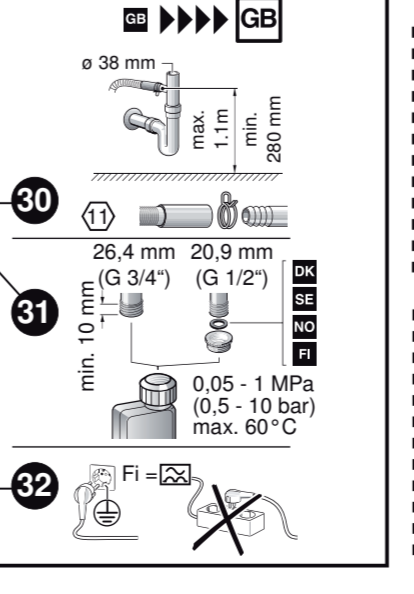
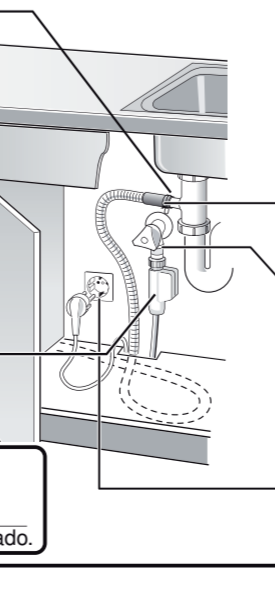
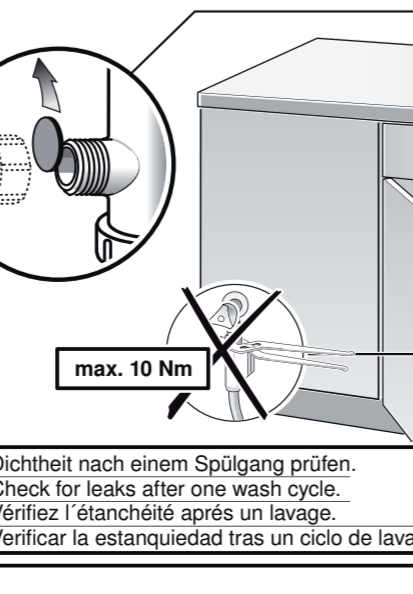
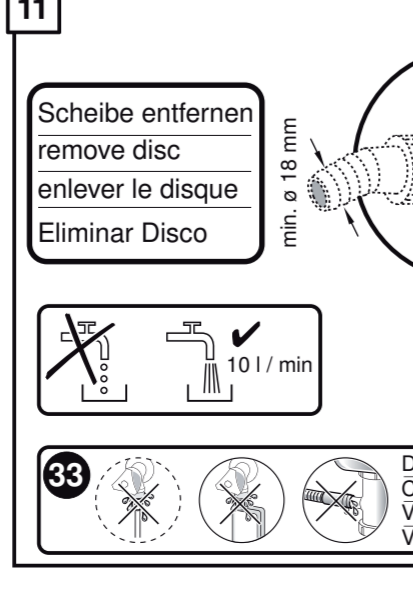
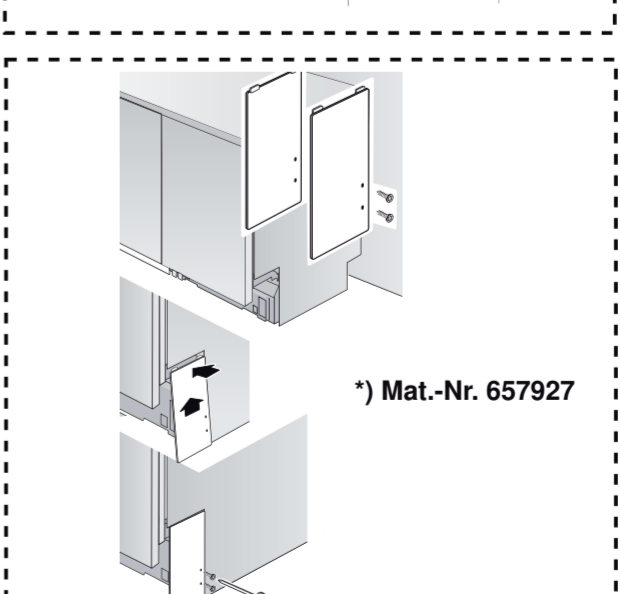
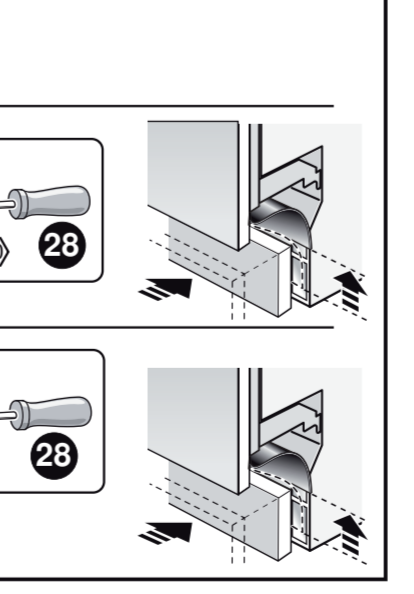
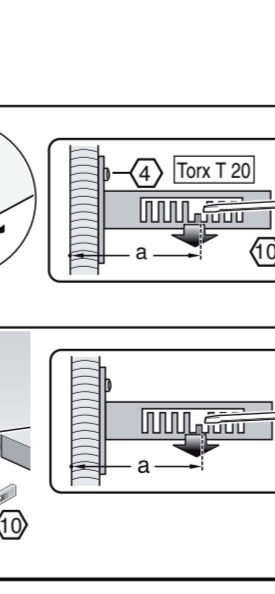
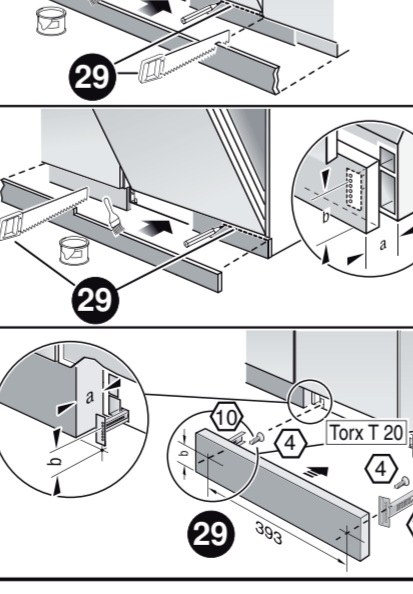
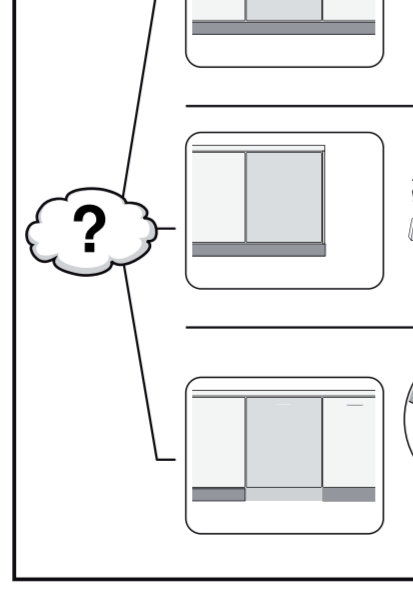
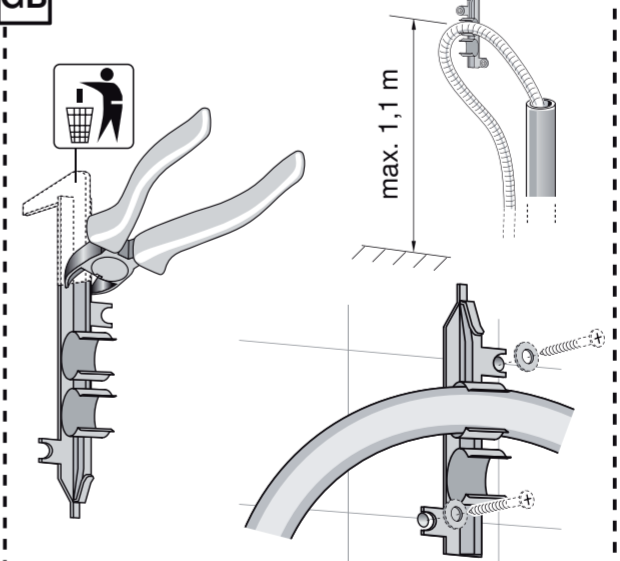
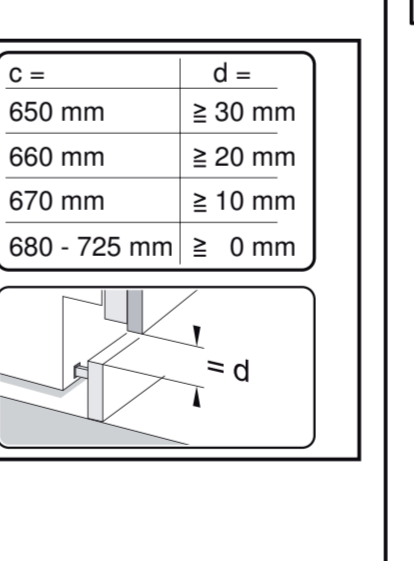
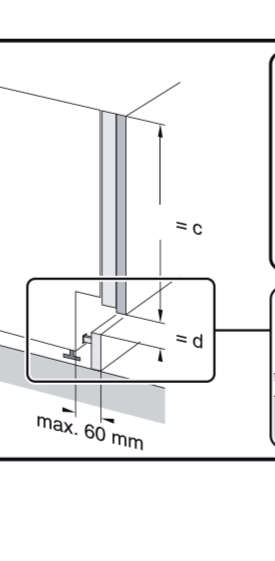
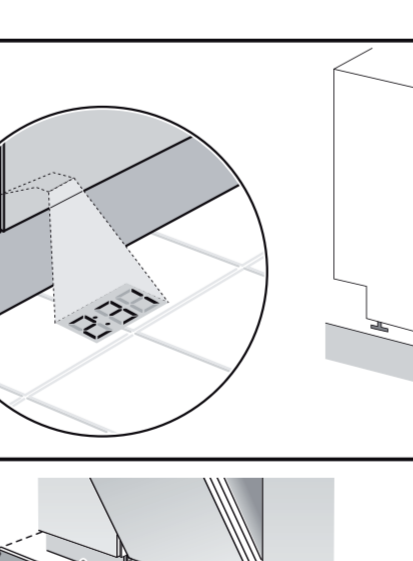
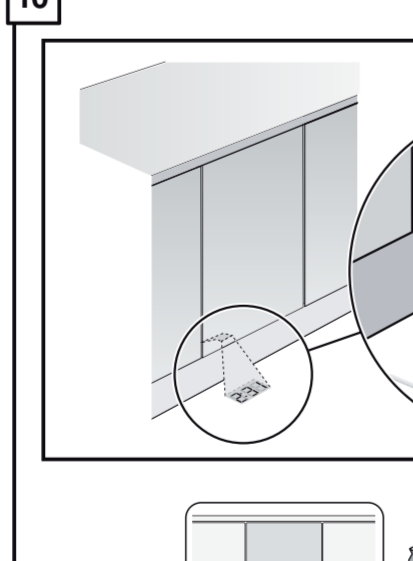
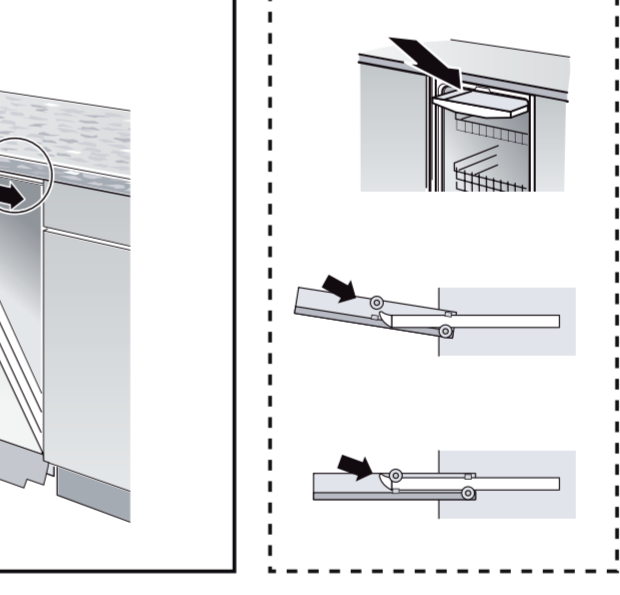
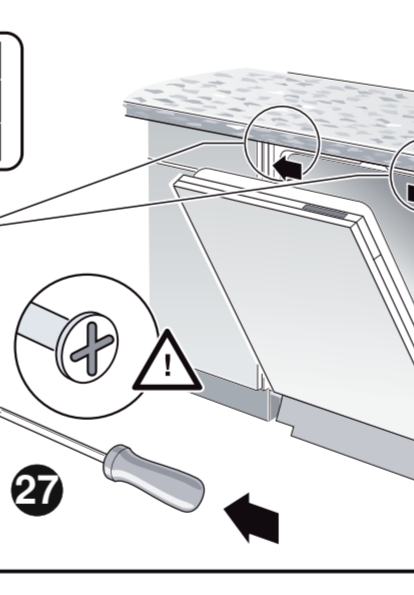
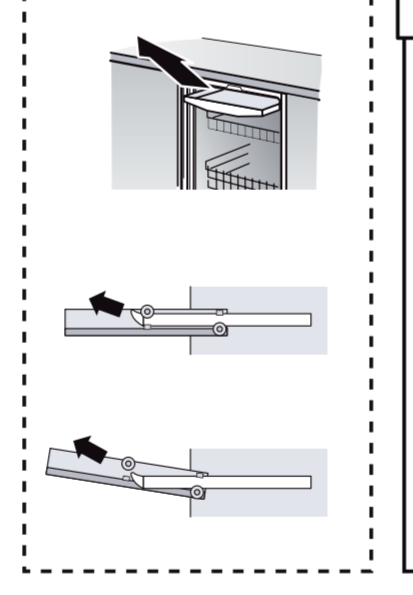
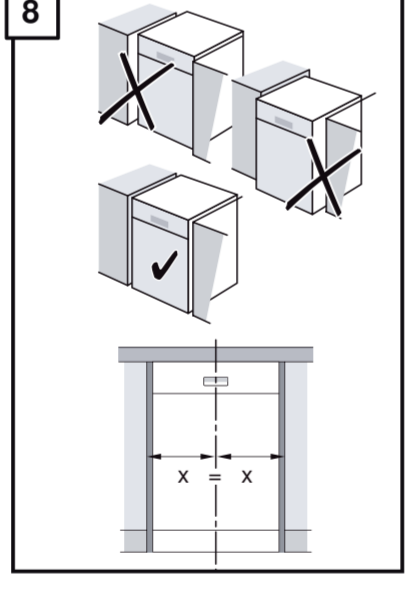
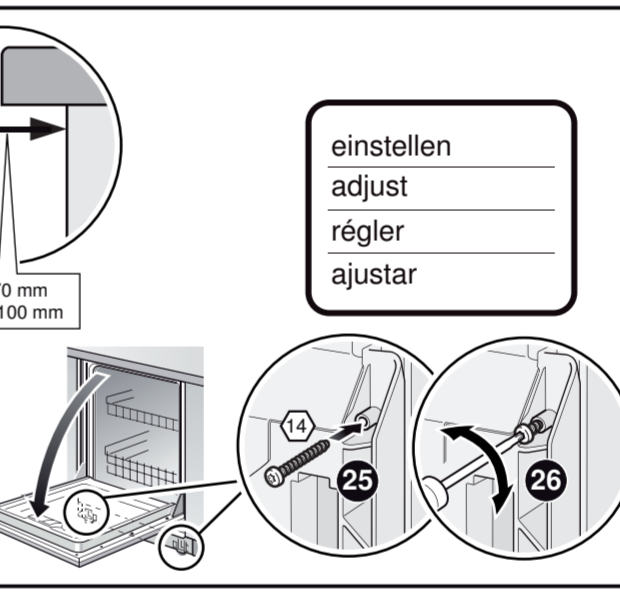
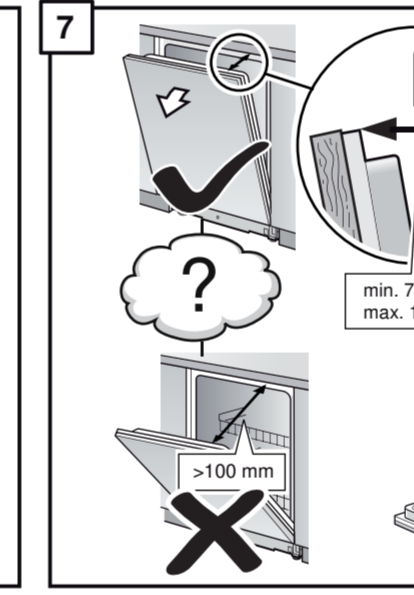
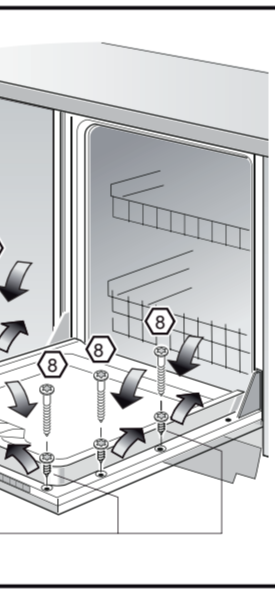
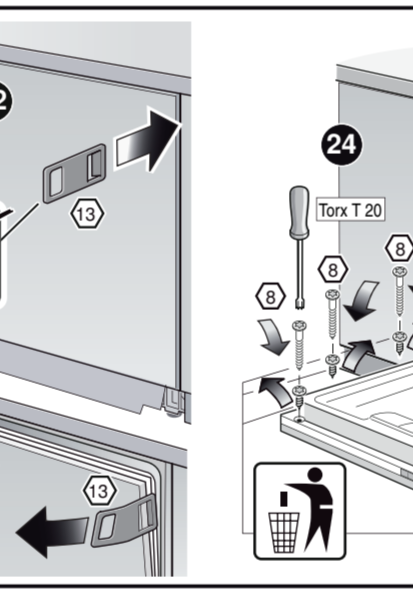
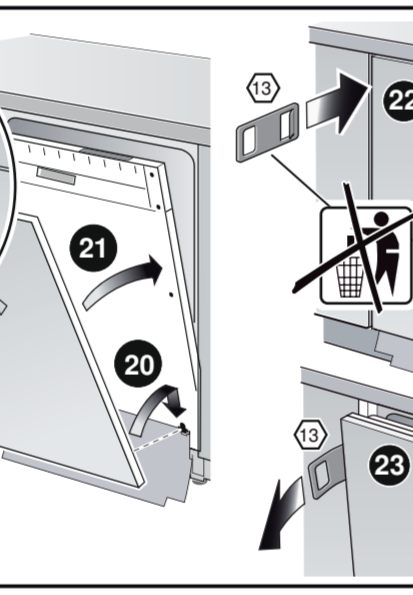
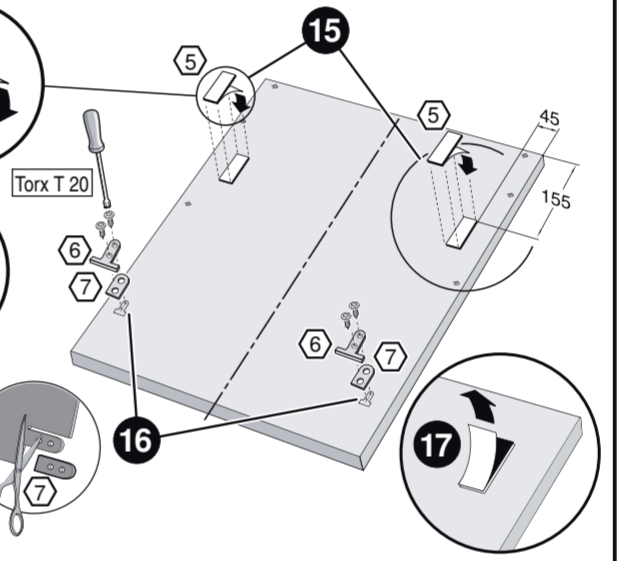
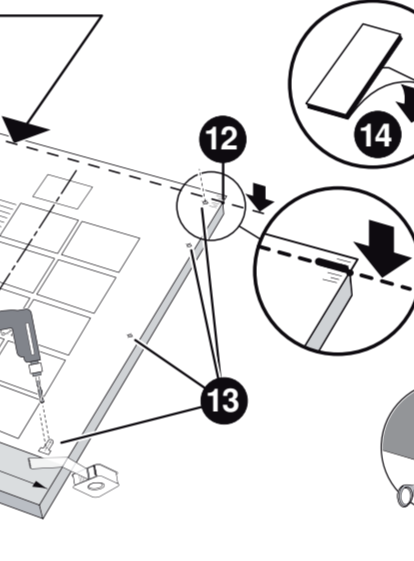
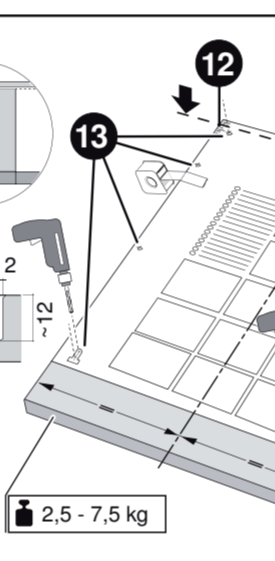
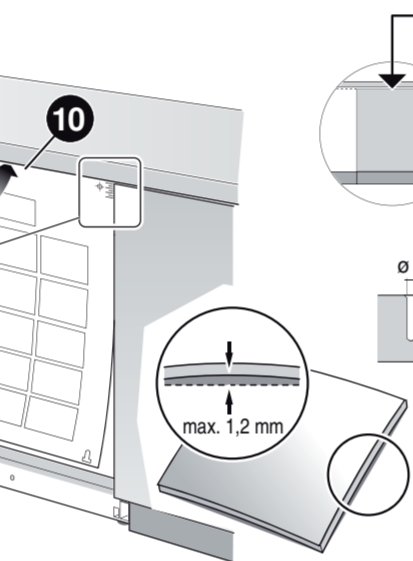
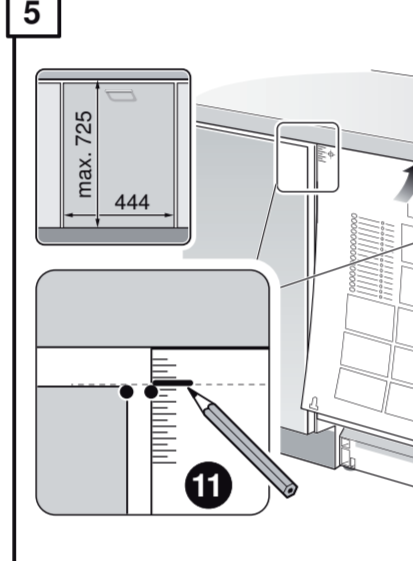
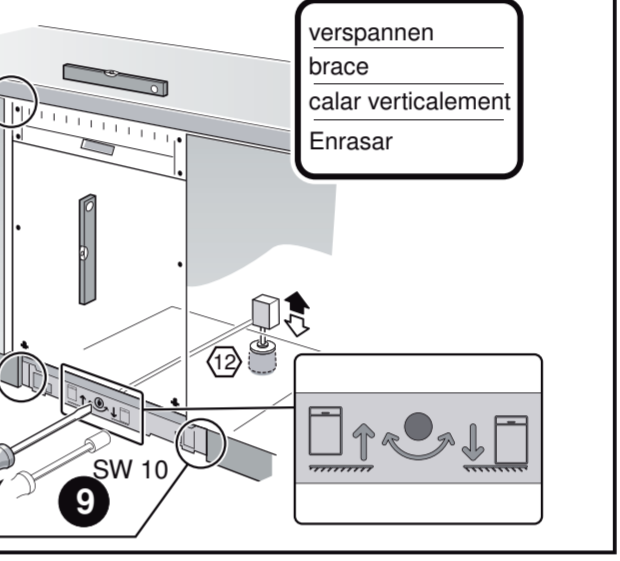
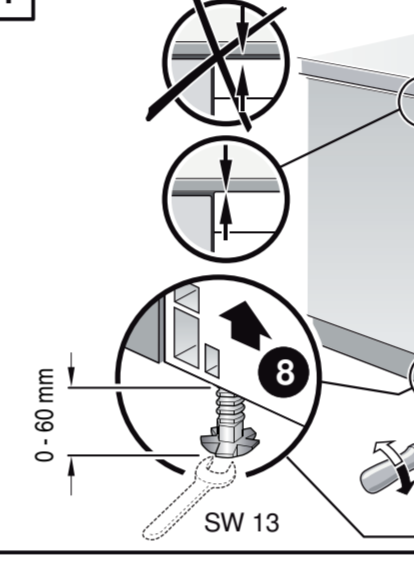
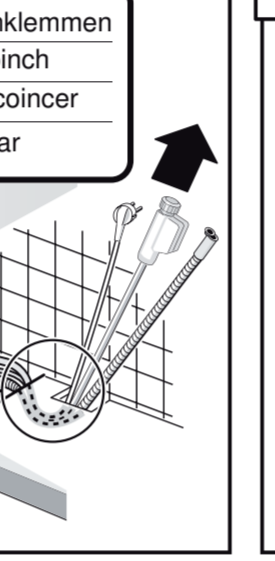
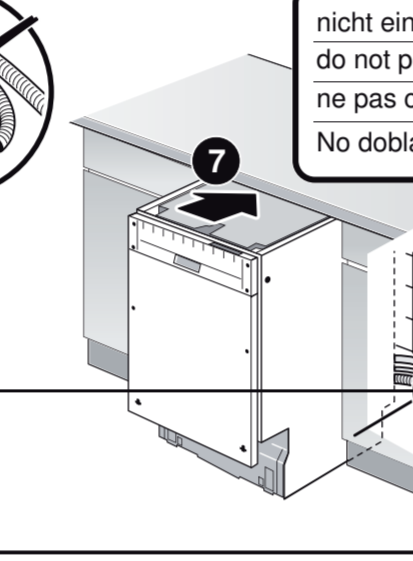
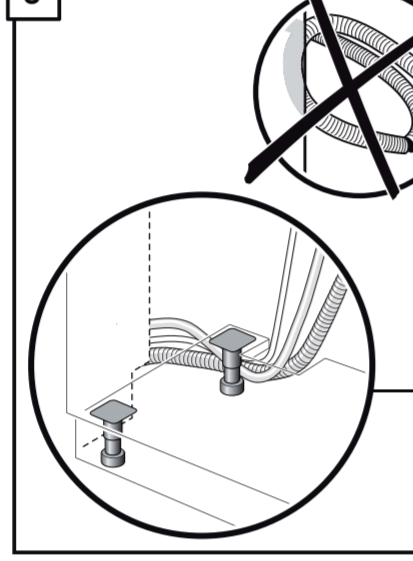
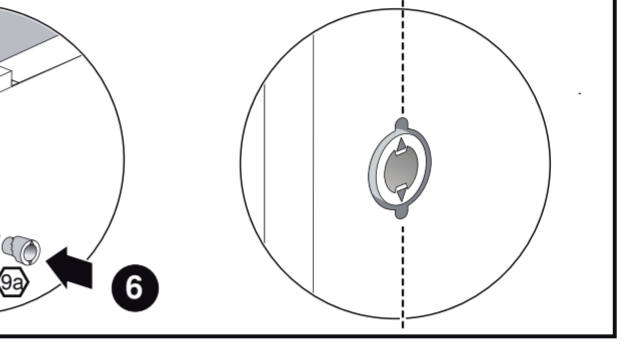
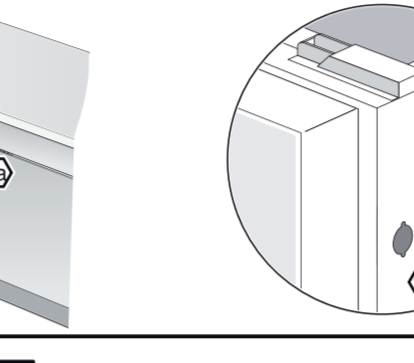
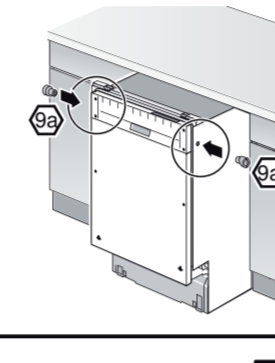
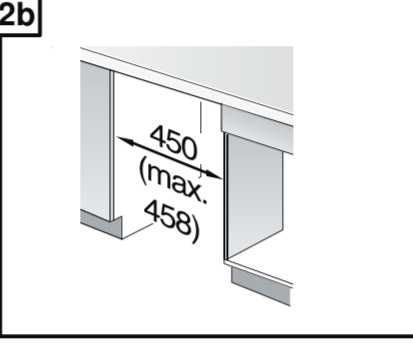
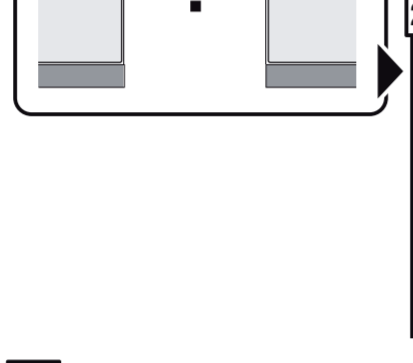
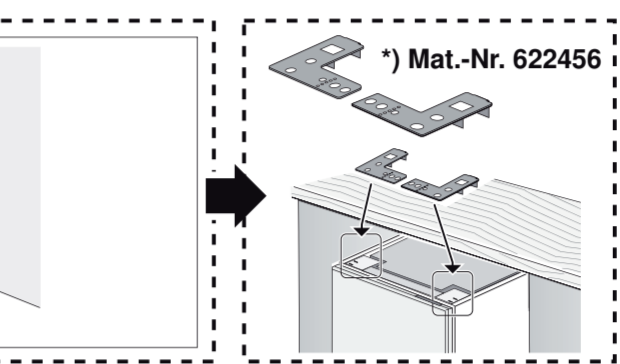
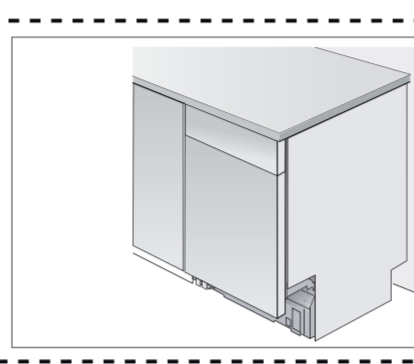
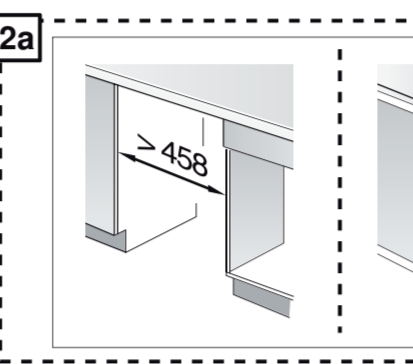
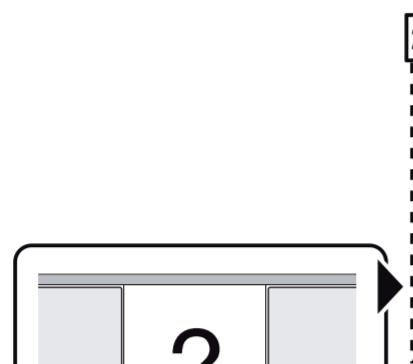
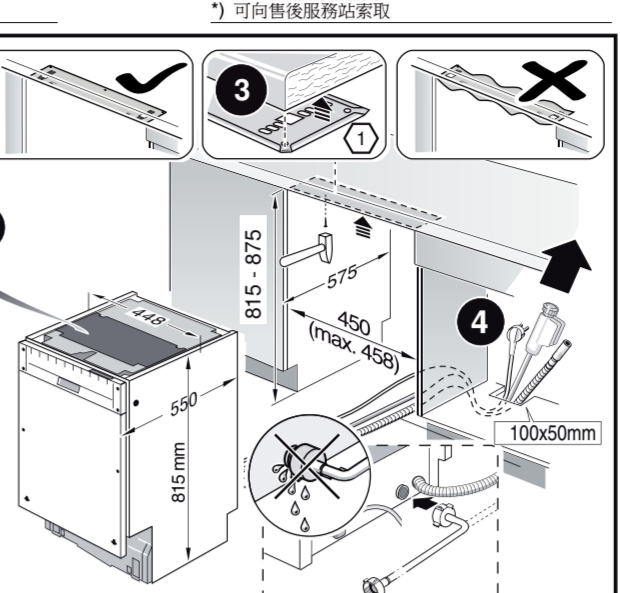
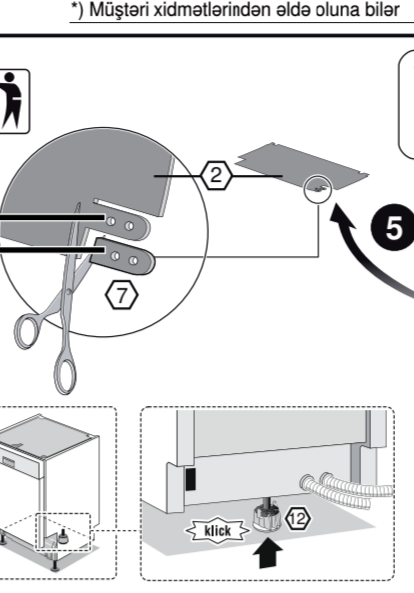
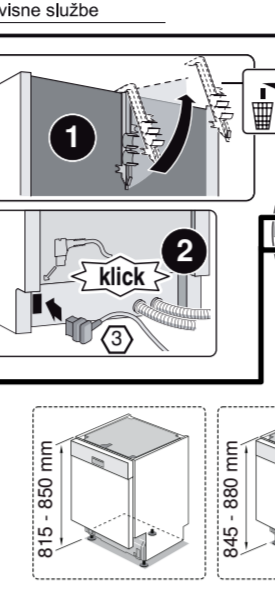
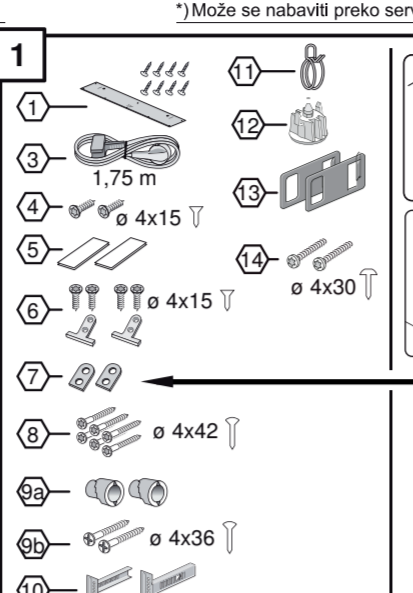
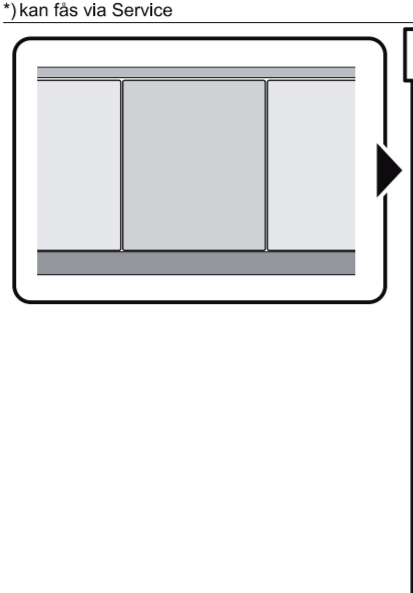
GV 440 Voll-I - mit GS - Zeolith 9001 170 399 (9801)

- de** Montageanleitung
en über Kundendienst erhältlich
fr Installation Instructions
it Available from customer service
nl Notice de montage
pl Instrukcja montażu
pt Instruções de montagem
ru Инструкция по монтажу
sk Návod na montáž
sv Monteringsanvisning
zh 安裝說明書

- no** Monteringsanvisning
pl Instrukcja montażu
pt Instruções de montagem
ru Инструкция по монтажу
sk Návod na montáž
sv Monteringsanvisning
zh 安裝說明書

- nl** Navodilo za montažo
pl Instrukcja montażu
pt Instruções de montagem
ru Инструкция по монтажу
sk Návod na montáž
sv Monteringsanvisning
zh 安裝說明書

- tr** O montaj talimatları
uk Інструкція з монтажу
vi Hướng dẫn lắp đặt
zh 安裝說明書



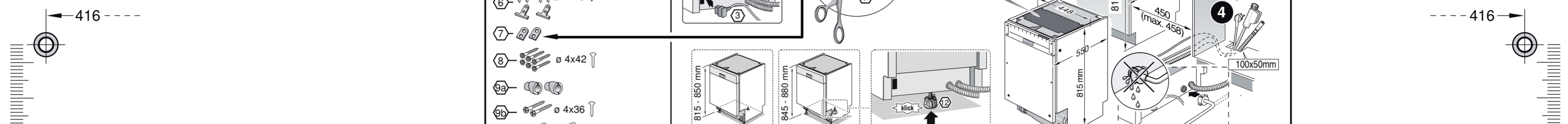
Scheibe entfernen
 enlever le disque
 Eliminar Disco

Dichtheit nach einem Spülgang prüfen.
 Check for leaks after one wash cycle.
 Vérifier l'étanchéité après un lavage.
 Verificar la estanqueidad tras un ciclo de lavado.

max. 10 Nm

0,05 - 1 MPa
 (0,5 - 10 bar)
 max. 60°C

*) Mat.-Nr. 350564
 *) Mat.-Nr. 644533
 *) Mat.-Nr. 644534



1

- 1 1.75 m
- 2 4x15
- 3 4x42
- 4 4x30
- 5 4x42
- 6 4x15
- 7 4x30
- 8 4x42
- 9 4x36
- 10 4x36

2a

2b

3

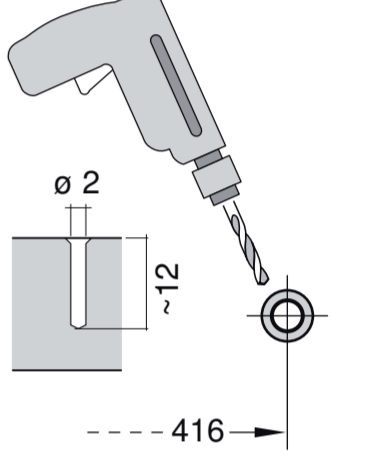
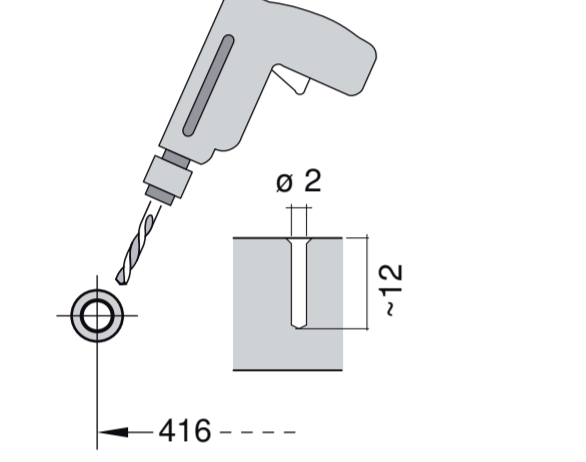
nicht einklemmen
do not pinch
ne pas coincier
No doblar

4

verspannen
brace
calar verticalment
Enrasar

5

6



7

8

einstellen
adjust
régler
ajustar

min. 70 mm
max. 100 mm

>100 mm

9

10

| | |
|--------------|---------|
| c = | d = |
| 650 mm | ≥ 30 mm |
| 660 mm | ≥ 20 mm |
| 670 mm | ≥ 10 mm |
| 680 - 725 mm | ≥ 0 mm |

11

Scheibe entfernen
remove disc
enlever le disque
Eliminar Disco

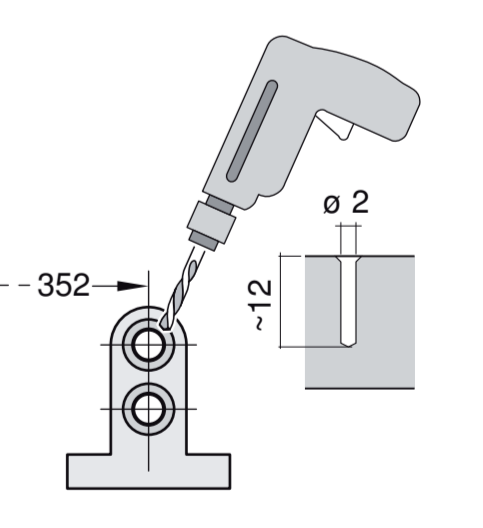
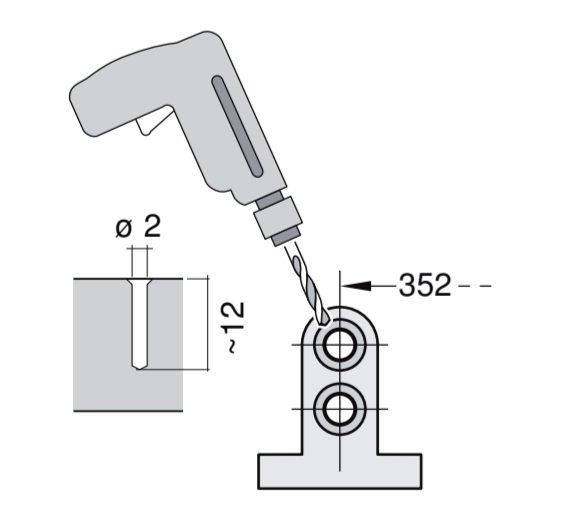
min. ø 19 mm

max. 10 Nm

0.05 - 1 MPa
(0.5 - 10 bar)
max. 60°C

FI = []

***) Mat.-Nr. 657927**



1 → **4**

5A

6A