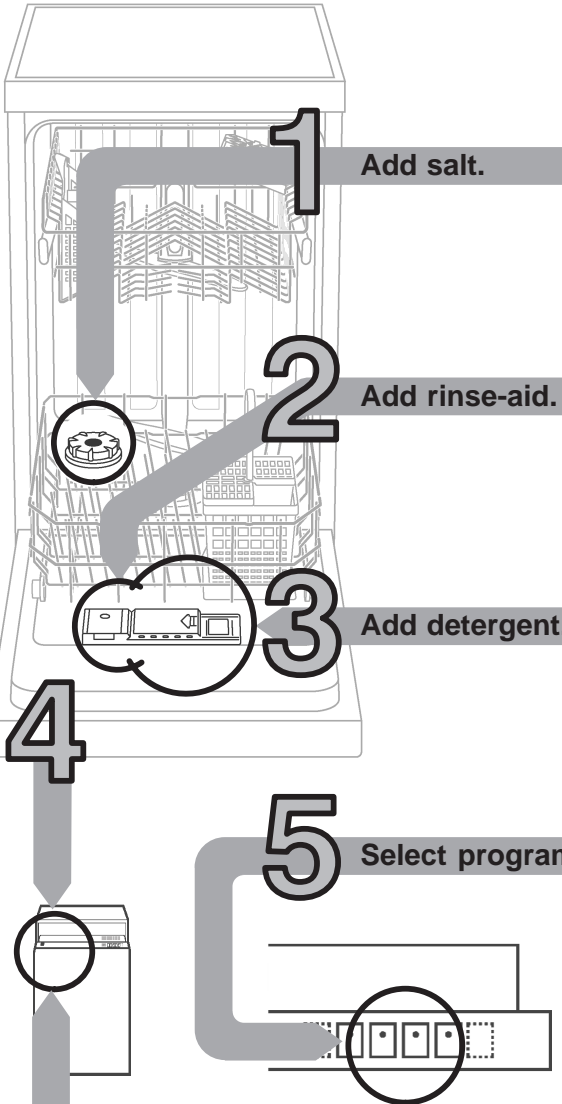




Short and handy: everything your dishwasher needs...
Before using for the first time, read the Installation and Operating Instructions!

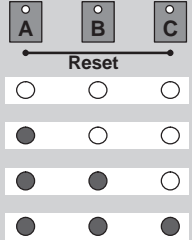


Setting the water softening system *

Find out the water **hardness** at your water utility company and **enter below**

Read off the setting

°dH	°fH	°Clarke	mmol/l	Setting
0-6	0-11	0-8	0-1.1	0
7-14	12-25	9-18	1.2-2.5	1
15-21	26-37	19-26	2.6-3.7	2
22-35	38-62	27-44	3.8-6.2	3



* **only before using the dishwasher for the first time or if the water hardness changes**

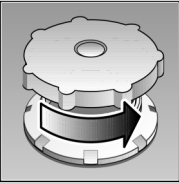
Quickly sorted

and then select a setting

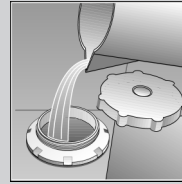
- Hold down programme button **B** and switch on the main switch, then release the buttons. The display flashes and buttons **A** and **B** illuminate (water hardness setting was set to 2 at the factory).
- Each time button **B** is depressed, the setting increases by one (0-3). If buttons **A**, **B** and **C** illuminate, the maximum water hardness setting has been reached. If the water hardness setting is now increased again, the lights go out and the water hardness setting is set to 0.
- Switch off the main switch. The selected setting has been stored in the appliance.

1 Add salt.

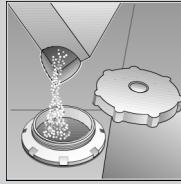
Dissolves limescale (not required for set value 0!)



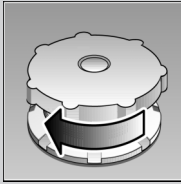
Unscrew the lid.



Only before using the dishwasher for the first time pour approx. 1 l / 1 1/4 pt water into the salt opening.



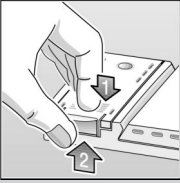
Pour in max. 1.5 kg / 3 lb 5 oz salt (never detergent!)



Screw on the lid. Switch on dishwasher immediately.

2 Add rinse-aid.

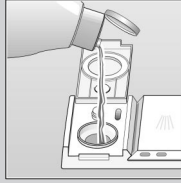
Everything is sparkling clean ...



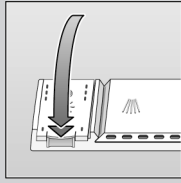
Press mark 1, lift up lid 2.



Refill whenever level indicator is light!



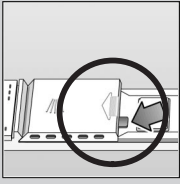
Pour in **rinse aid**.



Close the lid. **CLICK!**

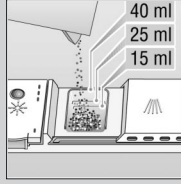
3 Add detergent.

Very dirty dishes, a lot of detergent ...

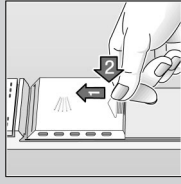


If required, open the lid (press the pin).

Warning,
combination products are not suitable for all programmes, follow manufacturer's instructions.



Pour in **detergent**.



Push the lid shut, press. **PLOP!**

5 Select programme.

Quick, economical or intensive ...

Overview of programmes

This overview indicates the max. possible number of programmes. The programmes which correspond to your appliance can be found on your appliance fascia.

The programme data are values measured in the laboratory in compliance with Standard EN 50242. Deviations in practice are possible.

	Intensive 70°	Normal 65°	Eco 50°	Quick 35°	Prerinse
Duration in minutes	103	98	155	30	20
Power consumption in kWh	1,40	1,20	0,80	0,50	0,10
Water consumption in litres	20	17	13	10	4

Switch appliance ON, off we go...

Press main switch, choose programme. Close door.

Switch appliance OFF, everything OK...

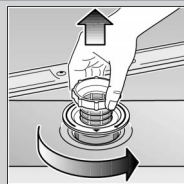
Signal sounds, open door. End-of-programme indicator flashes, press main switch.

Maintenance and care

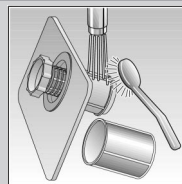
For perfect rinsing results

Filters

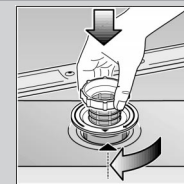
Check and, if required, clean:



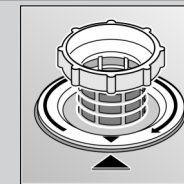
Rotate filter cylinder, remove filter system



Rinse under running water



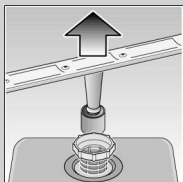
Insert



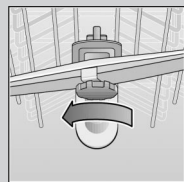
Screw on filter system. NOTE MARK!

Spray arms

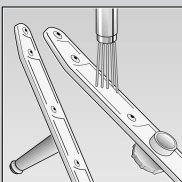
Remove blockages/deposits



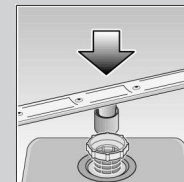
Pull up lower arm



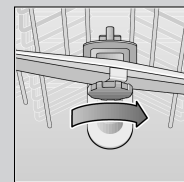
Unscrew upper arm



Clean under running water (if required, use a toothpick)



Insert lower arm



Screw on upper arm

Breakdown and assistance

The correct procedure

Problem	Possible causes
Water left in the appliance Appliance not working/ stopst ...	The appliance was opened during the programme ...
Appliance not working/ stops ...	No / too little water check whether ...
The crockery is not clean ...	Crockery is stacked too closely together/on top of each other ... Too little cleaning agent ... Wrong programme ... The spray arms are obstructed
There are powdery or greasy residues on the crockery ...	The filter is loose ... The filter is dirty ... The spray arm nozzles are blocked ... Too little water ...

Remedy

Close the appliance and switch it on, or stop the programme (see Stopping the programme).

the water supply is turned on, the supply fittings are not obstructed or furred up, the supply hose is not bent.

Reload according to the instructions. Refer to the manufacturer's instructions. Select the appropriate programme. Rearrange items causing a blockage (e.g. large spoons).

Clean the filter (see above) secure the filter correctly (MARKING). Clean the filter (see above). Clean the spray arms (see above).

See "Appliance is no longer working".

Problem	Possible causes
Plastic parts/crockery discoloured ...	Use a milder cleaning agent ... Too little cleaning agent ...
Milky deposits on the crockery (removable) ...	Rinsing agent dose too high (streaks visible) ... Rinsing agent dose too low ...
Glasses cloudy/dull ...	Water too hard ... Glasses not dishwasher-proof ... Unsuitable cleaning agent ...
Rust on the cutlery ...	Cutlery not rustproof ...

Remedy

Use a cleaning agent containing chlorine bleach. Refer to the manufacturer's instructions.

Reduce or increase the dosage according to the instructions.

Refill the special salt/adjust water softening system. Use dishwasher-proof glasses. Use a glass-enhancing cleaning agent.

Use dishwasher-proof cutlery.

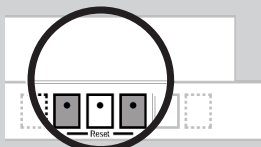
You will find further information in the instructions for use ... you may be able to solve the problem yourself.

Interrupting the programme ...

- Open the door.
- Press the **START/STOP** button.
- To continue, press the **START/STOP** button again.
- Close the door.

Terminating the programme ...

- Open the door.
- Press the two **RESET** buttons **simultaneously** (approx. 3 seconds) (**RESET**).
- Close the door.



After 1 minute the programme ends. The "signal sounds and the standby indicator illuminates".

Switch off the appliance.

Arranging dishes correctly ...

Arrange dishwasher-proof dishes in accordance with the operating manual (without residual ash, wax, lubricating grease, ink, sticky labels; remove any large remnants of jam, milk products or food) and check that the spray arms can rotate freely.