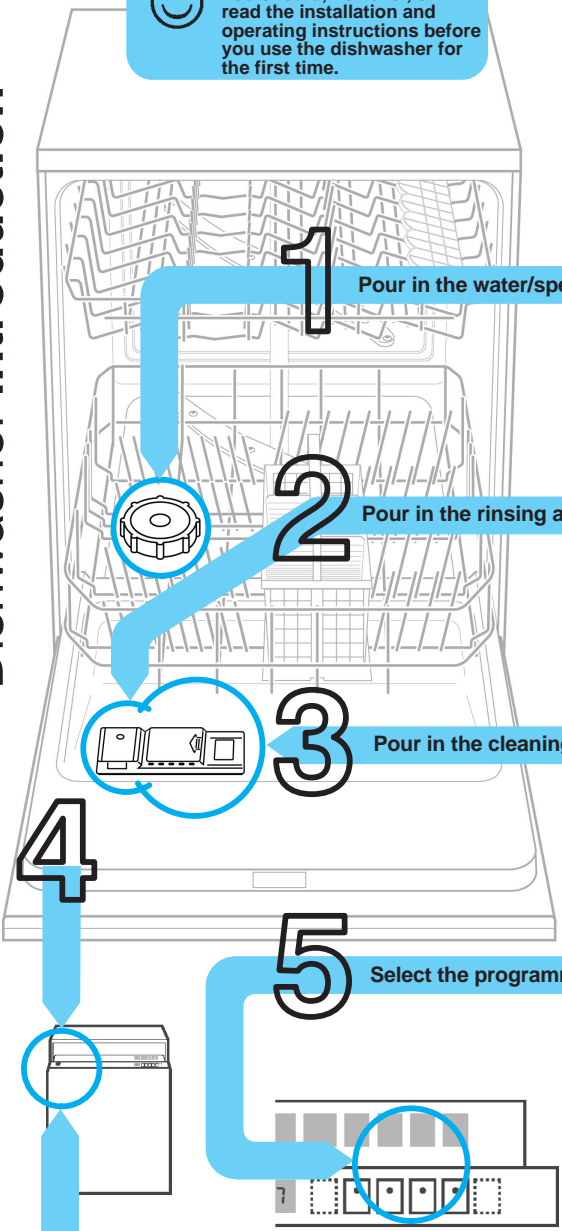




Quick and easy: everything you need to know about your dishwasher...
You should, however, still read the installation and operating instructions before you use the dishwasher for the first time.



Set the water softening system *

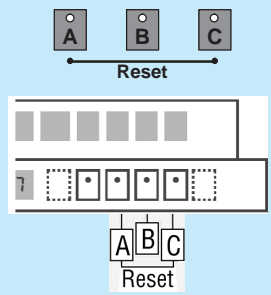
Find out the **water hardness** at your water utility company and **enter**



* only **before using** the dishwasher **for the first time** or if the **water hardness changes**

Read off the setting ...

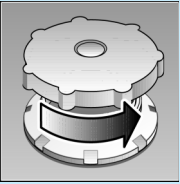
| °dH | °fH | °Clarke | mmol/l | |
|-------|-------|---------|---------|---|
| 0-6 | 0-11 | 0-8 | 0-1,1 | 0 |
| 7-8 | 12-15 | 9-10 | 1,2-1,4 | 1 |
| 9-10 | 16-17 | 11-12 | 1,5-1,8 | 2 |
| 11-12 | 18-21 | 13-15 | 1,9-2,1 | 3 |
| 13-16 | 22-29 | 16-20 | 2,2-2,9 | 4 |
| 17-21 | 30-37 | 21-26 | 3,0-3,7 | 5 |
| 22-30 | 38-54 | 27-38 | 3,8-5,4 | 6 |
| 31-50 | 55-89 | 39-62 | 5,5-8,9 | 7 |



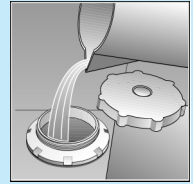
Quickly sorted ... and then set

- Hold down programme button **B** and switch on the main switch, then release the buttons. The display of button **B** and the number **4** set by the factory flash.
- Each time button **B** is depressed, the setting increases by one; if **7** has been reached, the display jumps back to **0**.
- Switch off the main switch. The selected setting has been stored in the appliance.

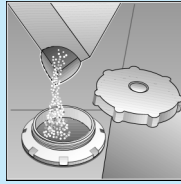
Dissolves limescale (not required for set value **0**!)



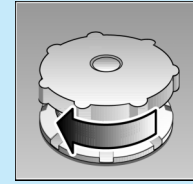
Unscrew the lid.



Only before using the dishwasher for the first time pour approx. 1 l / 1 1/4 pt water into the salt opening.

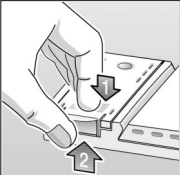


Pour in max. 1.5 kg / 3 lb 5 oz **salt** (never detergent!)



Screw on the lid. Switch on dishwasher immediately.

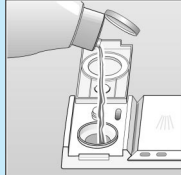
Everything is sparkling clean ...



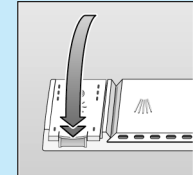
Press mark 1, lift up lid 2.



Refill whenever level indicator is light!

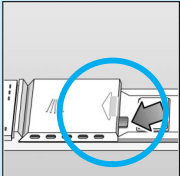


Pour in **rinse aid**.



Close the lid. **CLICK!**

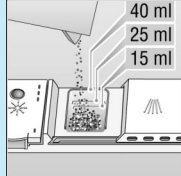
Very dirty dishes, a lot of detergent ...



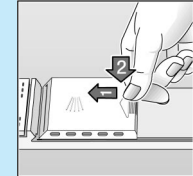
If required, open the lid (press the pin).



Warning,
combination products are not suitable for all programmes, follow manufacturer's instructions.



Pour in **detergent**.



Push the lid shut, press. **PLOP!**

Quick, economical or intensive ...

Programme overview

This overview lists the max. possible number of programmes. The programmes supplied with your appliance are indicated on the fascia.

The programme data are values measured in the laboratory in compliance with Standard EN 50242. Deviations in practice are possible.

| | Intensive 70° | Auto 55° /65° | Eco 50° | Gentle 40° | Quick 35° | Pre-rinse |
|--------------------------------|------------------|------------------|------------|---------------|--------------|-----------|
| Duration in minutes | 112 | 95-145 | 140 | 72 | 30 | 19 |
| Electricity consumption in kWh | 1,60 | 1,15-1,50 | 1,05 | 0,80 | 0,60 | 0,10 |
| Water consumption in litres | 21 | 11-19 | 14 | 15 | 10 | 4 |
| with Aquasensor | 18 | – | – | 12 | – | – |

Additional programmes **

Increased flexibility ...



Time selection
...switches on as soon as you press the time selection button:
Alters the programme start in hourly steps



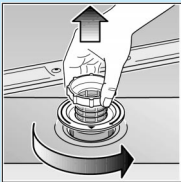
Upper basket cleaning
...Only the crockery in the upper basket is cleaned

** on some models

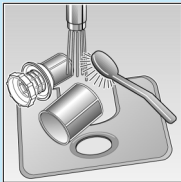
Maintenance and care

Filters

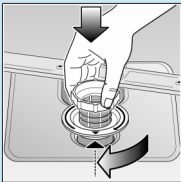
Check and, if required, clean:



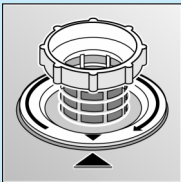
Rotate filter cylinder, remove filter system



Rinse under running water



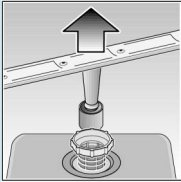
Insert



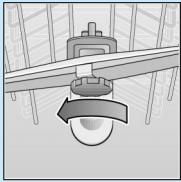
Screw on filter system. NOTE MARK!

Spray arms

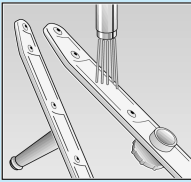
Remove blockages/deposits



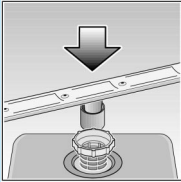
Pull up lower arm



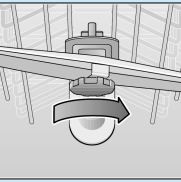
Unscrew upper arm



Clean under running water (if required, use a toothpick)





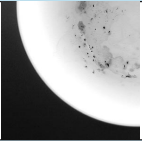

Insert lower arm



Screw on upper arm

Breakdown and assistance

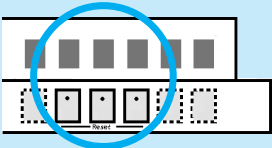
The correct procedure

| Problem | Possible causes | Remedy | Problem | Possible causes | Remedy |
|---|---|--|--|---|--|
| Water left in the appliance Appliance not working/ stopst ... | The appliance was opened during the programme ... | Close the appliance and switch it on, or stop the programme (see Stopping the programme). | Plastic parts/crockery discoloured ... | Use a milder cleaning agent ... Too little cleaning agent ... | Use a cleaning agent containing chlorine bleach. Refer to the manufacturer's instructions. |
| Appliance not working/ stops ... | No / too little water check whether ... | the water supply is turned on. the supply fittings are not obstructed or furred up. the supply hose is not bent. | Milky deposits on the crockery (removable) ... |  Rinsing agent dose too high (streaks visible) ... Rinsing agent dose too low ... | Reduce or increase the dosage according to the instructions. |
| The crockery is not clean ... |  Crockery is stacked too closely together/on top of each other ... Too little cleaning agent ... Wrong programme ... The spray arms are obstructed | Reload according to the instructions. Refer to the manufacturer's instructions. Select the appropriate programme. Rearrange items causing a blockage (e.g. large spoons). | Glasses cloudy/dull ... | Water too hard ... Glasses not dishwasher-proof ... Unsuitable cleaning agent ... | Refill the special salt/adjust water softening system. Use dishwasher-proof glasses. Use a glass-enhancing cleaning agent. |
| There are powdery or greasy residues on the crockery ... |  The filter is loose ... The filter is dirty ... The spray arm nozzles are blocked ... Too little water ... | Clean the filter (see above) secure the filter correctly (MARKING). Clean the filter (see above). Clean the spray arms (see above). See "Appliance is no longer working". | Rust on the cutlery ... |  Cutlery not rustproof ... | Use dishwasher-proof cutlery. |

You will find further information in the instructions for use ... you may be able to solve the problem yourself.

Stopping the programme ...

Press and hold the two reset buttons simultaneously for approximately 3 seconds while the programme is running (RESET)



"0" appears

The programme will stop after 1 minute

Switch off the appliance.

Loading the dishwasher correctly ...

Arrange dishwasher-proof utensils (having removed any ash, wax, grease, ink, sticky labels; remove, large remnants of jam, dairy products and food) according to the operating instructions and check that the spray arms can rotate freely.