

Installation instructions

For the installer and kitchen expert!

Important installation notes:

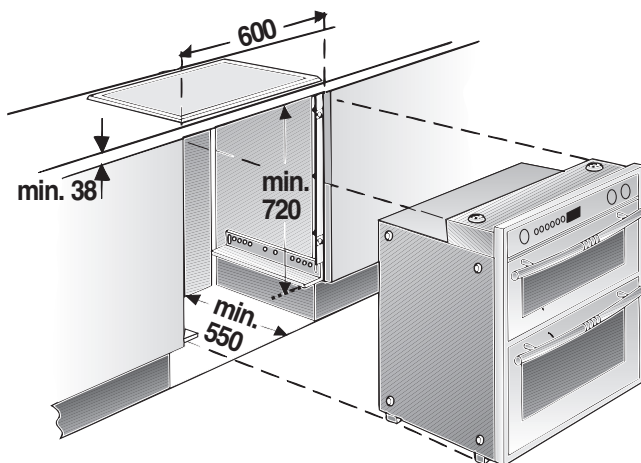
- ☐ Properly dispose of **packaging materials**.
- ☐ Do not use **oven door handle** for transporting or handling the unit during installation.
- ☐ **WARNING:** Connection and first start of the appliance may only be performed by an authorised specialist.
- ☐ Connection must be made using an H05VV-F mains connection cable.
- ☐ **Nominal connected loading, nominal voltage and model number of the appliance:**
see the rating plate, located behind the oven door, fixed to the lower left facing edge of the oven.
- ☐ **The unit's nameplate is located at on the right sidewall of the unit.**
- ☐ **Electrical safety** of the appliance can be ensured only if the equipment earth in the building installation has been installed according to regulations.
- ☐ On the installation side a isolating device shall be provided.
Any switch with a contact gap exceeding 3 mm may be considered a separating device.
Other examples are LS switches, fuses and contactors.
- ☐ **In the case of repairs** interrupt all power connections to the unit.
- ☐ **Connection diagram**



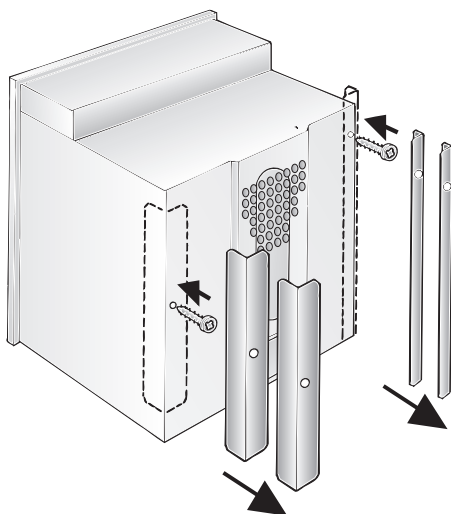
Kitchen furniture

Oven housing units from virtually all lines of kitchen furniture are suitable for installing the built-in oven. However, the veneers or plastic laminates on the housing unit must be applied with heat-resistant glue (90 °C). If plastic laminate or glue are not sufficiently heat-resistant, warping, bubbling or detachment of the finish may result.

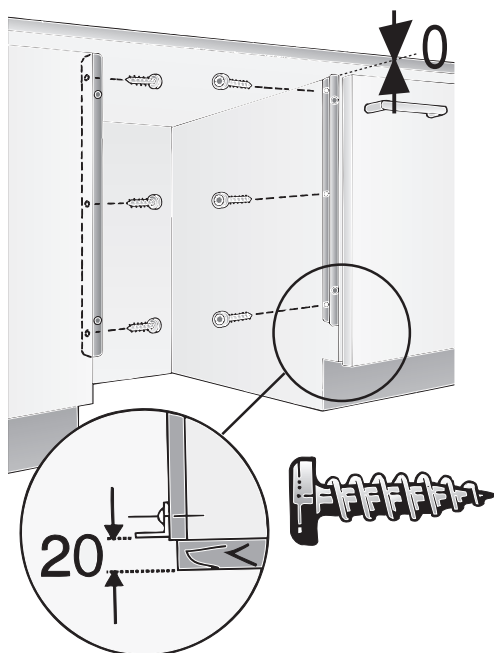
Installation without cupboard



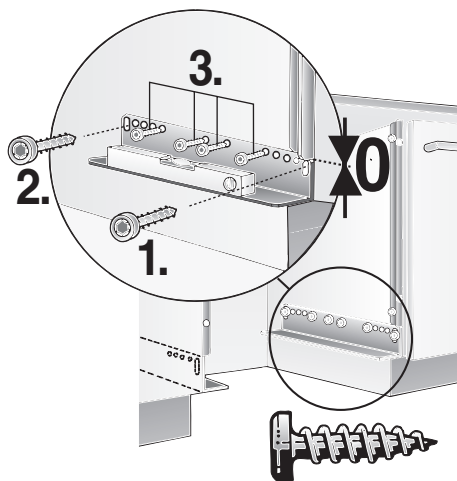
1.



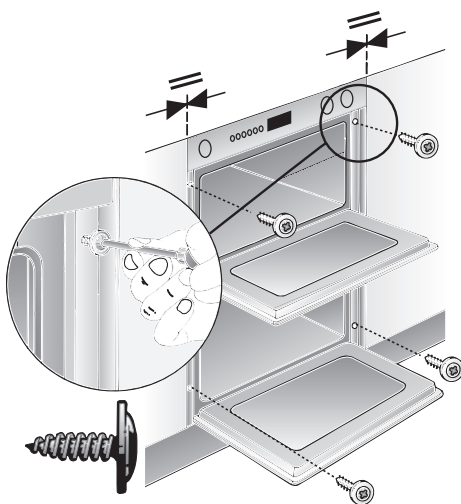
2.



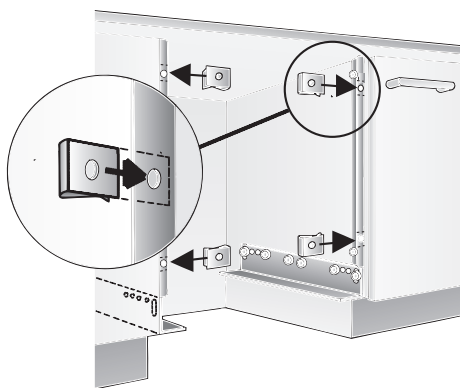
3.



5.



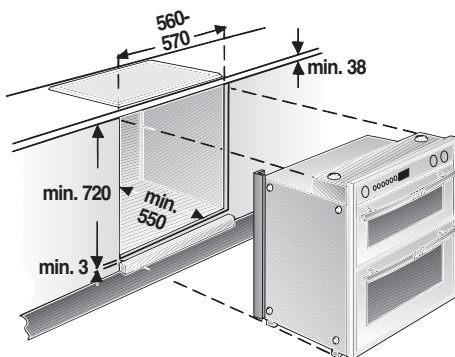
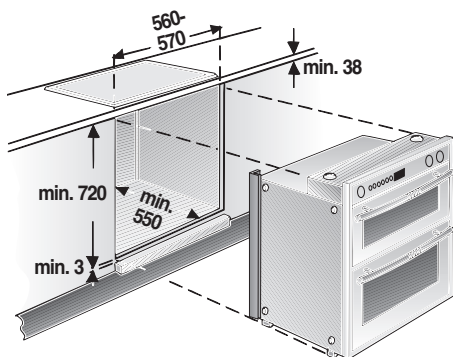
4.



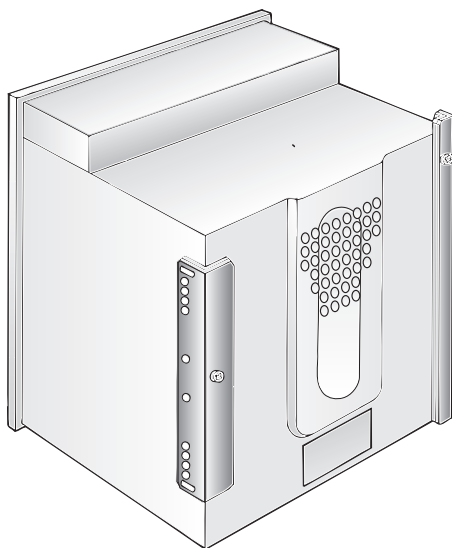
Installation of the built-in oven

- ☐ To burn-in the insulation, heat up the oven prior to installing the unit.
- ☐ Push the built-in oven into the housing unit and align the unit until it is in a **level position**.
- ☐ Open the oven door and, using one screw on each side, fasten the built-in oven to the side strips of the housing unit (see illustration).
The two screws (supplied with the built-in oven) must be started slightly outward.
- ☐ Verify that the built-in oven is positioned securely and in a **level position**, and that the required installation dimensions have been maintained.
- ☐ The properly installed appliance must be covered on all sides in such a fashion that not even components with rough insulation are exposed to the touch. The cover must be removable with tools only.

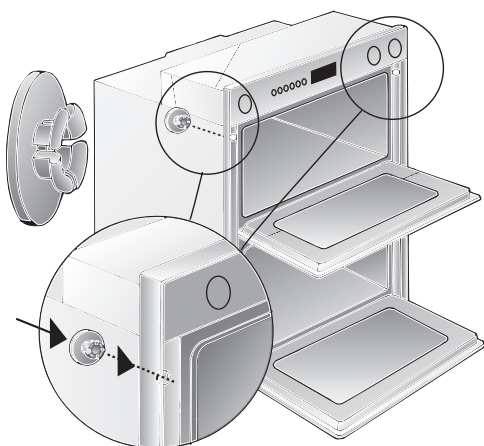
Installation with cupboard



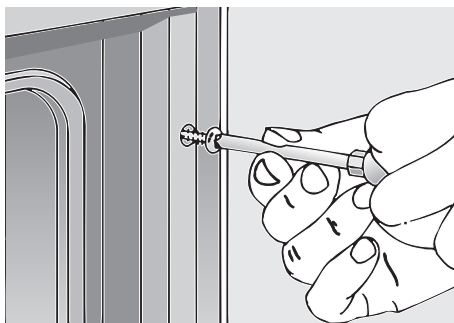
1.



2.



3.



Installation of the built-in oven

- ❑ To burn-in the insulation, heat up the oven prior to installing the unit.
- ❑ Push the built-in oven into the housing unit and align the unit until it is in a **level position**.
- ❑ Open the oven door and, using one screw on each side, fasten the built-in oven to the side strips of the housing unit (see illustration).
The two screws (supplied with the built-in oven) must be started slightly outward.
- ❑ Verify that the built-in oven is positioned securely and in a **level position**, and that the required installation dimensions have been maintained.
- ❑ The properly installed appliance must be covered on all sides in such a fashion that not even components with rough insulation are exposed to the touch. The cover must be removable with tools only.

