

Your washing machine

Congratulations – You have opted for a modern, high-quality domestic appliance manufactured by NEFF. The washing machine is distinguished by its economical use of water and energy.

Each appliance which leaves our factory is inspected thoroughly to ensure that it functions properly and is in perfect condition.

Contents

Intended use	1
Programmes	1
Set and adjust programme	3
Washing	3/4
After washing	4
Individual settings	5
Important information	6
Overview of programmes	7
Care	8
Information about the indicator lights	8
Maintenance	9
What to do if ...	10
Safety instructions	11
Consumption values	11

Protection of the environment/ Conservation tips

- Utilise the maximum amount of washing for the particular programme.
- Wash normally soiled washing without prewash.
- Instead of **Cottons 90 °C** programme, select **Stains 60 °C** and additional function **Intensive**. Comparable cleaning result with significantly lower energy consumption.
- Meter detergent according to the manufacturer's instructions and water hardness.
- If the washing is then dried in the tumble dryer, select spin speed according to the instructions of the dryer manufacturer.

Intended use

- for use in the household only,
- for the washing of machine-washable textiles in a detergent solution,
- to be operated with cold drinking water and commercially available detergents and care products which are suitable for use in washing machines.

- Do not leave children unattended near the washing machine!
- Keep pets away from the washing machine!

Programmes

Detailed programme overview -> Page 7.
Spin speed can be selected individually, irrespective of the selected programme and programme progress.

Cottons	Hard-wearing textiles
Stains	Hard-wearing textiles
Easy-Care	easy care textiles
Mix	different types of washing
Delicates	delicate washable textiles
Wool	hand-/machine-washable wool
Rinse	extra rinse with spin
Spin	extra spin with selectable spin speed
Drain	the rinsing water with Rinse Hold (Rinse stop = without final spin)

Preparation

Correct installation according to separate Installation instructions.

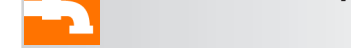
Checking the machine

- Never switch on a damaged machine!
- Inform your customer service!

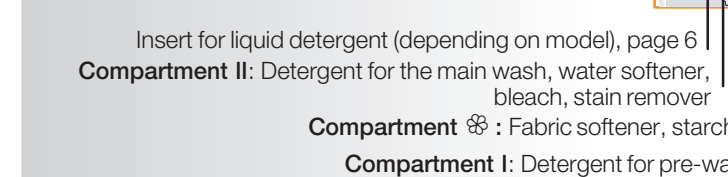
Insert mains plug

- **With dry hands only!**
- **Take hold of the plug only!**

Turn on the tap



Insert for liquid detergent (depending on model), page 6



Compartment II: Detergent for the main wash, water softener, bleach, stain remover
Compartment I: Detergent for pre-wash

Sorting and inserting the washing

Follow manufacturer's care information! According to the information on the care labels. According to type; colour; soiling and temperature. Do not exceed maximum load -> Page 7.

Follow Important instructions -> Page 6!

Insert large and small items of washing! Close the washing machine door. Take care not to trap any items of clothing between the loading door and rubber seal.

Add detergent and care product

Meter accordingly: Washing amount, soiling, water hardness (ask your water supply company) and manufacturer's instructions. Models without insert for liquid detergent: Pour liquid detergent into the appropriate dispenser and place in the drum. During operation: Caution when opening the detergent drawer!

Dilute viscous fabric softener and fabric conditioner with water. Prevents blockage of the overflow.

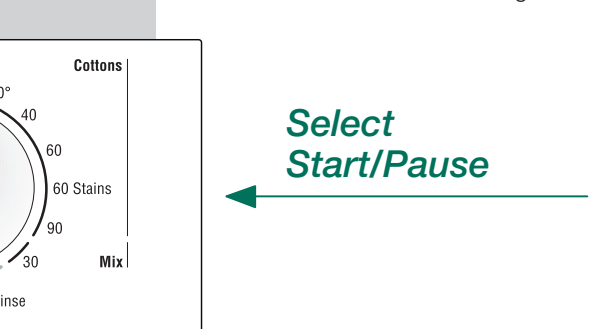
For additional functions and spin speed see individual settings -> Page 5.

Set and adjust programme

For additional functions and spin speed see individual settings -> Page 5.

Select Start/Pause

Programme selector for switching the machine on and off and for selecting the programme. Can be rotated in either direction.



Washing

Open washing machine door and remove washing.

If **Rinse Hold** (Rinse stop = without final spin) is active: Select the spin speed or set programme selector to **Drain** or **Spin**. Select **Start/Pause**.

Remove any foreign objects – risk of rusting.

Turn off tap

Information on Aqua Stop -> Installation instructions, Page 7.

Switch off

Set programme selector to **Off**.

End of programme when ...

... **Ready** is lit on the indicator light.

Change programme ...

If you have mistakenly selected a wrong programme:
– Reselect programme.
– Select **Start/Pause**.

Cancel programme ...

– Select **Start/Pause**.
– If required, top up the washing (do not leave the door open for too long as water from the washing could run out of the open door)
– Select **Start/Pause**.

... or terminate

Programmes with high temperature:
– Cool washing: Select **Rinse**.
– Select **Start/Pause**.

Programmes at lower temperature:
– Select **Spin** or **Drain**.
– Select **Start/Pause**.

Emergency release, e.g. in the event of a power failure

The programme continues to run when the power has been restored. However, if the laundry has to be removed, the washing machine door can be opened as follows:

- **Risk of scalding.** The detergent solution and laundry may be hot. If possible, leave it to cool down. Do not reach into the drum if it is still rotating. Do not open the washing machine door if water can be seen through the glass.

– Set the programme selector to **Off** and disconnect the mains plug.

– Drain the detergent solution -> page 9.

– Pull the emergency release with a tool and release. The washing machine door can then be opened.

Individual settings

Spin speed

The spin speed or **Rinse Hold** (Rinse stop = without final spin) can be set before and while the selected programme is running. Effects dependent on the programme progress. The maximum selectable spin speed depends on the model and the set programme.

Additional functions

Extend the washing time for a more intensive washing of heavily soiled items.

Intensive

For heavily soiled washing. Prewash at max. 30 °C.

Prewash

Special spin sequence with subsequent fluffing. Gentle final spin – residual moisture in the washing increased slightly.

Less Ironing

Additional rinse cycle, extended washing time. For areas with very soft water or for further improvement of the rinsing result.

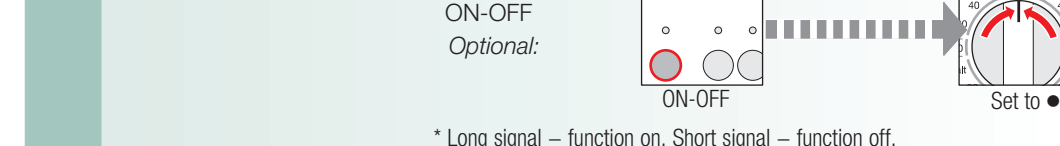
Extra Rinse

Start/Pause

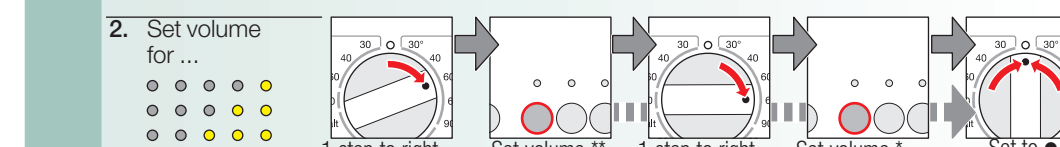
For starting or interrupting the programme.

Signal

1. Start signal mode



2. Set volume for ...



Button signals

Information signals

Blind mode* ON-OFF

Optional: ON-OFF

* Long signal – function on. Short signal – function off.

** If required, select repeatedly

Important information

Protecting the washing and the machine

- Empty pockets.
- Remove metal parts (paper clips, etc.).
- Wash delicates in the net/bag (tights, curtains, underwired bras).
- Close zips, button up covers.
- Brush sand out of pockets and collars.
- Remove curtain fittings or include in the net/bag.

Before washing for the first time

Do not put any washing in the washing machine! Turn on the tap, fill the appliance with approx. 1 litre of water and then pour ½ measuring cup of detergent into dispenser II. Set the **Easy-Care 60 °C** programme and select **Start/Pause**. At the end of the programme set the programme selector to **Off**.

Washing with different degrees of soiling

Light	Do not prewash.
heavy	Load less washing. Prewash. If required, pretreat stains. Select Intensive additional function.

Soaking

Load washing of the same colour
Pour soaking agent/detergent into dispenser II according to the manufacturer's instructions. Set **Cottons 30 °C** programme and select **Start/Pause**. After approx. 10 minutes select **Start/Pause**. After the required soaking time reselect **Start/Pause**, if the programme is to be continued or change the programme.

Starching

Laundry must not be treated with fabric softener
Starching is possible in all wash programmes if liquid starch is used. Add starch to the fabric softener compartment in accordance with the manufacturer's instructions.

Dyeing/bleaching

Dye in small quantities only. Salt can corrode stainless steel. Observe the dye manufacturer's specifications. Do not bleach laundry in the washing machine.

Insert for liquid detergent

Position insert for dispensing liquid detergent:
– Completely remove the detergent drawer -> Page 8.
– Push insert forwards.

- Do not use insert (push up);
- for gelatinous detergents and washing powders;
- for programmes with **Prewash**.

Emergency release, e.g. in the event of a power failure

The programme continues to run when the power has been restored. However, if the laundry has to be removed, the washing machine door can be opened as follows:

- **Risk of scalding.** The detergent solution and laundry may be hot. If possible, leave it to cool down. Do not reach into the drum if it is still rotating. Do not open the washing machine door if water can be seen through the glass.

– Set the programme selector to **Off** and disconnect the mains plug.

– Drain the detergent solution -> page 9.

– Pull the emergency release with a tool and release. The washing machine door can then be opened.

Programmes	°C		max.	Type of washing	Options; information
	30, 40, 60, 90 °C	60 °C			
Cottons	30, 40, 60, 90 °C		7.0 kg*	Hard-wearing textiles, heat-resistant textiles made of cotton or linen	Intensive, Prewash, Less Ironing, Extra Rinse
Stains	30, 40, 60 °C			Easy-care textiles made of cotton, linen, synthetic fibres or blended fabrics	Intensive, Prewash, Less Ironing, Extra Rinse
Easy-Care			3.5 kg	Textiles made of cotton and easy-care textiles	Intensive, Prewash, Less Ironing, Extra Rinse
Mix		30 °C		For delicate, washable textiles, eg. made of silk, satin, synthetic fibres or blended fabrics (e.g. curtains)	Intensive, Prewash, Less Ironing, Extra Rinse, only short spin between the rinse cycles
Delicates			2.0 kg	Hand or machine washable wool or rich-wool textiles	Particularly gentle wash programme to avoid shrinkage, longer programme breaks (fabrics rest in the detergent solution)
Wool	cold, 30 °C				Rinse, Spin, Drain

Additional programmes
 The programmes are time-controlled for lightly soiled textiles. If textiles are heavily soiled, reduce the load or select additional functions; e.g. **Intensive**. Programmes without prewash – pour detergent into dispenser II, programmes with prewash – divide detergent between dispensers I and II.
 * If washing 7.0 kg of cottons and coloured, select **Intensive** option.

For further information and a selection of our products go to our web site:
<http://www.neff.de>

9000 301 060
 0807
 W5420Y0GB

Care

- Risk of electric shock!
- Pull out the mains plug!
- Risk of explosion! No solvents!

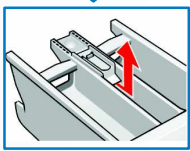
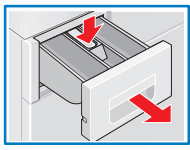
Machine housing, control panel

- Wipe with a soft, damp cloth.
- Do not use any abrasive cloths, sponges or cleaning agents (stainless-steel cleaner).
- Immediately remove washing and cleaning agent residue.
- Do not clean the appliance with a water jet.

Clean the detergent drawer ...

... if it contains detergent or fabric softener residue.

1. Pull out, depress insert, completely remove. Remove insert: Press insert upwards with finger.
2. Clean detergent dispenser and insert with water and a brush and dry.
3. Attach insert and engage (connect cylinder to guide pin).
4. Insert detergent drawer.



Leave detergent drawer open so that residual water can evaporate.

Drum

Leave washing machine door open so that the drum can dry out.
 Rust stains – use chlorine-free cleaning agent, not steel wool.

Descaling

No washing in the machine!

Not necessary if detergent dispensed correctly. However, follow the instructions of the descaler manufacturer.

Information about the indicator lights

depending on model

A signal sounds and the spin speed indicator lamps and the status displays flash:

<p>Close the washing machine door properly; washing may be caught.</p>	<p>Turn on the tap, supply hose kinked/jammed; Clean filter -> Page 9; water pressure too low.</p>	<p>Clean detergent solution pump -> Page 9; outlet pipe/drainage hose blocked.</p>
<p>Water in the base pan, appliance leaking. Call customer service!</p>	<p>Motor fault. Call customer service!</p>	

Other displays: Switch off the appliance, wait for 5 seconds and switch it back on. If the display appears again, call customer services -> *Installation instructions, Page 7.*

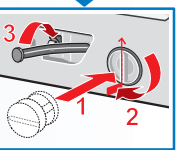
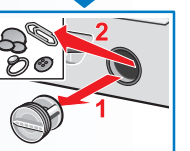
Maintenance

- Risk of scalding!
- Allow detergent solution to cool down!
- Turn off the tap!

Detergent solution pump

Set programme selector to **Off**, pull out the mains plug.

1. Take the drainage hose out of the retainer. Remove the sealing cap, allow the detergent solution to flow out. Push the sealing cap back on.
2. Carefully unscrew the pump cover (residual water).
3. Clean the interior, pump cover thread and pump housing (fan impeller in the detergent solution pump must rotate).
4. Re-insert pump cover and screw on tight, handle is upright. Insert the drain hose into the holder.



To prevent unused detergent from flowing into the outlet during the next wash: Pour 1 litre of water into dispenser II and start the **Drain** programme.

Filter in the water inlet hose

Risk of electric shock! Do not immerse Aqua-Stop safety device in water (contains electric valve).

Release water pressure in the supply hose:

1. Turn off the tap!
2. Select any programme (**except** Spin/Drain).
3. Select Start/Pause. Leave programme for approx. 40 seconds.
4. Set programme selector to **Off**. Pull out the mains plug.

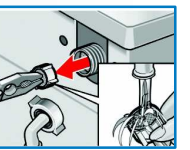
Clean filter:

- Depending on model:
- Remove hose from tap.
- Clean filter with small brush.



or

- Remove hose from the rear.
- Remove filter with pliers and clean.



2. Connect the hose and check for leaks.

What to do if ...

- Water is running out.
 - Correctly attach/replace drainage hose.
 - Tighten screw-fitting on the supply hose.
- Water not flowing in. Detergent not washed in.
 - **Start/Pause** not selected?
 - Tap not open?
 - Filter blocked? Clean filter -> Page 9.
 - Supply hose kinked or jammed?
- Washing machine door cannot be opened.
 - Safety function active. Programme stopped? -> page 4.
 - **Rinse Hold** (Rinse stop = without final spin) selected? -> Page 4.
 - Can be opened via emergency release only -> Page 6.
- Programme does not start.
 - **Start/Pause** selected?
 - Washing machine door closed?
- Detergent solution is not drained.
 - Clean detergent solution pump -> Page 9.
 - Clean outlet pipe and/or drainage hose.
- Water not visible in the drum.
 - Not a fault – water below the visible area.
- Spin result not satisfactory.
 - Wash small and large items of washing together.
 - **Less Ironing** selected? -> Page 5.
 - Too low speed selected? -> Page 3.
- Spin cycle actuated several times.
 - Not a fault – unbalanced load detection system adjusts imbalance.
- Dispenser not completely rinsed out.
 - Remove the insert. Clean detergent drawer and insert -> Page 8.
- Odour formation in the washing machine.
 - Run **Cottons 90 °C** programme without washing. Use standard detergent.
- Foam is coming out of the detergent drawer.
 - Too much detergent used? Mix 1 tablespoon of fabric conditioner with ½ litre of water and pour into dispenser II in the detergent drawer.
 - Reduce detergent dosage for the next wash cycle.
- Intense noise formation, vibrations and "wandering" during spin cycle.
 - Appliance feet fixed? Secure appliance feet -> *Installation instructions, Page 5.*
 - Transportation safety devices removed? Remove transportation protection devices -> *Installation instructions, Page 4.*
- Indicator lights do not function while the appliance is running.
 - Power failure?
 - Fuse tripped? Switch on/replace fuse.
 - If the fault occurs repeatedly, call customer service.
- Programme progress longer than usual.
 - Not a fault – unbalanced load detection system adjusts imbalance by repeatedly distributing the washing.
 - Not a fault – foam detection system active – a rinse cycle is started.
- Detergent residue on the washing.
 - Occasionally phosphate-free detergents contain water-insoluble residue.
 - Select **Wool** (Rinse) or brush the laundry after washing.
- In the pause state **Start/Pause** flashes very quickly and a signal sounds.
 - Water level too high. Top up washing is not possible. If required, close door immediately.
 - Select "Start/Pause" to continue the programme.
- If a fault cannot be rectified or a repair is required:
 - Set programme selector to **Off** and pull out the mains plug.
 - Turn off tap and call customer service -> *Installation instructions, Page 7.*

Safety instructions

- Read and follow the operating and installation instructions and all other information enclosed with the washing machine.
- Retain documents for subsequent use.

Risk of electric shock

- Never pull out the mains plug by tugging the power cord!
- Never insert/pull out the mains plug with damp hands.

Danger to life

Redundant appliances:

- Pull out the mains plug.
- Sever the power cord and discard together with the plug.
- Destroy the lock on the washing machine door. This will prevent children from locking themselves in and suffocating.

Risk of suffocation

- Keep packaging, plastic film and packaging parts out of the reach of children.

Risk of poisoning

Risk of explosion

- Keep detergents and care products out of the reach of children.
- Caused by detergents containing solvents, e.g. stain remover/items of washing pretreated with solvent naphtha may result in an explosion after being loaded into the washing machine. Before hand thoroughly rinse items of washing by hand.

Risk of injury

- Washing machine door may become very hot.
- Caution when draining hot detergent solution.
- Do not climb on the washing machine.
- Do not lean on the open washing machine door.
- Do not touch the drum in case it is still spinning.

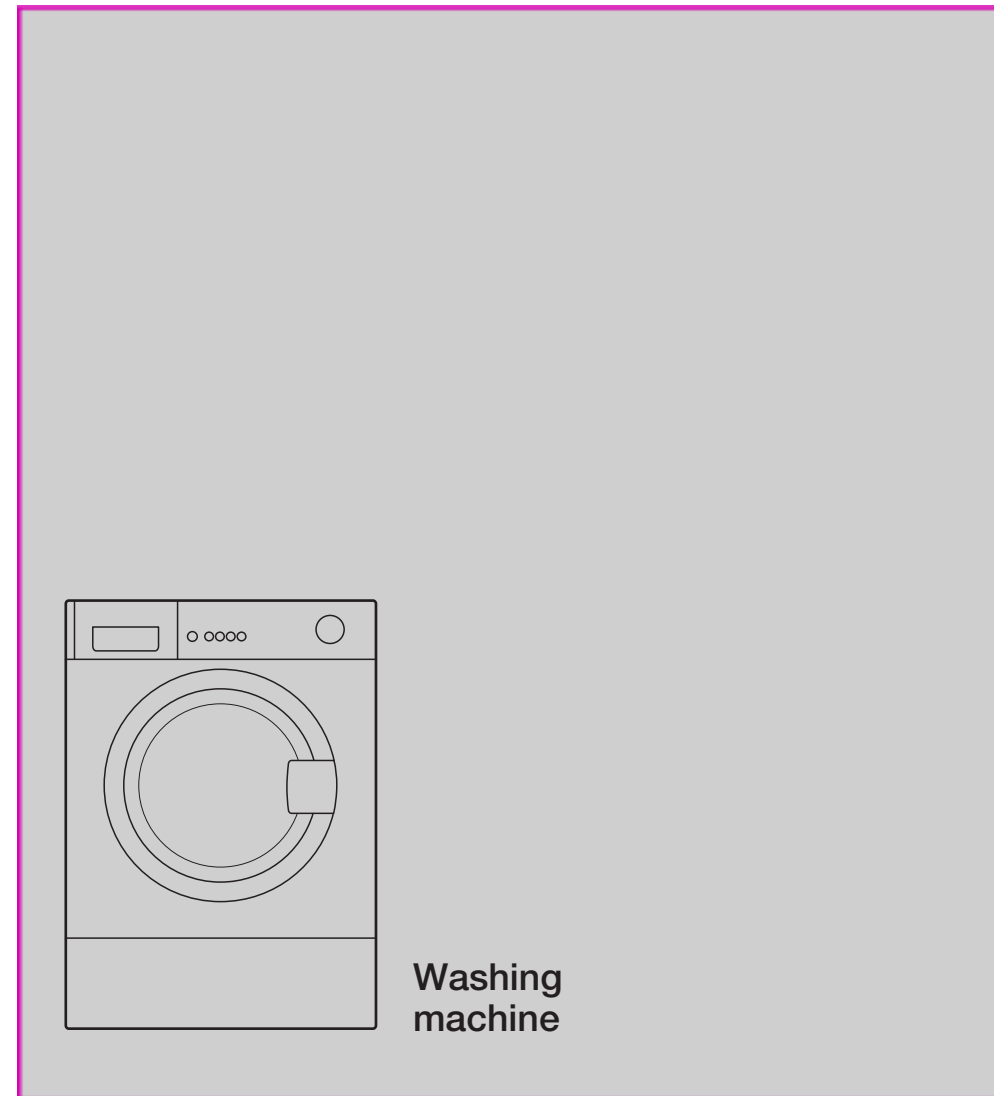
Consumption values

Programme	Additional function	Load	Current**	Water**	Programme duration**
Cottons 30 °C*	Intensive	7,0 kg	0.55 kWh	75 l	2:12 h
Cottons 40 °C*	Intensive	7,0 kg	0.85 kWh	75 l	2:12 h
Cottons 60 °C	Intensive	7,0 kg	1.50 kWh	75 l	2:12 h
Stains 60 °C*	Intensive	7,0 kg	1.19 kWh	49 l	2:25 h
Cottons 90 °C	Intensive	7,0 kg	2.51 kWh	90 l	2:12 h
Easy-Care 40 °C*	Intensive	3,5 kg	0.55 kWh	55 l	1:12 h
Easy-Care 40 °C (also suitable as Short programme)	-	3,5 kg	0.54 kWh	55 l	0:45 h
Delicates 30 °C	-	2,0 kg	0.20 kWh	39 l	0:40 h
Wool cold	-	2,0 kg	0.08 kWh	47 l	0:36 h
Wool 30 °C	-	2,0 kg	0.20 kWh	47 l	0:36 h

* Programme setting with maximum spin speed for conducting test according to currently valid European Standard 60456.

** The values deviate from the indicated values depending on water pressure, water hardness, water inlet temperature, room temperature, type and amount of washing and degree of soiling, utilised detergent, fluctuations in the mains voltage and selected additional functions.

Operating instructions



Read these instructions before switching on the washing machine!
 Also follow the separate **Installation instructions**.
 Follow the safety instructions on page 11!



Your washing machine

Congratulations – You have opted for a modern, high-quality domestic appliance manufactured by NEFF. The washing machine is distinguished by its economical use of water and energy.

Each appliance which leaves our factory is inspected thoroughly to ensure that it functions properly and is in perfect condition.

Contents

Page

Intended use	1
Programmes	1
Set and adjust programme	3
Washing	3/4
After washing	4
Individual settings	5
Important information	6
Overview of programmes	7
Care	8
Information about the indicator lights	8
Maintenance	9
What to do if ...	10
Safety instructions	11
Consumption values	11



Protection of the environment/ Conservation tips

- Utilise the maximum amount of washing for the particular programme.
- Wash normally soiled washing without prewash.
- Instead of **Cottons 90 °C** programme, select **Stains 60 °C** and additional function **Intensive**. Comparable cleaning result with significantly lower energy consumption.
- Meter detergent according to the manufacturer's instructions and water hardness.
- If the washing is then dried in the tumble dryer, select spin speed according to the instructions of the dryer manufacturer.

Intended use

- for use in the household only,
- for the washing of machine-washable textiles in a detergent solution,
- to be operated with cold drinking water and commercially available detergents and care products which are suitable for use in washing machines.

- Do not leave children unattended near the washing machine!
- Keep pets away from the washing machine!

Programmes

Detailed programme overview → Page 7.

Spin speed can be selected individually, irrespective of the selected programme and programme progress.

Cottons	Hard-wearing textiles
Stains	Hard-wearing textiles
Easy-Care	easy care textiles
Mix	different types of washing
Delicates	delicate washable textiles
Wool	hand-/machine-washable wool
Rinse	extra rinse with spin
Spin	extra spin with selectable spin speed
Drain	the rinsing water with Rinse Hold (Rinse stop = without final spin)

Preparation



Correct installation according to separate Installation instructions.



Checking the machine

- Never switch on a damaged machine!
- Inform your customer service!



Insert mains plug

- With dry hands only!
- Take hold of the plug only!



Turn on the tap

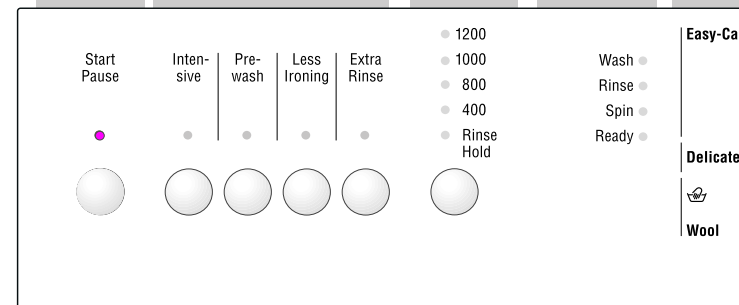
Insert for liquid detergent (depending on model), page 6
Compartment II: Detergent for the main wash, water softener, bleach, stain remover
Compartment ☼: Fabric softener, starch
Compartment I: Detergent for pre-wash

Start/
Pause

Additional
functions

Spin
speed

Status
displays



Programme
machines
the p
in either

Before washing for the first time,
wash once without any washing -> Page 6.

Sorting and inserting the washing

Follow manufacturer's care information!
According to the information on the care labels.
According to type; colour; soiling and temperature.
Do not exceed maximum load -> Page 7.

Follow Important instructions -> Page 6!

Insert large and small items of washing! Close the washing machine door. Take care not to trap any items of clothing between the loading door and rubber seal.

Add detergent and care product

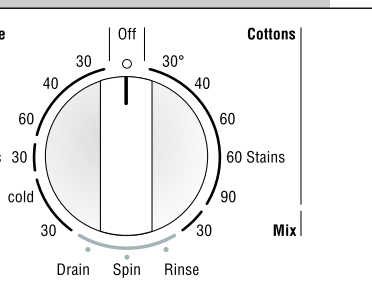
Meter accordingly:
Washing amount, soiling, water hardness (ask your water supply company) and manufacturer's instructions.
Models without insert for liquid detergent: Pour liquid detergent into the appropriate dispenser and place in the drum.
During operation: Caution when opening the detergent drawer!

i Dilute viscous fabric softener and fabric conditioner with water. Prevents blockage of the overflow.

Set and adjust programme

For additional functions and spin speed see individual settings -> Page 5.

Programme selector



Programme selector for switching the machine on and off and for selecting programme. Can be rotated in either direction.

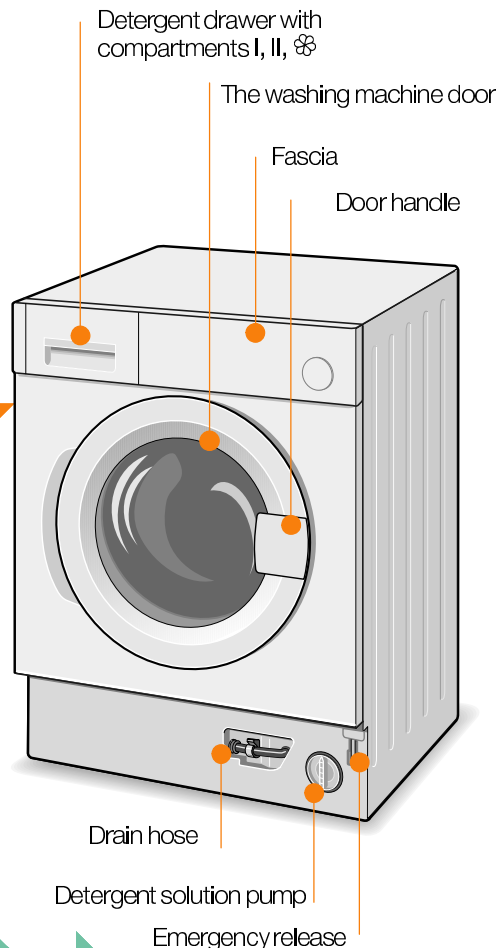
Select Start/Pause

Washing



1

2



Washing



3

Removing washing

Open washing machine door and remove washing.
If **Rinse Hold** (Rinse stop = without final spin) is active:
Select the spin speed or set programme selector to **Drain** or **Spin**. Select **Start/Pause**.
Remove any foreign objects – risk of rusting.

Turn off tap

Information on Aqua Stop
-> Installation instructions, Page 7.

Switch off

Set programme selector to **Off**.

End of programme when ...

... **Ready** is lit on the indicator light.

Change programme ...

If you have mistakenly selected a wrong programme:
- Reselect programme.
- Select **Start/Pause**.

Cancel programme ...

- Select **Start/Pause**.
- If required, top up the washing (do not leave the door open for too long as water from the washing could run out of the open door)
- Select **Start/Pause**.

... or terminate

Programmes with high temperature:
- Cool washing: Select **Rinse**.
- Select **Start/Pause**.
Programmes at lower temperature:
- Select **Spin** or **Drain**.
- Select **Start/Pause**.

Individual settings

Spin speed

The spin speed or **Rinse Hold** (Rinse stop = without final spin) can be set before and while the selected programme is running. Effects dependent on the programme progress. The maximum selectable spin speed depends on the model and the set programme.

Additional functions *see also programme overview*

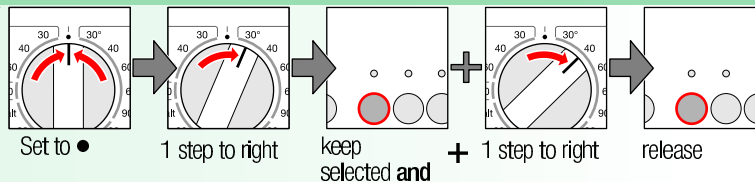
Intensive	Extend the washing time for a more intensive washing of heavily soiled items.
Prewash	For heavily soiled washing. Prewash at max. 30 °C.
Less Ironing	Special spin sequence with subsequent fluffing. Gentle final spin – residual moisture in the washing increased slightly.
Extra Rinse	Additional rinse cycle, extended washing time. For areas with very soft water or for further improvement of the rinsing result.

Start/Pause

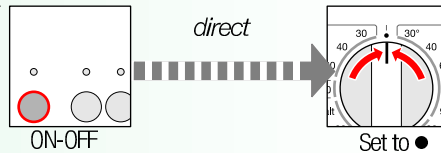
For starting or interrupting the programme.

Signal

1. Start signal mode



Blind mode*
ON-OFF
Optional:

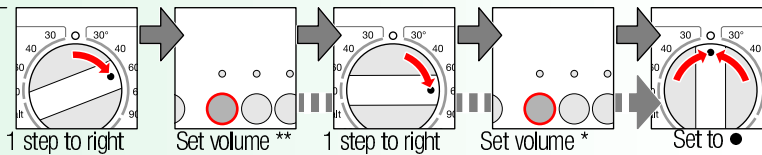
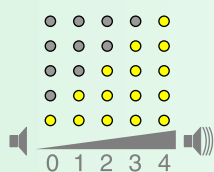


* Long signal – function on. Short signal – function off.

Button signals

Information signals

2. Set volume for ...



** If required, select repeatedly



Important information



Protecting the washing and the machine

- Empty pockets.
- Remove metal parts (paper clips, etc.).
- Wash delicates in the net/bag (tights, curtains, underwired bras).
- Close zips, button up covers.
- Brush sand out of pockets and collars.
- Remove curtain fittings or include in the net/bag.



Before washing for the first time,

Do not put any washing in the washing machine! Turn on the tap, fill the appliance with approx. 1 litre of water and then pour ½ measuring cup of detergent into dispenser II. Set the **Easy-Care 60 °C** programme and select **Start/Pause**. At the end of the programme set the programme selector to **Off**.



Washing with different degrees of soiling

Light	Wash new items separately. Do not prewash. If required, pretreat stains. Select Intensive additional function.
heavy	Load less washing. Prewash. If required, pretreat stains. Select Intensive additional function.



Soaking

Load washing of the same colour

Pour soaking agent/detergent into dispenser II according to the manufacturer's instructions. Set **Cottons 30 °C** programme and select **Start/Pause**. After approx. 10 minutes select **Start/Pause**. After the required soaking time reselect **Start/Pause**, if the programme is to be continued or change the programme.



Starching

Laundry must not be treated with fabric softener

Starching is possible in all wash programmes if liquid starch is used. Add starch to the fabric softener compartment ☞ in accordance with the manufacturer's instructions.



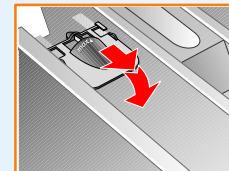
Dyeing/bleaching

Dye in small quantities only. Salt can corrode stainless steel. Observe the dye manufacturer's specifications. Do not bleach laundry in the washing machine.



Insert for liquid detergent

depending on model

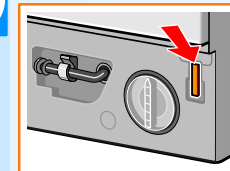


- Position insert for dispensing liquid detergent:
- Completely remove the detergent drawer → Page 8.
 - Push insert forwards.

- Do not use insert (push up):
- for gelatinous detergents and washing powders;
 - for programmes with **Prewash**.



Emergency release, e.g. in the event of a power failure



The programme continues to run when the power has been restored. However, if the laundry has to be removed, the washing machine door can be opened as follows:

- Risk of scalding.**
The detergent solution and laundry may be hot. If possible, leave it to cool down. Do not reach into the drum if it is still rotating. Do not open the washing machine door if water can be seen through the glass.
- Set the programme selector to **Off** and disconnect the mains plug.
- Drain the detergent solution → page 9.
- Pull the emergency release with a tool and release. The washing machine door can then be opened.

Overview of programmes

see also page 6

Programmes °C max. Type of washing Options; information

Programmes	°C	max.	Type of washing	Options; information
Cottons	30, 40, 60, 90 °C	7.0 kg*	Hard-wearing textiles, heat-resistant textiles made of cotton or linen	Intensive, Prewash, Less Ironing, Extra Rinse
Stains	60 °C			
Easy-Care	30, 40, 60 °C		Easy-care textiles made of cotton, linen, synthetic fibres or blended fabrics	Intensive, Prewash, Less Ironing, Extra Rinse
Mix		3.5 kg	Textiles made of cotton and easy-care textiles	Intensive, Prewash, Less Ironing, Extra Rinse; different types of washing can be washed together
Delicates	30 °C		For delicate, washable textiles, eg. made of silk, satin, synthetic fibres or blended fabrics (e.g. curtains)	Intensive, Prewash, Less Ironing, Extra Rinse; only short spin between the rinse cycles
Wool	cold, 30 °C	2.0 kg	Hand or machine washable wool or rich-wool textiles	Particularly gentle wash programme to avoid shrinkage; longer programme breaks (fabrics rest in the detergent solution)

Additional programmes

Rinse, Spin, Drain

i The programmes are time-controlled for lightly soiled textiles. If textiles are heavily soiled, reduce the load or select additional functions, e.g. **Intensive**. Programmes without prewash – pour detergent into dispenser **II**, programmes with prewash – divide detergent between dispensers **I** and **II**.

* If washing 7.0 kg of cottons and coloured, select **Intensive** option.

For further information and a selection of our products go to our web site: <http://www.neff.de>

9000 301 060
0807
W5420X0GB

Care



- Risk of electric shock! Pull out the mains plug!
- Risk of explosion! No solvents!



Machine housing, control panel

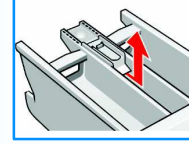
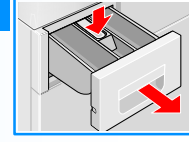
- Wipe with a soft, damp cloth.
- Do not use any abrasive cloths, sponges or cleaning agents (stainless-steel cleaner).
- Immediately remove washing and cleaning agent residue.
- Do not clean the appliance with a water jet.



Clean the detergent drawer ...

... if it contains detergent or fabric softener residue.

1. Pull out, depress insert, completely remove. Remove insert: Press insert upwards with finger.
2. Clean detergent dispenser and insert with water and a brush and dry.
3. Attach insert and engage (connect cylinder to guide pin).
4. Insert detergent drawer.



Leave detergent drawer open so that residual water can evaporate.



Drum

Leave washing machine door open so that the drum can dry out. Rust stains – use chlorine-free cleaning agent, not steel wool.



Descaling No washing in the machine!

Not necessary if detergent dispensed correctly. However, follow the instructions of the descaler manufacturer.

Information about the indicator lights

depending on model

A signal sounds and the spin speed indicator lamps and the status displays flash:

<p>Close the washing machine door properly; washing may be caught.</p>	<p>Turn on the tap, supply hose kinked/jammed; Clean filter -> Page 9; water pressure too low.</p>	<p>Clean detergent solution pump -> Page 9; outlet pipe/drainage hose blocked.</p>
<p>Water in the base pan, appliance leaking. Call customer service!</p>	<p>or</p> <p>or</p> <p>or</p>	<p>Motor fault. Call customer service!</p>

Other displays: Switch off the appliance, wait for 5 seconds and switch it back on. If the display appears again, call customer services -> *Installation instructions, Page 7.*

Maintenance

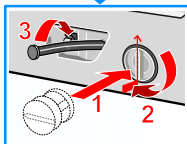
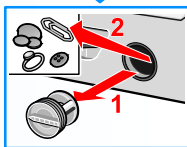


- Risk of scalding!
Allow detergent solution to cool down!
- Turn off the tap!

Detergent solution pump

Set programme selector to **Off**, pull out the mains plug.

1. Take the drainage hose out of the retainer. Remove the sealing cap, allow the detergent solution to flow out. Push the sealing cap back on.
2. Carefully unscrew the pump cover (residual water).
3. Clean the interior, pump cover thread and pump housing (fan impeller in the detergent solution pump must rotate).
4. Re-insert pump cover and screw on tight, handle is upright. Insert the drain hose into the holder.



To prevent unused detergent from flowing into the outlet during the next wash: Pour 1 litre of water into dispenser II and start the **Drain** programme.

Filter in the water inlet hose



Risk of electric shock! Do not immerse Aqua-Stop safety device in water (contains electric valve).

Release water pressure in the supply hose:

1. Turn off the tap!
2. Select any programme (**except** Spin/Drain).
3. Select Start/Pause. Leave programme for approx. 40 seconds.
4. Set programme selector to **Off**. Pull out the mains plug.

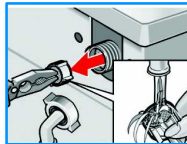
Clean filter:

1. Depending on model:
 - Remove hose from tap.
 - Clean filter with small brush.

or

- Remove hose from the rear.
- Remove filter with pliers and clean.

2. Connect the hose and check for leaks.



What to do if ...

- Water is running out.
 - Correctly attach/replace drainage hose.
 - Tighten screw-fitting on the supply hose.
- Water not flowing in. Detergent not washed in.
 - **Start/Pause** not selected?
 - Tap not open?
 - Filter blocked? Clean filter -> Page 9.
 - Supply hose kinked or jammed?
- Washing machine door cannot be opened.
 - Safety function active. Programme stopped? -> page 4.
 - **Rinse Hold** (Rinse stop = without final spin) selected? -> Page 4.
 - Can be opened via emergency release only -> Page 6.
- Programme does not start.
 - **Start/Pause** selected?
 - Washing machine door closed?
- Detergent solution is not drained.
 - Clean detergent solution pump -> Page 9.
 - Clean outlet pipe and/or drainage hose.
- Water not visible in the drum.
 - Not a fault - water below the visible area.
- Spin result not satisfactory.
 - Wash small and large items of washing together.
 - **Less Ironing** selected? -> Page 5.
 - Too low speed selected? -> Page 3.
- Spin cycle actuated several times.
 - Not a fault - unbalanced load detection system adjusts imbalance.
- Dispenser not completely rinsed out.
 - Remove the insert. Clean detergent drawer and insert -> Page 8.
- Odour formation in the washing machine.
 - Run **Cottons 90 °C** programme without washing. Use standard detergent.
- Foam is coming out of the detergent drawer.
 - Too much detergent used?
 - Mix 1 tablespoon of fabric conditioner with ½ litre of water and pour into dispenser II in the detergent drawer.
 - Reduce detergent dosage for the next wash cycle.
- Intense noise formation, vibrations and "wandering" during spin cycle.
 - Appliance feet fixed? Secure appliance feet -> Installation instructions, Page 5.
 - Transportation safety devices removed? Remove transportation protection devices -> Installation instructions, Page 4.
- Indicator lights do not function while the appliance is running.
 - Power failure?
 - Fuse tripped? Switch on/replace fuse.
 - If the fault occurs repeatedly, call customer service.
- Programme progress longer than usual.
 - Not a fault - unbalanced load detection system adjusts imbalance by repeatedly distributing the washing.
 - Not a fault - foam detection system active - a rinse cycle is started.
- Detergent residue on the washing.
 - Occasionally phosphate-free detergents contain water-insoluble residue.
 - Select **Rinse** (Rinse) or brush the laundry after washing.
- In the pause state **Start/Pause** flashes very quickly and a signal sounds.
 - Water level too high. Top up washing is not possible. If required, close door immediately.
 - Select "Start/Pause" to continue the programme.
- If a fault cannot be rectified or a repair is required:
 - Set programme selector to **Off** and pull out the mains plug.
 - Turn off tap and call customer service -> Installation instructions, Page 7.



Safety instructions

– Read and follow the operating and installation instructions and all other information enclosed with the washing machine.

– Retain documents for subsequent use.

Risk of electric shock

- Never pull out the mains plug by tugging the power cord!
- Never insert/pull out the mains plug with damp hands.

Danger to life

Redundant appliances:

- Pull out the mains plug.
- Sever the power cord and discard together with the plug.
- Destroy the lock on the washing machine door.
This will prevent children from locking themselves in and suffocating.

Risk of suffocation

- Keep packaging, plastic film and packaging parts out of the reach of children.

Risk of poisoning

- Keep detergents and care products out of the reach of children.
- Caused by detergents containing solvents, e.g. stain remover/items of washing pretreated with solvent naphtha may result in an explosion after being loaded into the washing machine. Before hand thoroughly rinse items of washing by hand.

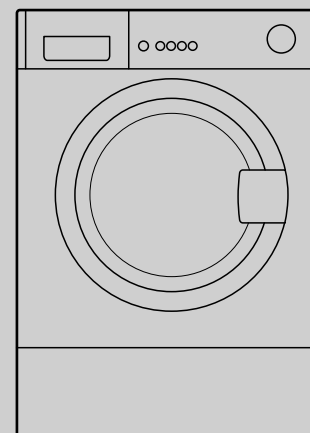
Risk of explosion

Risk of injury

- Washing machine door may become very hot.
- Caution when draining hot detergent solution.
- Do not climb on the washing machine.
- Do not lean on the open washing machine door.
- Do not touch the drum in case it is still spinning.

Operating instructions

en



Washing machine



**Read these instructions before switching on the washing machine!
Also follow the separate Installation instructions.
Follow the safety instructions on page 11!**



Consumption values

Programme	Additional function	Load	Current**	Water**	Programme duration**
Cottons 30 °C*	Intensive	7,0 kg	0.55 kWh	75 l	2:12 h
Cottons 40 °C*	Intensive	7,0 kg	0.85 kWh	75 l	2:12 h
Cottons 60 °C	Intensive	7,0 kg	1,50 kWh	75 l	2:12 h
Stains 60 °C*	Intensive	7,0 kg	1,19 kWh	49 l	2:25 h
Cottons 90 °C	Intensive	7,0 kg	2,51 kWh	90 l	2:12 h
Easy-Care 40 °C*	Intensive	3,5 kg	0,55 kWh	55 l	1:12 h
Easy-Care 40 °C (also suitable as Short programme)	–	3,5 kg	0.54 kWh	55 l	0:45 h
Delicates 30 °C	–	2,0 kg	0.20 kWh	39 l	0:40 h
Wool cold	–	2,0 kg	0.08 kWh	47 l	0:36 h
Wool 30 °C	–	2,0 kg	0.20 kWh	47 l	0:36 h

* Programme setting with maximum spin speed for conducting test according to currently valid European Standard 60456.

** The values deviate from the indicated values depending on water pressure, water hardness, water inlet temperature, room temperature, type and amount of washing and degree of soiling, utilised detergent, fluctuations in the mains voltage and selected additional functions.