

# Your washing machine

**Congratulations** – You have opted for a modern, high-quality domestic appliance manufactured by NEFF. The washing machine is distinguished by its economical use of water and energy.

Each appliance which leaves our factory is inspected thoroughly to ensure that it functions properly and is in perfect condition.

For further information and a selection of our products go to our web site: <http://www.neff.de>

## Contents

	Page
■ Intended use	1
■ Programmes	1
■ Set and adjust programme	3
■ Washing	3/4
■ After washing	4
■ Individual settings	5
■ Important information	6
■ Emergency release	6
■ Overview of programmes	7
■ Safety instructions	8
■ Consumption values	8
■ Care	9
■ Information about the indicator lights	9
■ Maintenance	10
■ What to do if ...	11

## Protection of the environment/ Conservation tips

- Utilise the maximum amount of washing for the particular programme.
- Wash normally soiled washing without prewash.
- Instead of **Cottons 90 °C** programme, select **Stains 60 °C** and additional function **Intensive**. Comparable cleaning result with significantly lower energy consumption.
- Meter detergent according to the manufacturer's instructions and waterhardness.
- If the washing is then dried in the tumble dryer, select spin speed according to the instructions of the dryer manufacturer.

## Intended use

- for use in the household only,
- for the washing of machine-washable textiles in a detergent solution,
- to be operated with cold drinking water and commercially available detergents and care products which are suitable for use in washing machines.

- ⚠ Do not leave children unattended near the washing machine!
- Keep pets away from the washing machine!

**Programmes**  
Detailed programme overview → Page 7.  
Spin speed can be selected individually, irrespective of the selected programme and programme progress.

Cottons	Hard-wearing textiles
Stains	Hard-wearing textiles
Easy-Care	easy care textiles
Mix	different types of washing
Delicates	delicate washable textiles
Wool	hand-/machine-washable wool
Rinse	extra rinse with spin
Spin	extra spin with selectable spin speed
Drain	the rinsing water with <b>Rinse Hold</b> (Rinse stop = without final spin)

## Preparation

⚠ Correct installation according to separate *Installation instructions*.

### Checking the machine

- Never switch on a damaged machine!
- Inform your customer service!

### Insert mains plug

- ⚠ With dry hands only! Take hold of the plug only!

### Turn on the tap

Insert for liquid detergent (depending on model), page 6  
**Compartment II:** Detergent for the main wash, water softener, bleach, stain remover  
**Compartment ⌘:** Fabric softener, starch  
**Compartment I:** Detergent for pre-wash

## Sorting and inserting the washing

Follow manufacturer's care information! According to the information on the care labels. According to type; colour; soiling and temperature. Do not exceed maximum load → Page 7.

Follow Important instructions → Page 6!  
Insert large and small items of washing! Close the washing machine door. Take care not to trap any items of clothing between the loading door and rubber seal.

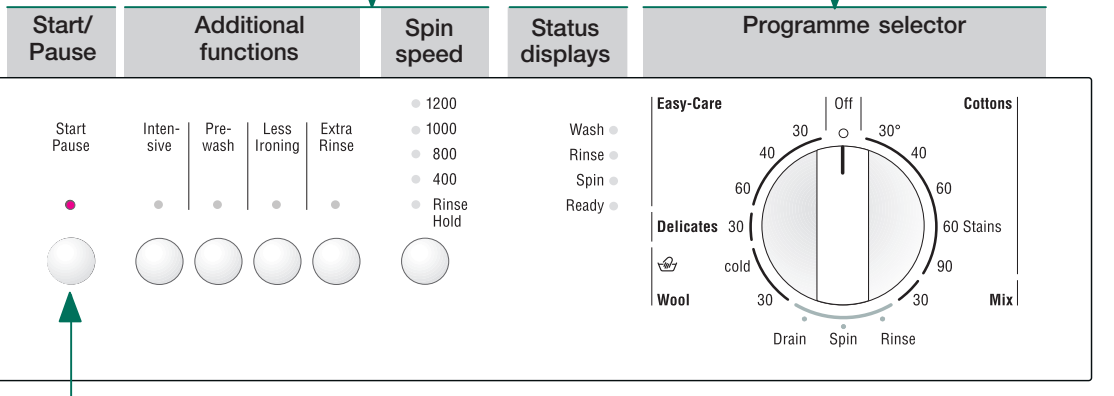
### Add detergent and care product

Meter accordingly: Washing amount, soiling, water hardness (ask your water supply company) and manufacturer's instructions. Models without insert for liquid detergent: Pour liquid detergent into the appropriate dispenser and place in the drum. During operation: Caution when opening the detergent drawer!

ⓘ Dilute viscous fabric softener and fabric conditioner with water. This prevents blockages.

## Set and adjust programme

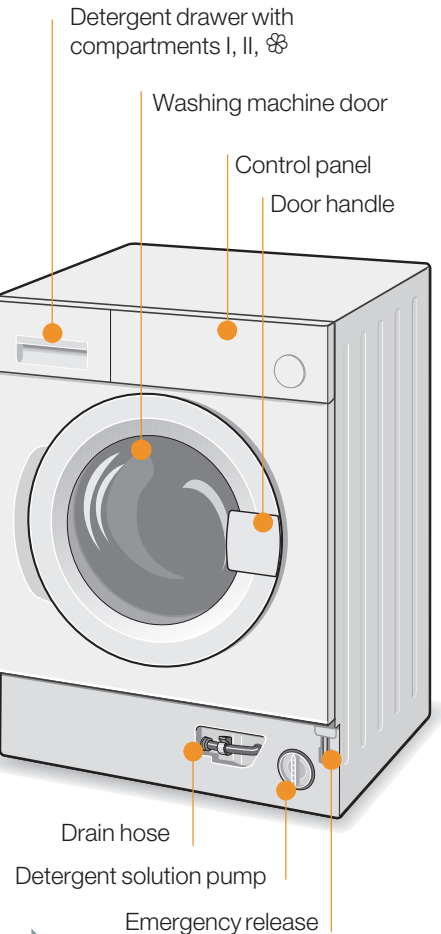
For additional functions and spin speed see individual settings → Page 5.



Select **Start/Pause**

ⓘ Programme selector for switching the machine on and off and for selecting the programme. Can be rotated in either direction.

## Washing



## Washing

## Removing washing

Open washing machine door and remove washing.  
If **Rinse Hold** (Rinse stop = without final spin) is active: Select the spin speed or set programme selector to **Drain** or **Spin**. Select **Start/Pause**.  
Remove any foreign objects – risk of rusting.

### Turn off tap

Information on Aqua Stop → *Installation instructions*, Page 7.

### Switch off

Set programme selector to **Off**.

## End of programme when ...

... **Ready** is lit on the indicator light.

## Change programme ...

If you have mistakenly selected a wrong programme:  
– Reselect programme.  
– Select **Start/Pause**.

## Cancel programme ...

– Select **Start/Pause**.  
– If required, top up the washing (do not leave the door open for too long as water from the washing could run out of the open door)  
– Select **Start/Pause**.

## ... or terminate

Programmes with high temperature:  
– Cool washing: Select **Rinse**.  
– Select **Start/Pause**.  
Programmes at lower temperature:  
– Select **Spin** or **Drain**.  
– Select **Start/Pause**.

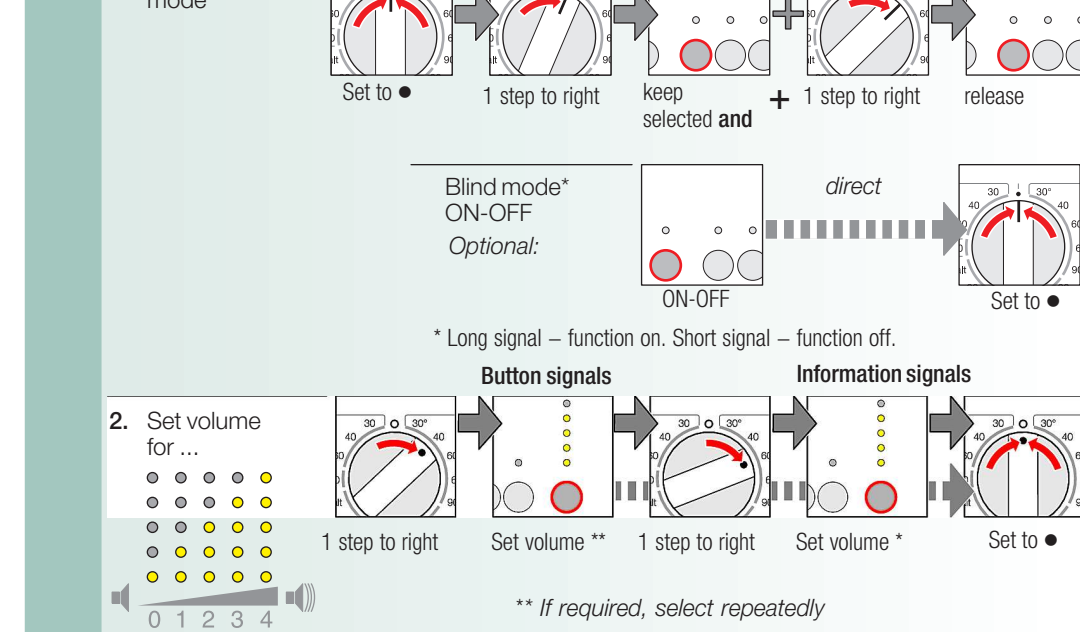
## Individual settings

● <b>Spin speed</b>	The spin speed or <b>Rinse Hold</b> (Rinse stop = without final spin) can be set before and while the selected programme is running. Effects dependent on the programme progress. The maximum selectable spin speed depends on the model and the set programme.
● <b>Additional functions</b>	see also <i>programme overview</i>
● <b>Intensive</b>	Extend the washing time for a more intensive washing of heavily soiled items.
● <b>Prewash</b>	For heavily soiled washing. Prewash at max. 30 °C.
● <b>Less Ironing</b>	Special spin sequence with subsequent fluffing. Gentle final spin – residual moisture in the washing increased slightly.
● <b>Extra Rinse</b>	Additional rinse cycle, extended washing time. For areas with very soft water or for further improvement of the rinsing result.

### Start/Pause

For starting or interrupting the programme.

### Signal



## Important information

### Protecting the washing and the machine

- Empty pockets.
- Remove metal parts (paper clips, etc.).
- Wash delicates in the net/bag (tights, curtains, underwired bras).
- Close zips, button up covers.
- Brush sand out of pockets and collars.
- Remove curtain fittings or include in the net/bag.

### Before washing for the first time,

Do not put any washing in the washing machine! Turn on the tap, fill approx. 1 litre of water and then pour ½ measuring cup of detergent into dispenser II. Set the **Easy-Care 60 °C** programme and select **Start/Pause**. At the end of the programme set the programme selector to **Off**.

### Washing with different degrees of soiling

Light	Do not prewash.
heavy	If required, pretreat stains. Select <b>Intensive</b> additional function.
	Load less washing. Prewash. If required, pretreat stains. Select <b>Intensive</b> additional function.

### Soaking

Load washing of the same colour  
Pour soaking agent/detergent into dispenser II according to the manufacturer's instructions. Set **Cottons 30 °C** programme and select **Start/Pause**. After approx. 10 minutes select **Start/Pause**. After the required soaking time reselect **Start/Pause**, if the programme is to be continued or change the programme.

### Starching

Laundry must not be treated with fabric softener  
Starching is possible in all wash programmes if liquid starch is used. Add starch to the fabric softener compartment ⌘ in accordance with the manufacturer's instructions.

### Dyeing/bleaching

Dye in small quantities only. Salt can corrode stainless steel. Observe the dye manufacturer's specifications. Do not bleach laundry in the washing machine.

### Insert for liquid detergent

Position insert for dispensing liquid detergent:  
– Completely remove the detergent drawer → Page 9.  
– Push insert forwards.  
Do not use insert (push up):  
– for gelatinous detergents and washing powders;  
– for programmes with **Prewash**.

### Emergency release, e.g. in the event of a power failure

The programme continues to run when the power has been restored. However, if the laundry has to be removed, the washing machine door can be opened as follows:  
⚠ Risk of scalding. The detergent solution and laundry may be hot. If possible, leave it to cool down. Do not reach into the drum if it is still rotating. Do not open the washing machine door if water can be seen through the glass.  
– Set the programme selector to **Off** and disconnect the mains plug.  
– Drain the detergent solution → page 10.  
– Pull the emergency release with a tool and release. The washing machine door can then be opened.





# Your washing machine

**Congratulations** – You have opted for a modern, high-quality domestic appliance manufactured by NEFF. The washing machine is distinguished by its economical use of water and energy.

Each appliance which leaves our factory is inspected thoroughly to ensure that it functions properly and is in perfect condition.

For further information and a selection of our products go to our web site: <http://www.neff.de>

## Contents

Page

Intended use	1
Programmes	1
Set and adjust programme	3
Washing	3/4
After washing	4
Individual settings	5
Important information	6
Emergency release	6
Overview of programmes	7
Safety instructions	8
Consumption values	8
Care	9
Information about the indicator lights	9
Maintenance	10
What to do if ...	11



### Protection of the environment/ Conservation tips

- Utilise the maximum amount of washing for the particular programme.
- Wash normally soiled washing without prewash.
- Instead of **Cottons 90 °C** programme, select **Stains 60 °C** and additional function **Intensive**. Comparable cleaning result with significantly lower energy consumption.
- Meter detergent according to the manufacturer's instructions and water hardness.
- If the washing is then dried in the tumble dryer, select spin speed according to the instructions of the dryer manufacturer.

## Intended use

- for use in the household only,
- for the washing of machine-washable textiles in a detergent solution,
- to be operated with cold drinking water and commercially available detergents and care products which are suitable for use in washing machines.



- Do not leave children unattended near the washing machine!
- Keep pets away from the washing machine!

## Programmes

Detailed programme overview → Page 7.

Spin speed can be selected individually, irrespective of the selected programme and programme progress.

<b>Cottons</b>	Hard-wearing textiles
<b>Stains</b>	Hard-wearing textiles
<b>Easy-Care</b>	easy care textiles
<b>Mix</b>	different types of washing
<b>Delicates</b>	delicate washable textiles
<b>Wool</b>	hand-/machine-washable wool
<b>Rinse</b>	extra rinse with spin
<b>Spin</b>	extra spin with selectable spin speed
<b>Drain</b>	the rinsing water with <b>Rinse Hold</b> (Rinse stop = without final spin)

## Preparation



Correct installation according to separate Installation instructions.



### Checking the machine

- Never switch on a damaged machine!
- Inform your customer service!



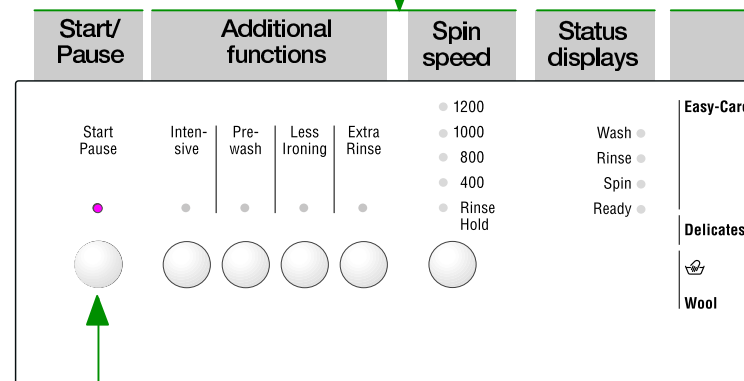
### Insert mains plug

- With dry hands only!
- Take hold of the plug only!



### Turn on the tap

Insert for liquid detergent (depending on model), page 6  
**Compartment II:** Detergent for the main wash, water softener, bleach, stain remover  
**Compartment** : Fabric softener, starch  
**Compartment I:** Detergent for pre-wash



Programme  
machines  
the p  
in eit

Before washing for the first time,  
wash once without any washing -> Page 6.

## Sorting and inserting the washing

Follow manufacturer's care information!  
According to the information on the care labels.  
According to type; colour; soiling and temperature.  
Do not exceed maximum load -> Page 7.

Follow Important instructions -> Page 6!

Insert large and small items of washing! Close the washing machine door. Take care not to trap any items of clothing between the loading door and rubber seal.

## Add detergent and care product

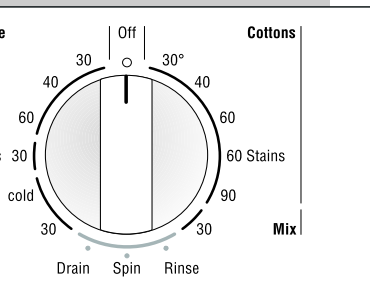
Meter accordingly:  
Washing amount, soiling, water hardness (ask your water supply company) and manufacturer's instructions.  
Models without insert for liquid detergent: Pour liquid detergent into the appropriate dispenser and place in the drum.  
During operation: Caution when opening the detergent drawer!

**i** Dilute viscous fabric softener and fabric conditioner with water. This prevents blockages.

## Set and adjust programme

For additional functions and spin speed see individual settings -> Page 5.

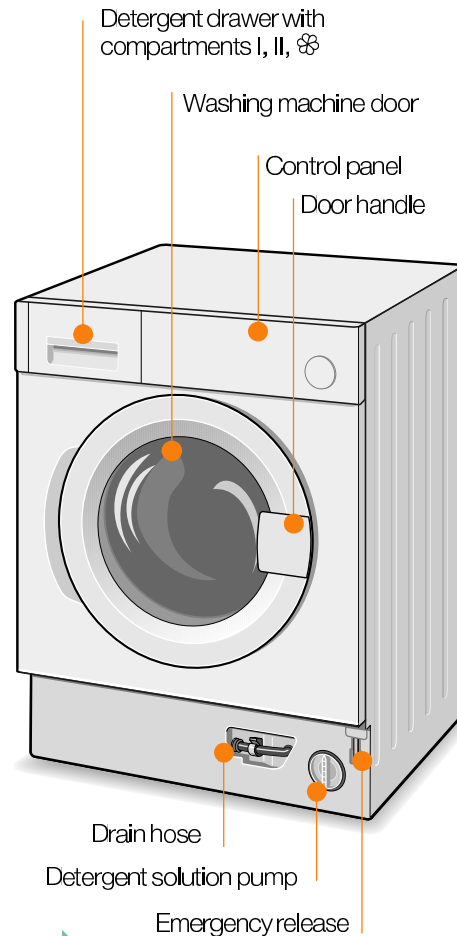
### Programme selector



Select  
Start/Pause

Programme selector for switching the machine on and off and for selecting programme. Can be rotated in either direction.

# Washing



# Washing

## Removing washing

Open washing machine door and remove washing.  
If **Rinse Hold** (Rinse stop = without final spin) is active:  
Select the spin speed or set programme selector to **Drain** or **Spin**. Select **Start/Pause**.  
Remove any foreign objects – risk of rusting.

## Turn off tap

Information on Aqua Stop  
-> Installation instructions, Page 7.

## Switch off

Set programme selector to **Off**.

## End of programme when ...

... **Ready** is lit on the indicator light.

## Change programme ...

If you have mistakenly selected a wrong programme:  
– Reselect programme.  
– Select **Start/Pause**.

## Cancel programme ...

– Select **Start/Pause**.  
– If required, top up the washing (do not leave the door open for too long as water from the washing could run out of the open door)  
– Select **Start/Pause**.

## ... or terminate

Programmes with high temperature:  
– Cool washing: Select **Rinse**.  
– Select **Start/Pause**.  
Programmes at lower temperature:  
– Select **Spin** or **Drain**.  
– Select **Start/Pause**.



# Individual settings

## Spin speed

The spin speed or **Rinse Hold** (Rinse stop = without final spin) can be set before and while the selected programme is running. Effects dependent on the programme progress. The maximum selectable spin speed depends on the model and the set programme.

## Additional functions *see also programme overview*

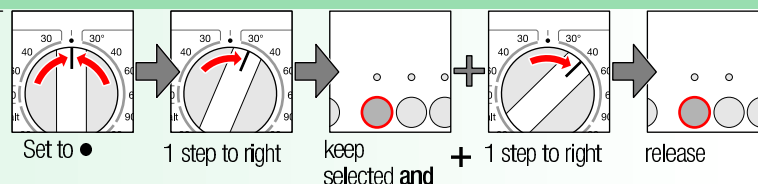
<b>Intensive</b>	Extend the washing time for a more intensive washing of heavily soiled items.
<b>Prewash</b>	For heavily soiled washing. Prewash at max. 30 °C.
<b>Less Ironing</b>	Special spin sequence with subsequent fluffing. Gentle final spin – residual moisture in the washing increased slightly.
<b>Extra Rinse</b>	Additional rinse cycle, extended washing time. For areas with very soft water or for further improvement of the rinsing result.

## Start/Pause

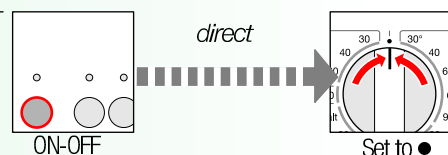
For starting or interrupting the programme.

## Signal

### 1. Start signal mode

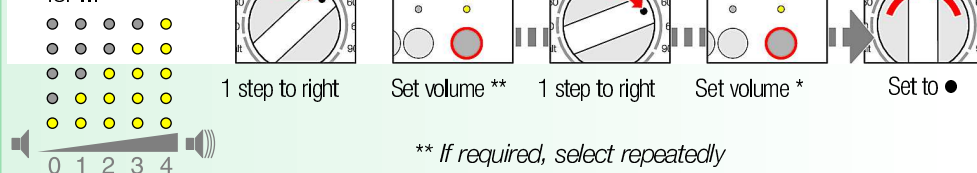


Blind mode\*  
ON-OFF  
Optional:



\* Long signal – function on. Short signal – function off.

### 2. Set volume for ...



\*\* If required, select repeatedly



# Important information



## Protecting the washing and the machine

- Empty pockets.
- Remove metal parts (paper clips, etc.).
- Wash delicates in the net/bag (tights, curtains, underwired bras).
- Close zips, button up covers.
- Brush sand out of pockets and collars.
- Remove curtain fittings or include in the net/bag.



## Before washing for the first time,

Do not put any washing in the washing machine! Turn on the tap, fill approx. 1 litre of water and then pour ½ measuring cup of detergent into dispenser II. Set the **Easy-Care 60 °C** programme and select **Start/Pause**. At the end of the programme set the programme selector to **Off**.



## Washing with different degrees of soiling

	Wash new items separately.
Light	Do not prewash. If required, pretreat stains. Select <b>Intensive</b> additional function.
heavy	Load less washing. Prewash. If required, pretreat stains. Select <b>Intensive</b> additional function.



## Soaking

*Load washing of the same colour*

Pour soaking agent/detergent into dispenser II according to the manufacturer's instructions. Set **Cottons 30 °C** programme and select **Start/Pause**. After approx. 10 minutes select **Start/Pause**. After the required soaking time reselect **Start/Pause**, if the programme is to be continued or change the programme.



## Starching

*Laundry must not be treated with fabric softener*

Starching is possible in all wash programmes if liquid starch is used. Add starch to the fabric softener compartment ☼ in accordance with the manufacturer's instructions.



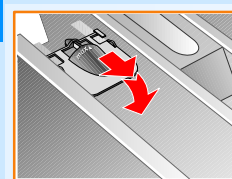
## Dyeing/bleaching

Dye in small quantities only. Salt can corrode stainless steel. Observe the dye manufacturer's specifications. Do **not** bleach laundry in the washing machine.



## Insert for liquid detergent

*depending on model*



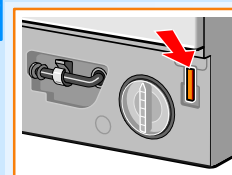
- Position insert for dispensing liquid detergent:
- Completely remove the detergent drawer → Page 9.
  - Push insert forwards.

Do not use insert (push up):

- for gelatinous detergents and washing powders;
- for programmes with **Prewash**.



## Emergency release, e.g. in the event of a power failure



The programme continues to run when the power has been restored. However, if the laundry has to be removed, the washing machine door can be opened as follows:



*Risk of scalding.  
The detergent solution and laundry may be hot.  
If possible, leave it to cool down.  
Do not reach into the drum if it is still rotating.  
Do not open the washing machine door if water can be seen through the glass.*

- Set the programme selector to **Off** and disconnect the mains plug.
- Drain the detergent solution → page 10.
- Pull the emergency release with a tool and release. The washing machine door can then be opened.

# Programme overview -> Pay attention to the Consumption values table on page 8 and the information on page 6.

Programmes	°C	max.	Type of washing	Additional functions; information
Cottons	30, 40, 60, 90 °C		Hard-wearing textiles, heat-resistant textiles made of cotton or linen	Intensive, Prewash, Less Ironing, Extra Rinse
Stains	60 °C	7.0 kg*		
Easy-Care	30, 40, 60 °C		Easy-care textiles made of cotton, linen, synthetic fibres or blended fabrics	Intensive, Prewash, Less Ironing, Extra Rinse
Mix	30 °C	3.5 kg*	Textiles made of cotton and easy-care textiles	Intensive, Prewash, Less Ironing, Extra Rinse; different types of washing can be washed together
Delicates	30 °C		For delicate, washable textiles, eg. made of silk, satin, synthetic fibres or blended fabrics (e.g. curtains)	Intensive, Prewash, Less Ironing, Extra Rinse; only short spin between the rinse cycles
Wool	cold, 30 °C	2.0 kg	Hand or machine washable wool or rich-wool textiles	Particularly gentle wash programme to avoid shrinkage, longer programme breaks (fabrics rest in the detergent solution)
Additional programmes			Rinse, Spin, Drain	

**i** The programmes are time-controlled for lightly soiled textiles. If textiles are heavily soiled, reduce the load or select additional functions, e.g. **Intensive**. When washing the maximum load for programmes marked with \*, always select the **Intensive** additional function. Regardless of the type of washing, **Easy-Care 40 °C** with maximum spin speed is the best short programme for the job. Programmes without prewash – pour detergent into dispenser II, programmes with prewash – divide detergent between dispensers I and II.

9000 339 562 1111	W5420X0GB
----------------------	-----------



## Safety instructions

- Read and follow the operating and installation instructions and all other information enclosed with the washing machine.
  - Retain documents for subsequent use.
- Risk of electric shock**
- Never pull out the mains plug by tugging the power cord!
  - Never insert/pull out the mains plug with damp hands.
- Danger to life**
- Redundant appliances:
- Pull out the mains plug.
  - Sever the power cord and discard together with the plug.
  - Destroy the lock on the washing machine door. This will prevent children from locking themselves in and suffocating.
- Risk of suffocation**
- Keep packaging, plastic film and packaging parts out of the reach of children.
- Risk of poisoning**
- Risk of explosion**
- Keep detergents and care products out of the reach of children.
  - Caused by detergents containing solvents, e.g. stain remover/items of washing pretreated with solvent naphtha may result in an explosion after being loaded into the washing machine. Before hand thoroughly rinse items of washing by hand.
- Risk of injury**
- Washing machine door may become very hot.
  - Caution when draining hot detergent solution.
  - Do not climb on the washing machine.
  - Do not lean on the open washing machine door.
  - Do not touch the drum in case it is still spinning.

## Consumption values

Programme	Additional function	Load	Current**	Water**	Programme duration**
Cottons 30 °C*	Intensive	7,0 kg	0.55 kWh	75 l	2:12 h
Cottons 40 °C*	Intensive	7,0 kg	0.85 kWh	75 l	2:12 h
Cottons 60 °C*	Intensive	7,0 kg	1.50 kWh	75 l	2:12 h
Stains 60 °C*	Intensive	7,0 kg	1.19 kWh	49 l	2:19 h
Cottons 90 °C	Intensive	7,0 kg	2.51 kWh	90 l	2:12 h
Easy-Care 40 °C*	Intensive	3,5 kg	0.55 kWh	55 l	1:12 h
Easy-Care 40 °C* (also suitable as Short programme)	–	3,5 kg	0.54 kWh	55 l	0:45 h
Delicates 30 °C	–	2,0 kg	0.20 kWh	39 l	0:40 h
Wool cold	–	2,0 kg	0.08 kWh	47 l	0:36 h
Wool 30 °C	–	2,0 kg	0.20 kWh	47 l	0:36 h

\* Programme setting to be tested in accordance with European standard 60 456.

Note on comparative tests: test the test programme with maximum load, **Intensive** additional function selected, maximum spin speed.

A **short programme** which can be used for coloured items is **Easy-Care 40 °C**, without the **Intensive** additional function selected and set to maximum spin speed.

\*\* The values deviate from the indicated values depending on water pressure, water hardness, water inlet temperature, room temperature, type and amount of washing and degree of soiling, utilised detergent, fluctuations in the mains voltage and selected additional functions.

# Care



- Risk of electric shock! Pull out the mains plug!
- Risk of explosion! No solvents!



## Machine housing, control panel

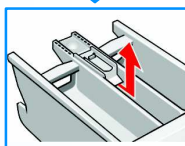
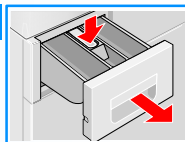
- Wipe with a soft, damp cloth.
- Do not use any abrasive cloths, sponges or cleaning agents (stainless-steel cleaner).
- Immediately remove washing and cleaning agent residue.
- Do not clean the appliance with a water jet.



## Clean the detergent drawer ...

... if it contains detergent or fabric softener residue.

1. Pull out, depress insert, completely remove. Remove insert: Press insert upwards with finger.
2. Clean detergent dispenser and insert with water and a brush and dry.
3. Attach insert and engage (connect cylinder to guide pin).
4. Insert detergent drawer.



Leave detergent drawer open so that residual water can evaporate.



## Drum

Leave washing machine door open so that the drum can dry out.  
Rust stains – use chlorine-free cleaning agent, not steel wool.



## Descaling No washing in the machine!

Not necessary if detergent dispensed correctly. However, follow the instructions of the descaler manufacturer.

# Information about the indicator lights

depending on model

A signal sounds and the spin speed indicator lamps and the status displays flash:

<p>Close the washing machine door properly; washing may be caught.</p>	<p>Turn on the tap, supply hose kinked/jammed; Clean filter → Page 10; water pressure too low.</p>	<p>Clean detergent solution pump → Page 10; outlet pipe/drainage hose blocked.</p>
<p>Water in the base pan, appliance leaking. Call customer service!</p>	<p>or</p> <p>or</p> <p>or</p>	<p>Motor fault. Call customer service!</p>

**Other displays:** Switch off the appliance, wait for 5 seconds and switch it back on.  
If the display appears again, call customer services → *Installation instructions, Page 7.*

# Maintenance



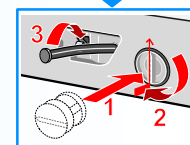
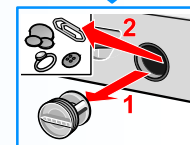
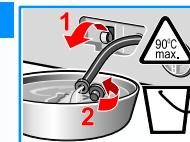
- Risk of scalding! Allow detergent solution to cool down!
- Turn off the tap!



## Detergent solution pump

Set programme selector to **Off**, pull out the mains plug.

1. Take the drainage hose out of the retainer. Remove the sealing cap, allow the detergent solution to flow out. Push the sealing cap back on.
2. Carefully unscrew the pump cover (residual water).
3. Clean the interior, pump cover thread and pump housing (fan impeller in the detergent solution pump must rotate).
4. Re-insert pump cover and screw on tight, handle is upright. Insert the drain hose into the holder.



To prevent unused detergent from flowing into the outlet during the next wash: Pour 1 litre of water into dispenser II and start the **Drain** programme.



## Filter in the water inlet hose



**Risk of electric shock!** Do not immerse Aqua-Stop safety device in water (contains electric valve).

Release water pressure in the supply hose:

1. Turn off the tap!
2. Select any programme (**except** Spin/Drain).
3. Select ◊ Start/Pause. Leave programme for approx. 40 seconds.
4. Set programme selector to **Off**. Pull out the mains plug.

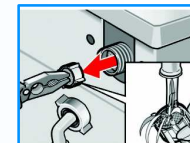
Clean filter:

1. Depending on model:
  - Remove hose from tap. Clean filter with small brush.



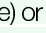
or

- Remove hose from the rear. Remove filter with pliers and clean.



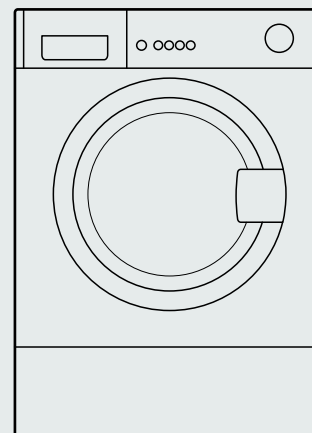
2. Connect the hose and check for leaks.

# What to do if ...

Water is running out.	<ul style="list-style-type: none"> <li>– Correctly attach/replace drainage hose.</li> <li>– Tighten screw-fitting on the supply hose.</li> </ul>
Water not flowing in. Detergent not washed in.	<ul style="list-style-type: none"> <li>– <b>Start/Pause</b> not selected?</li> <li>– Tap not open?</li> <li>– Filter blocked? Clean filter → Page 10.</li> <li>– Supply hose kinked or jammed?</li> </ul>
Washing machine door cannot be opened.	<ul style="list-style-type: none"> <li>– Safety function active. Programme stopped? → page 4.</li> <li>– <b>Rinse Hold</b> (Rinse stop = without final spin) selected? → Page 4.</li> <li>– Can be opened via emergency release only → Page 6.</li> </ul>
Programme does not start.	<ul style="list-style-type: none"> <li>– <b>Start/Pause</b> selected?</li> <li>– Washing machine door closed?</li> </ul>
Detergent solution is not drained.	<ul style="list-style-type: none"> <li>– Clean detergent solution pump → Page 10.</li> <li>– Clean outlet pipe and/or drainage hose.</li> </ul>
Water not visible in the drum.	<ul style="list-style-type: none"> <li>– Not a fault – water below the visible area.</li> </ul>
Spin result not satisfactory.	<ul style="list-style-type: none"> <li>– Wash small and large items of washing together.</li> <li>– <b>Less Ironing</b> selected? → Page 5.</li> <li>– Too low speed selected? → Page 3.</li> </ul>
Spin cycle actuated several times.	<ul style="list-style-type: none"> <li>– Not a fault – unbalanced load detection system adjusts imbalance.</li> </ul>
Dispenser ⌘ not completely rinsed out.	<ul style="list-style-type: none"> <li>– Remove the insert. Clean detergent drawer and insert → Page 9.</li> </ul>
Odour formation in the washing machine.	<ul style="list-style-type: none"> <li>– Run <b>Cottons 90 °C</b> programme without washing. Use standard detergent.</li> </ul>
Foam is coming out of the detergent drawer.	<ul style="list-style-type: none"> <li>– Too much detergent used? Mix 1 tablespoon of fabric conditioner with ½ litre of water and pour into dispenser II in the detergent drawer.</li> <li>– Reduce detergent dosage for the next wash cycle.</li> </ul>
Intense noise formation, vibrations and "wandering" during spin cycle.	<ul style="list-style-type: none"> <li>– Appliance feet fixed? Secure appliance feet → <i>Installation instructions, Page 5.</i></li> <li>– Transportation safety devices removed? Remove transportation protection devices → <i>Installation instructions, Page 4.</i></li> </ul>
Indicator lights do not function while the appliance is running.	<ul style="list-style-type: none"> <li>– Power failure?</li> <li>– Fuse tripped? Switch on/replace fuse.</li> <li>– If the fault occurs repeatedly, call customer service.</li> </ul>
Programme progress longer than usual.	<ul style="list-style-type: none"> <li>– Not a fault – unbalanced load detection system adjusts imbalance by repeatedly distributing the washing.</li> <li>– Not a fault – foam detection system active – a rinse cycle is started.</li> </ul>
Detergent residue on the washing.	<ul style="list-style-type: none"> <li>– Occasionally phosphate-free detergents contain water-insoluble residue.</li> <li>– Select  (Rinse) or brush the laundry after washing.</li> </ul>
In the pause state <b>Start/Pause</b> flashes very quickly and a signal sounds.	<ul style="list-style-type: none"> <li>– Water level too high. Top up washing is not possible. If required, close door immediately.</li> <li>– Select "Start/Pause" to continue the programme.</li> </ul>
If a fault cannot be rectified or a repair is required:	<ul style="list-style-type: none"> <li>– Set programme selector to <b>Off</b> and pull out the mains plug.</li> <li>– Turn off tap and call customer service → <i>Installation instructions, Page 7.</i></li> </ul>

## Operating instructions

en



Washing machine



Read these instructions before switching on the washing machine!  
Also follow the separate Installation instructions.  
Follow the safety instructions on page 11!

