



Brief and handy:
everything your dishwasher
needs ...

**Before using for the first
time, read the operating
instructions!**

1

Adjusting the water softening system*

Read off the correct setting for your water hardness ...

°dH	°fH	°Clarke	mmol/l	
0-6	0-11	0-8	0-1,1	0
7-8	12-15	9-10	1,2-1,4	1
9-10	16-17	11-12	1,5-1,8	2
11-12	18-21	13-15	1,9-2,1	3
13-16	22-29	16-20	2,2-2,9	4
17-21	30-37	21-26	3,0-3,7	5
22-30	38-54	27-38	3,8-5,4	6
31-50	55-89	39-62	5,5-8,9	7

* only **before the first wash**
or if the **water hardness**
has been changed



Quickly sorted ...

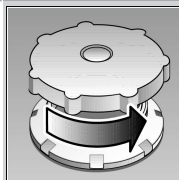
How to adjust the water softening system

- Rotate the programme button from the 12 o'clock position by one notch to the left.
- Switch on the main switch and hold down for at least 3 seconds. The digital display indicates the current set hardness value (factory setting 4).
- Change the set value by rotating the programme selector (0–7).
- Switch off the main switch. The set value is saved.

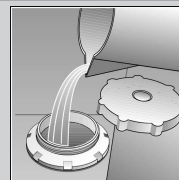
2

Filling the salt dispenser

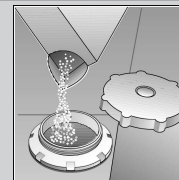
Dissolves limescale (not required for set value 0!)



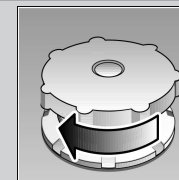
Unscrew
the lid.



**Only before using
the dishwasher
for the first time
pour approx. 1 l /
1 1/4 pt water into
the salt opening.**



Pour in max.
1.5 kg / 3 lb 5 oz
salt (never deter-
gent!)

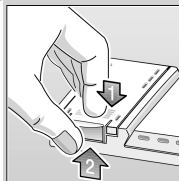


Screw on the
lid. Switch on
dishwasher
immediately.

3

Adding rinse aid

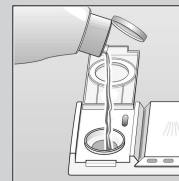
Everything is sparkling clean ...



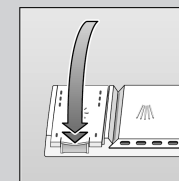
Press mark 1,
lift up lid 2.



Refill whenever level indicator is light!



Pour in
rinse aid.

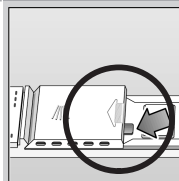


Close the
lid. **CLICK!**

4

Adding detergent

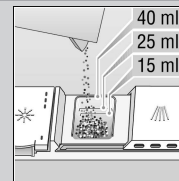
Very dirty dishes, a lot of detergent ...



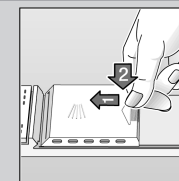
If required, open
the lid (press the
pin).



Warning,
combination
products are not
suitable for all
programmes,
follow manufac-
turer's instructions.



Pour in
detergent.



Push the lid
shut, press.
PLOP!

6

Select programme

Quick, economical or intensive ...

Overview of programmes

This overview indicates the max. possible number of
programmes. The programmes which correspond to your
appliance can be found on your appliance fascia.

The programme data are values measured in the
laboratory in compliance with Standard EN 50242.
Deviations in practice are possible.

	Intensive 70°	Normal 65°	Eco 50°	Gentle 40°	Quick 45°	Prerinse
Duration in minutes	138	140	140	75	30	19
Power consumption in kWh	1,65	1,40	1,05	0,90	0,80	0,05
Water consumption in litres	16	14	13	14	10	4,0

7

Switch on the appliance Here we go ...

Press main switch, running time of the selected
programme is indicated.

9

Switch off the appliance Everything o.k. ...

When the display is on 0 (end of programme), press
the main switch.

8

Additional programmes **

Flexibility ...



Time selection

...switches on as soon as
you press the time
selection button:
Alters the programme
start in hourly steps



Saving time (VarioSpeed)

... is obtained by increased
energy consumption at
a constant cleaning and
drying performance.



Half load

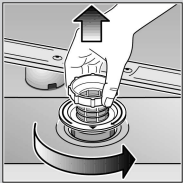
... for a few items, saves
water, energy and time

** some models

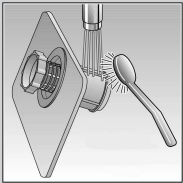
Maintenance and care

Filters

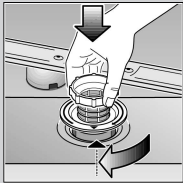
Check and, if required, clean:



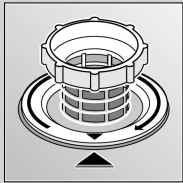
Rotate filter cylinder, remove filter system



Rinse under running water



Insert

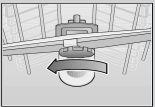
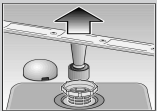


Screw on filter system. NOTE MARK!

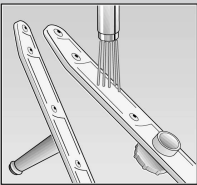
Spray arms

Remove blockages/deposits

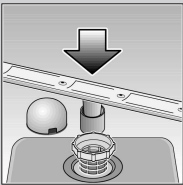
Pull up lower arm



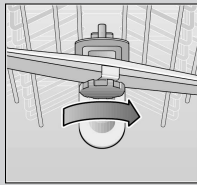
Unscrew upper arm



Clean under running water (if required, use a toothpick)



Insert lower arm



Screw on upper arm

Rectifying minor faults yourself ...

... as it is worth doing it yourself!

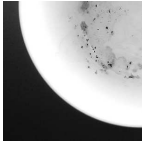
Fault	Possible causes	Remedial action
"Check water supply" display lights up	Supply fitting jammed or calcified	<ul style="list-style-type: none">▶ Open supply fitting.▶ 1. Unscrew water connection.▶ 2. Clean filter in the water connection.▶ 3. Flow rate must be min. 9 l/min. when water supply is open.▶ If the flow rate is less, replace the supply fitting.▶ Install supply hose without kinks.
Residual water in the appliance and "Check water supply" display lights up	Waste water pump blocked	<ul style="list-style-type: none">▶ Clean waste-water pump (see above).
	The programme has not yet ended	<ul style="list-style-type: none">▶ Close and switch on the appliance or terminate the programme (see Terminating the programme).
	Waste water hose is blocked or kinked	<ul style="list-style-type: none">▶ Install waste water hose without kinks.
Plastic/utensils discoloured	Too little detergent	<ul style="list-style-type: none">▶ Follow manufacturer's instructions (detergent).
	Discoloration caused by food colourings (tomato sauce)	<ul style="list-style-type: none">▶ Discoloration is harmless; subsequent rinse cycles will cause it to fade.
Rust on the cutlery	Cutlery not rust-resistant	<ul style="list-style-type: none">▶ Use dishwasher-proof cutlery.
	Hard knife blades are more susceptible	
	Extraneous rust	<ul style="list-style-type: none">▶ Never wash rusting parts in the appliance.

Fault

Possible causes

Remedial action

Utensils are not clean
Sand or gritty residue on the utensils



Utensils are situated close together or one above the other

Too little detergent

Unsuitable programme selected

Spray arm nozzles blocked

Filters dirty, not seated firmly

Spray arms blocked

▶ Separate the utensils, prevent contact points.

▶ Follow manufacturer's instructions (detergent).

▶ Select a more intensive programme.

▶ Clean the spray arms (see above).

▶ Clean the filters (see above).

▶ Arrange the utensils so that the spray arms can rotate freely.

Stains and streaks

Rinse-aid dosage too high/too low

▶ Streaks: reduce dosage.

▶ Water or limescale stains: increase dosage.

Milky deposits on the utensils (can be removed)

Water softening system incorrectly set;

No salt

▶ Correctly set water softening system.

▶ Refill with salt.

Milky deposits, glasses cloudy/tarnished (cannot be removed)

Glasses not dishwasher-proof

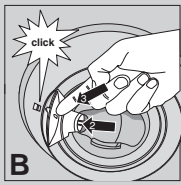
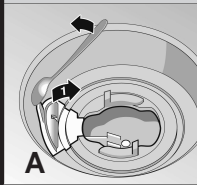
▶ Use dishwasher-proof glasses.

▶ Use a detergent suitable for glasses.

Waste water pump *

* some models

- Set main switch to OFF
- Scoop out any water
- Remove the filters
- Remove the cover (⇒A)
- Check the inner compartment for foreign objects and, if required, remove foreign objects
- Re-insert the cover (⇒B)
- Re-insert the filters and screw into position



More information can be found in the operating instructions

Interrupting the programme ...

Terminating the programme ...

- Switch off the main switch.
- To continue, close the door. Switch on the main switch again.

- While the programme is running, rotate the programme selector to the Reset pos. After approx. 3 seconds the digital display indicates 0.
- The programme sequence lasts approx. 1 min.
- When the programme has run, switch off the main switch.

Loading the dishwasher correctly ...

Dishwasher-proof utensils (not soiled with ash, wax, lubricating grease, ink or adhesive labels; remove large remnants of jam, milk products and food according to the operating instructions and check that the spray arms can rotate freely).