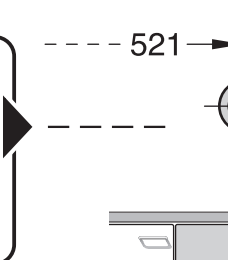
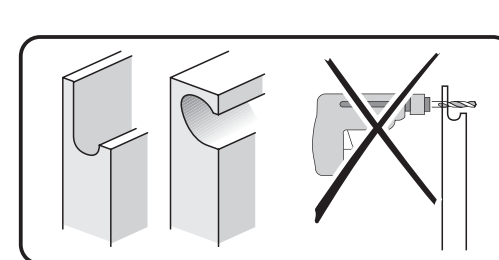
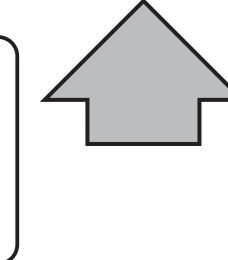
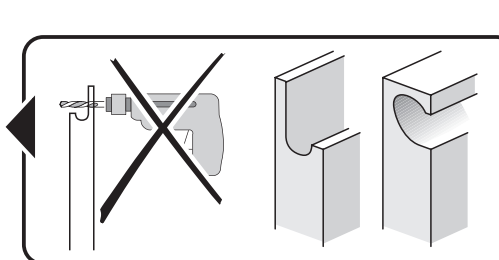
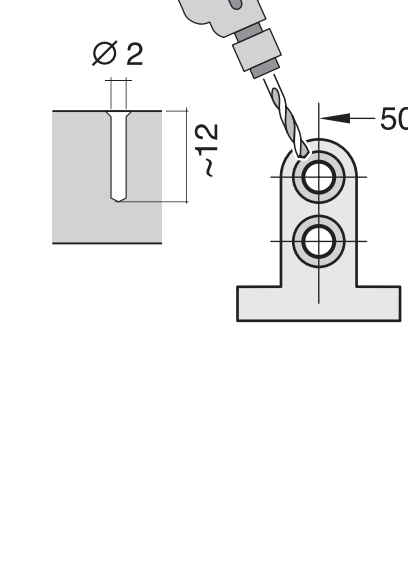
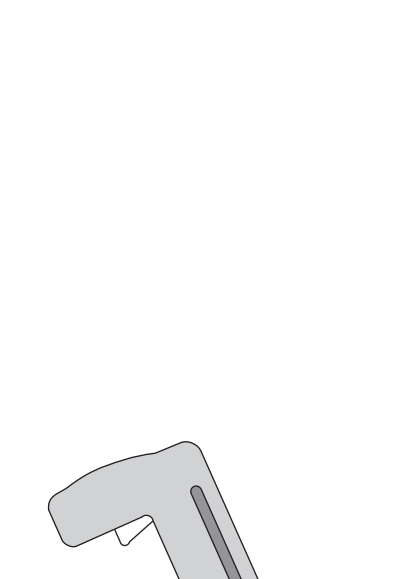
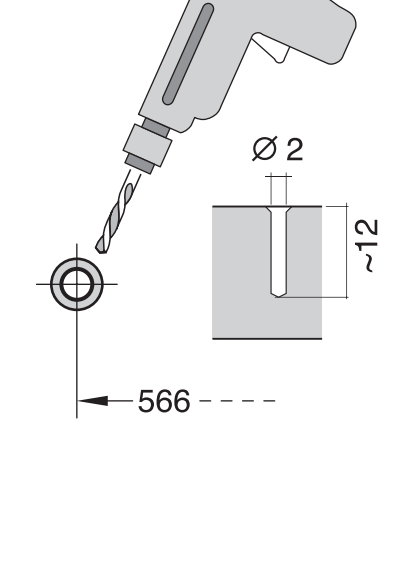
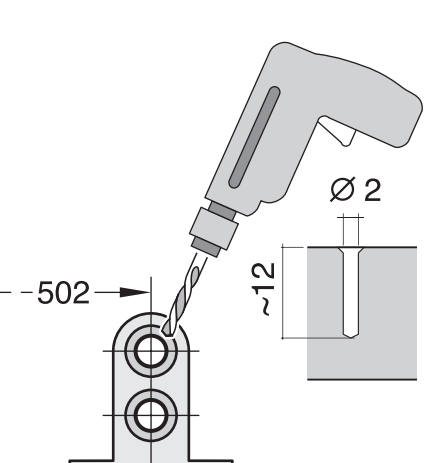
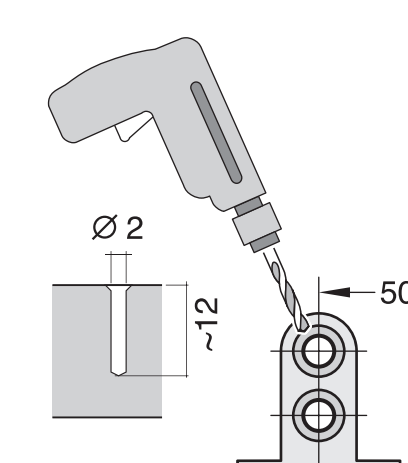
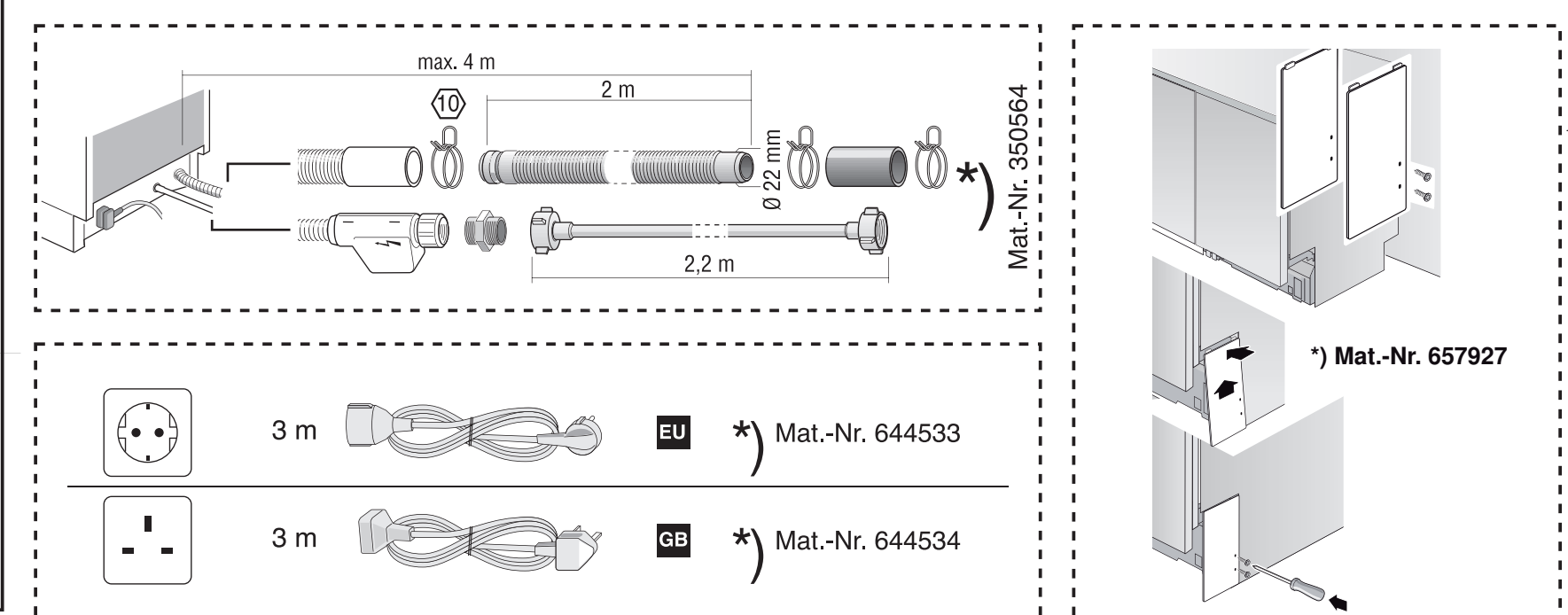
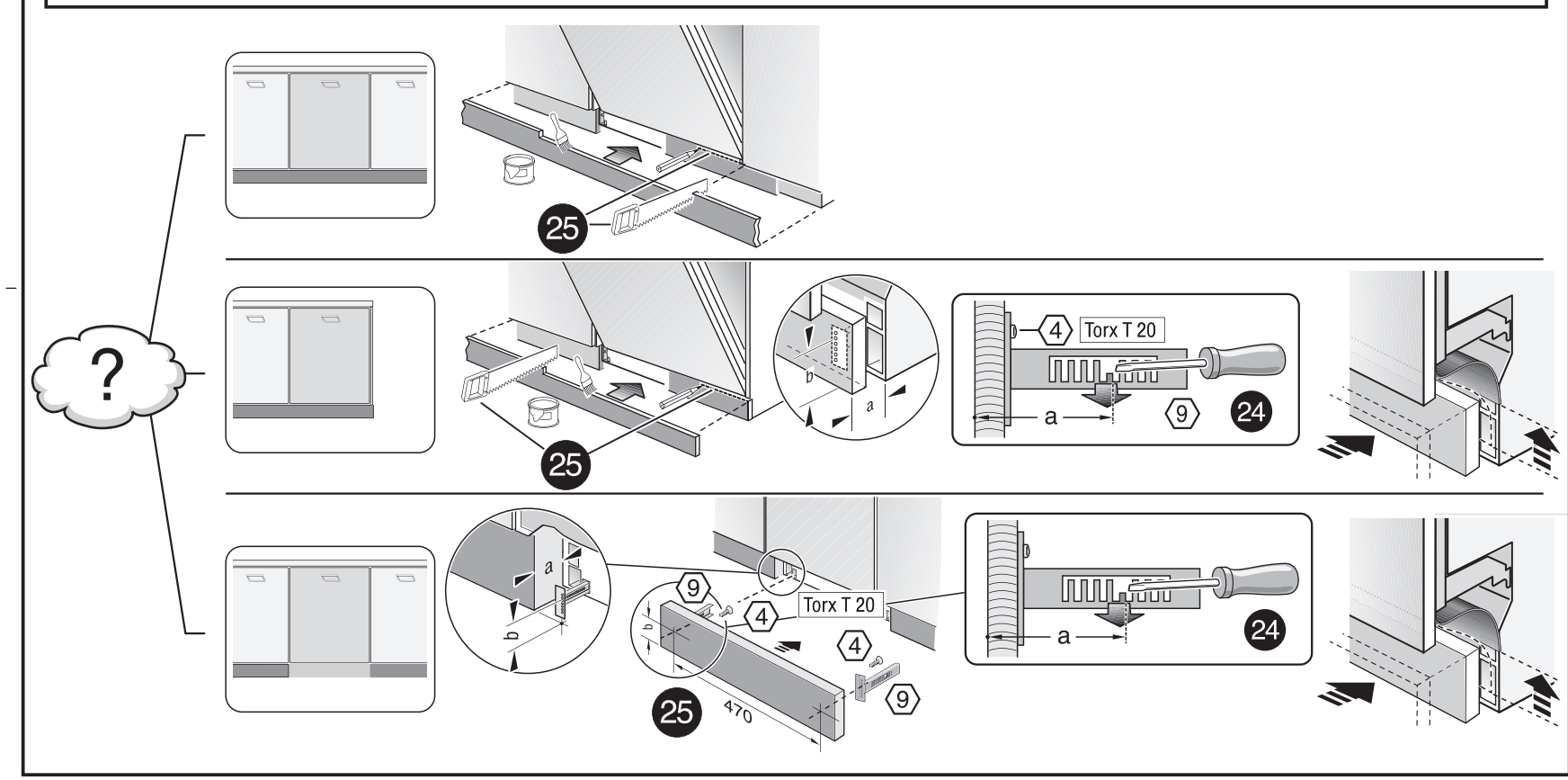
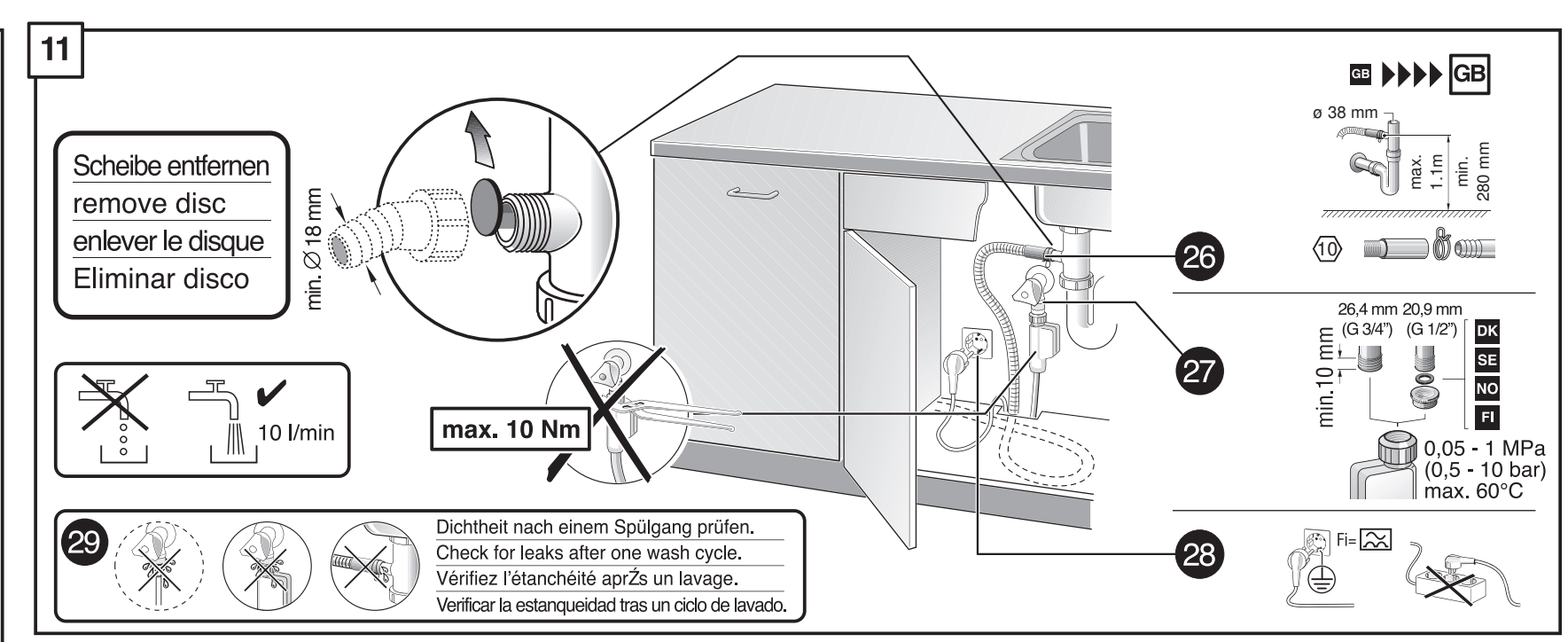
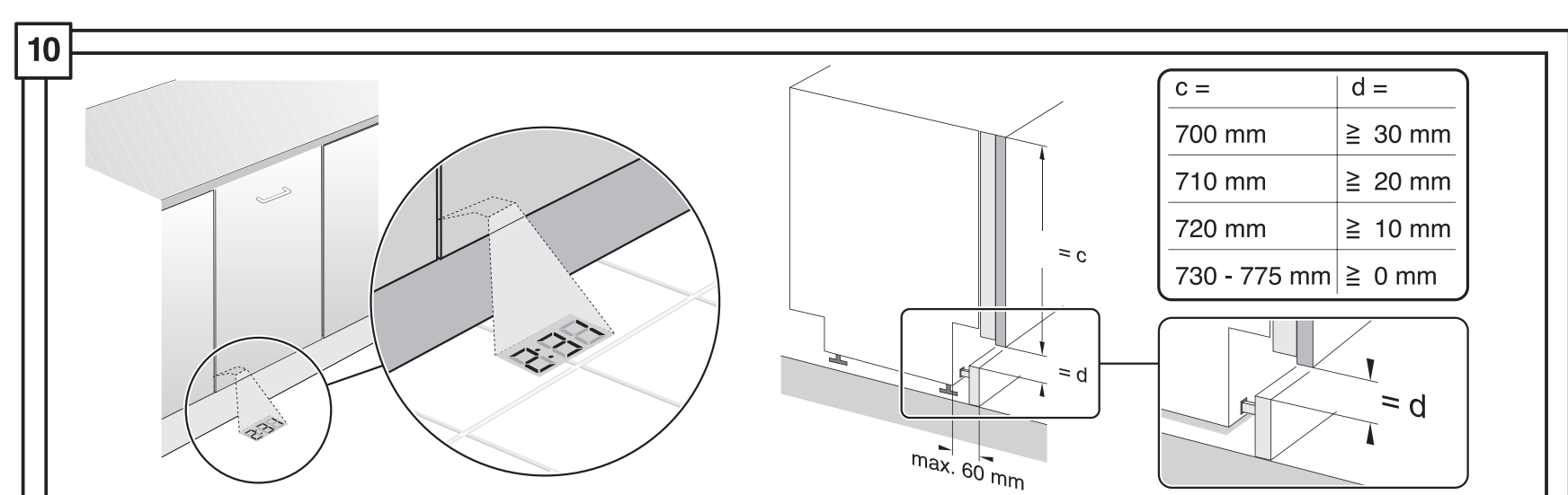
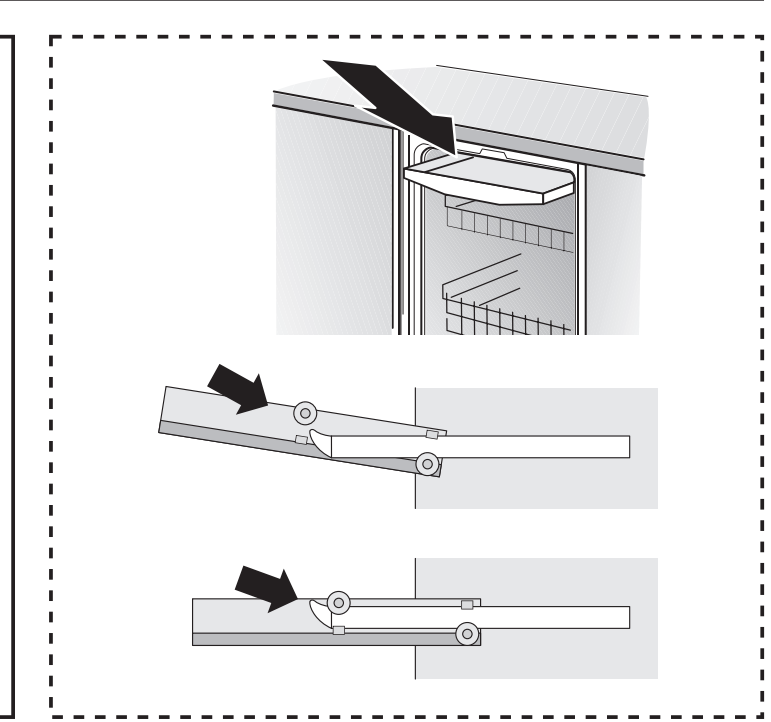
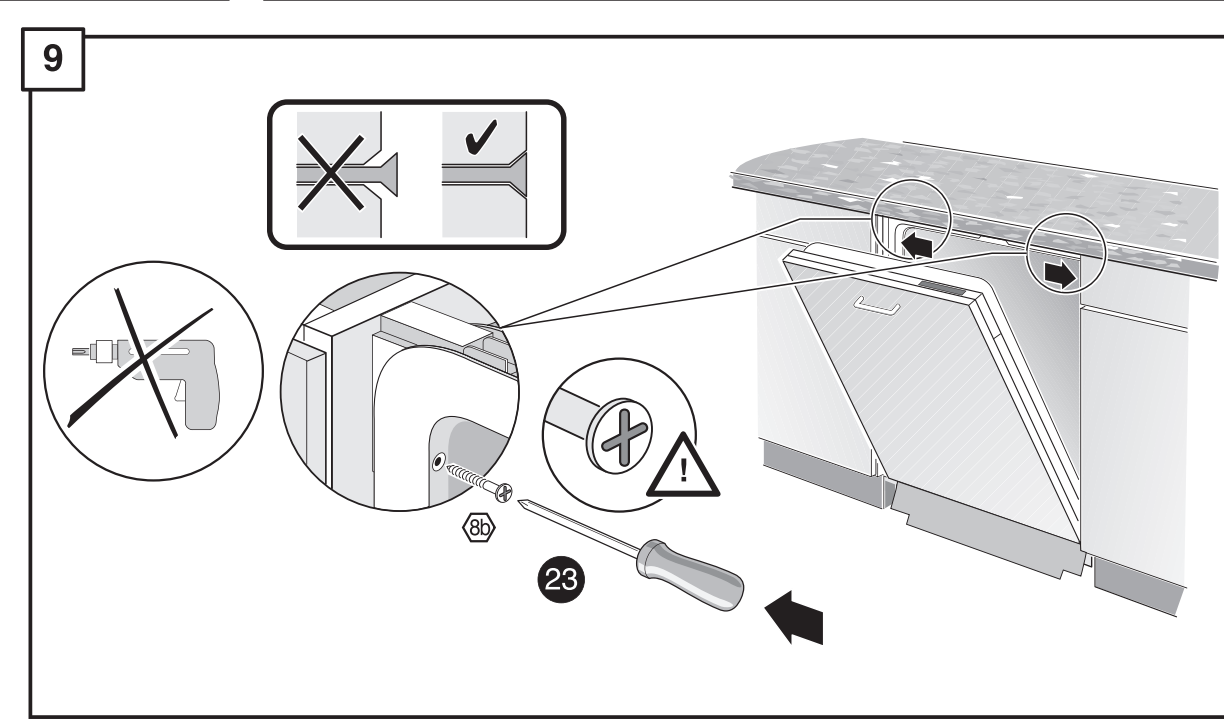
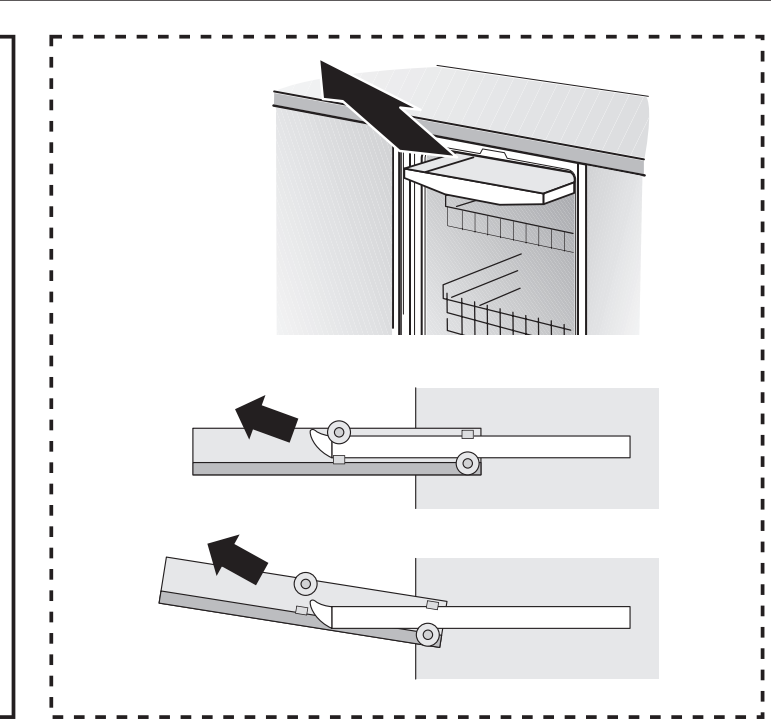
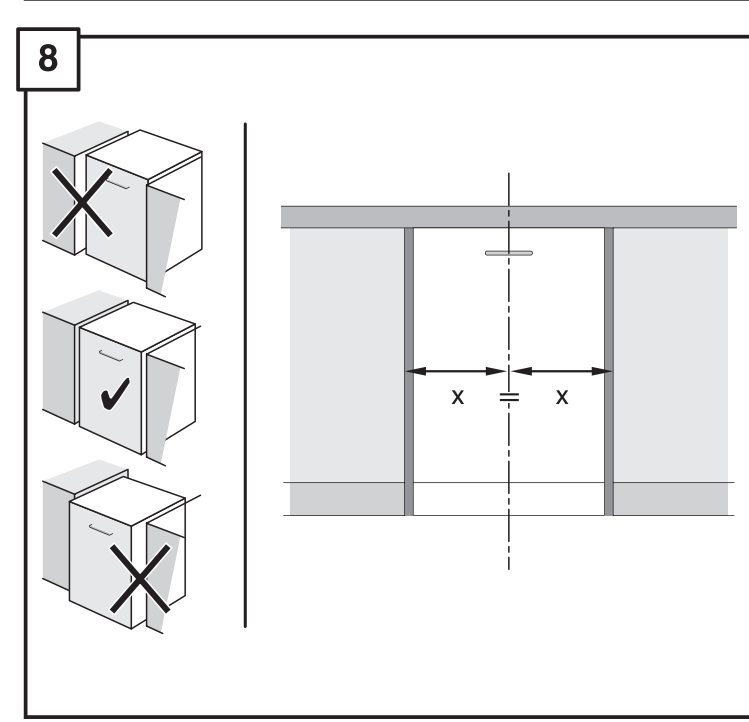
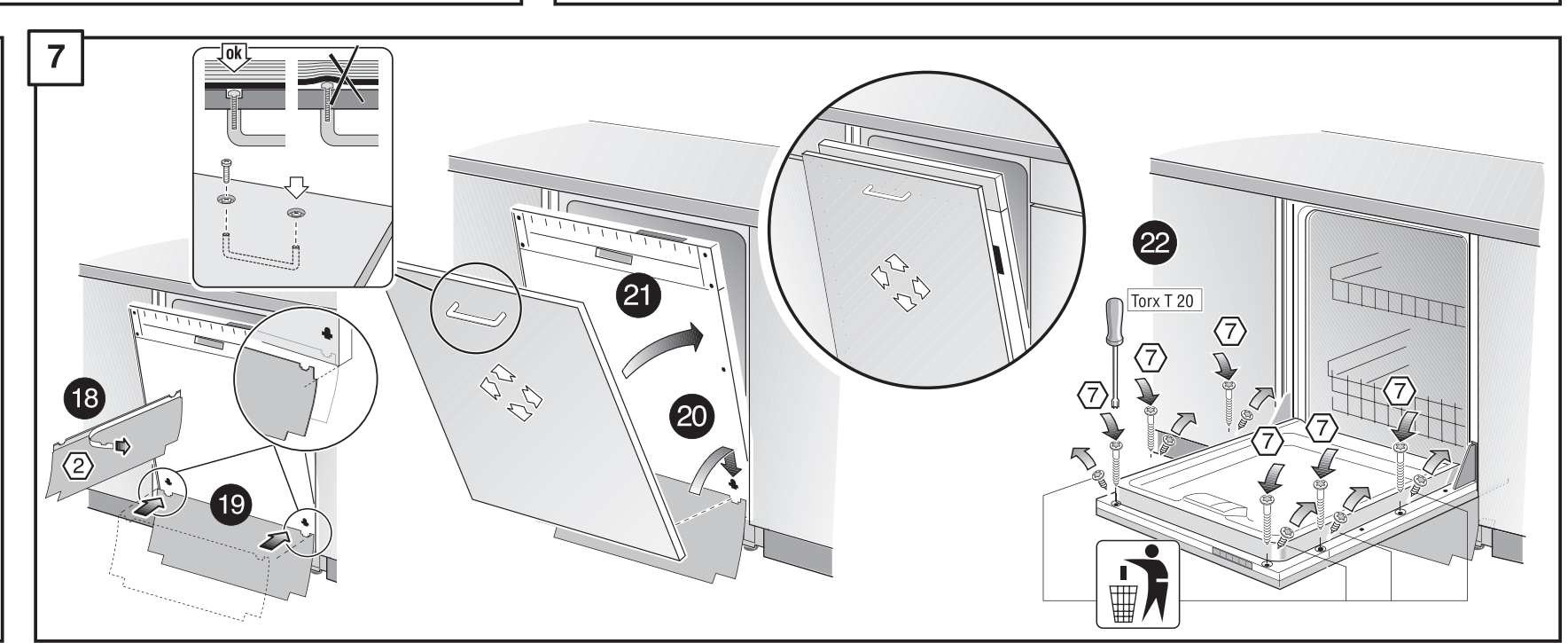
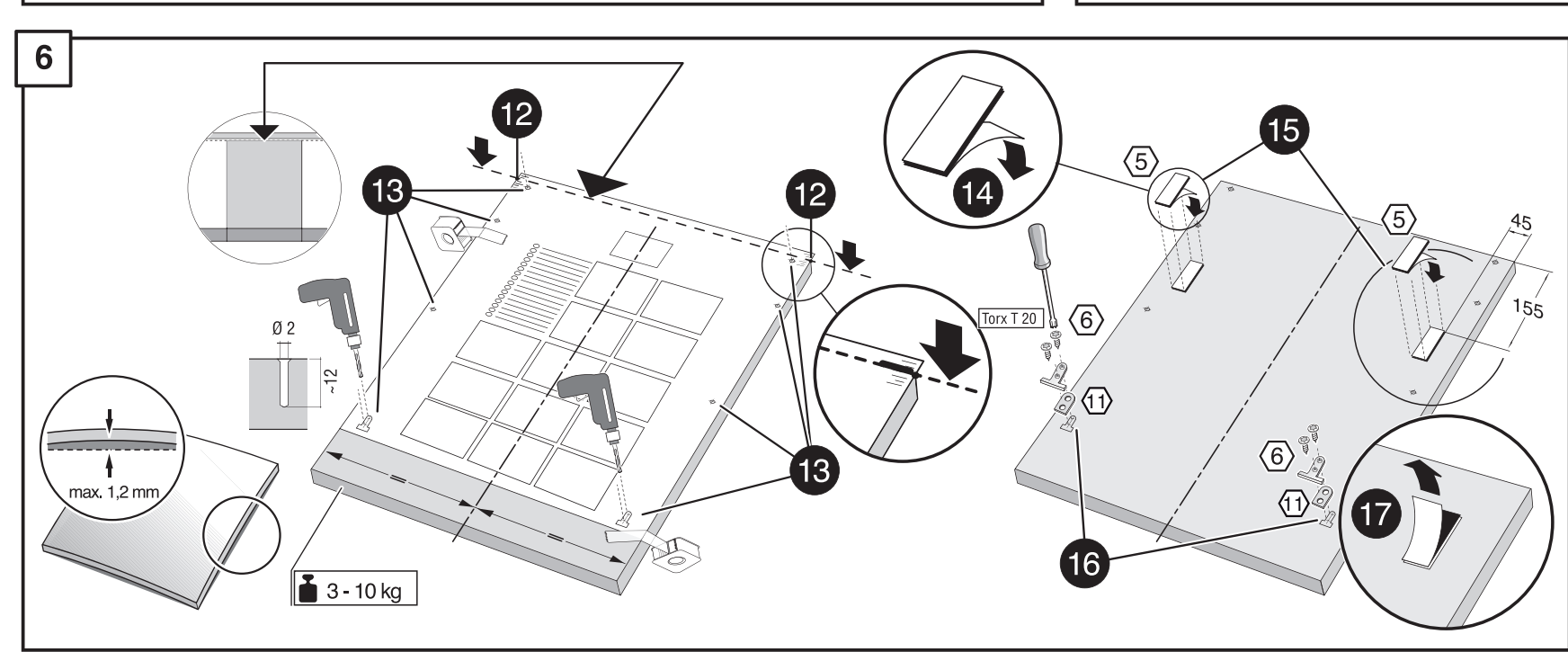
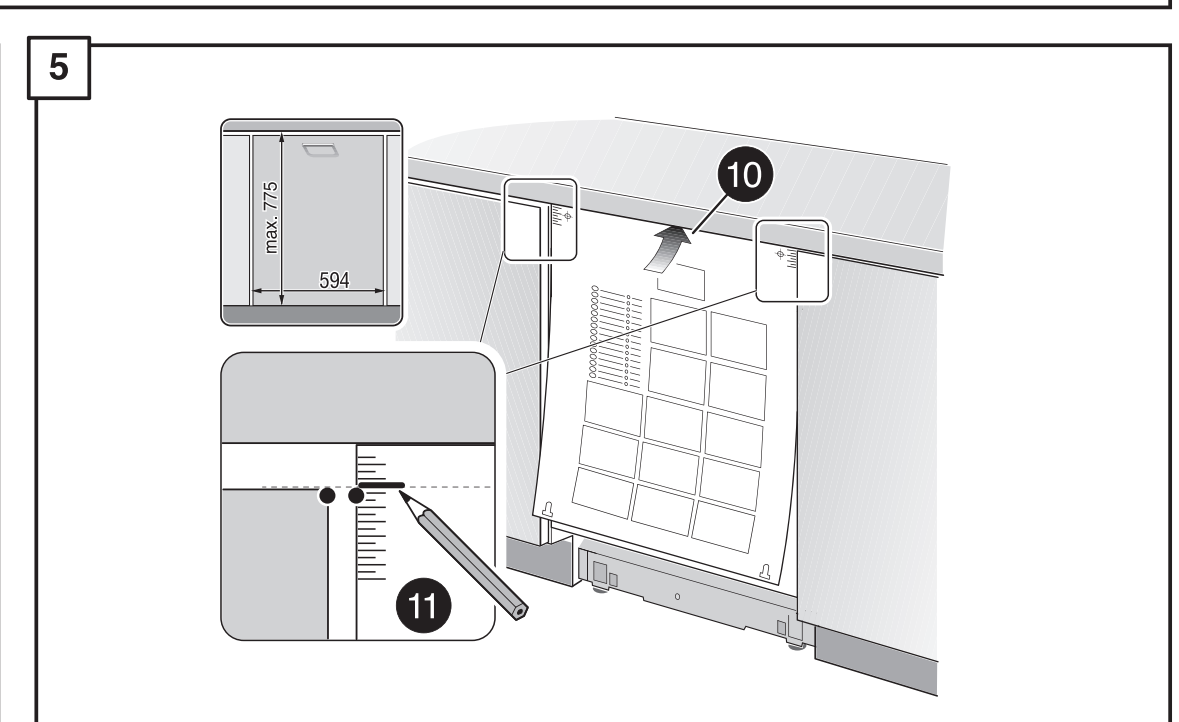
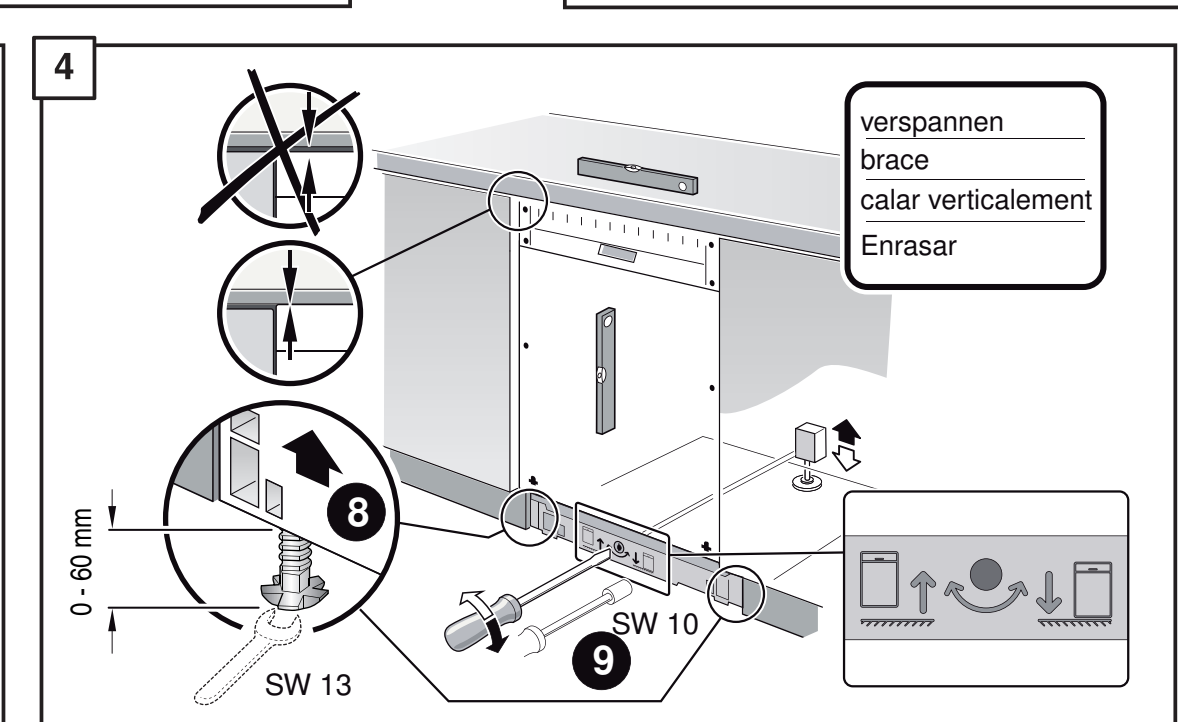
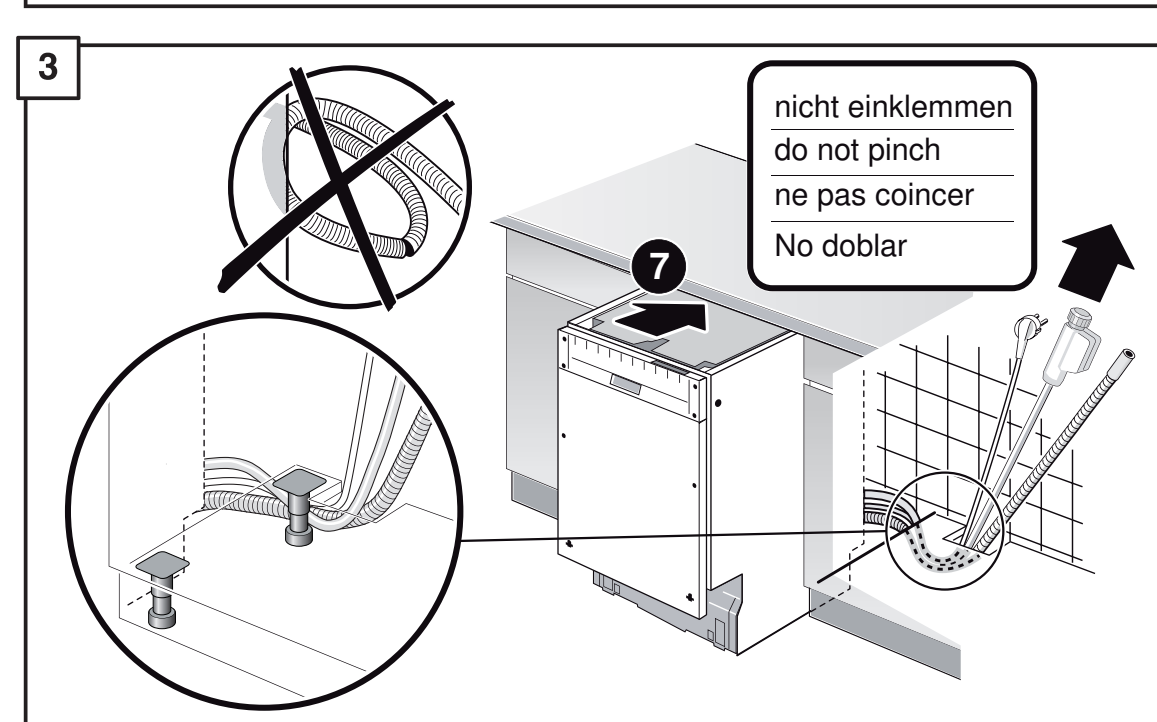
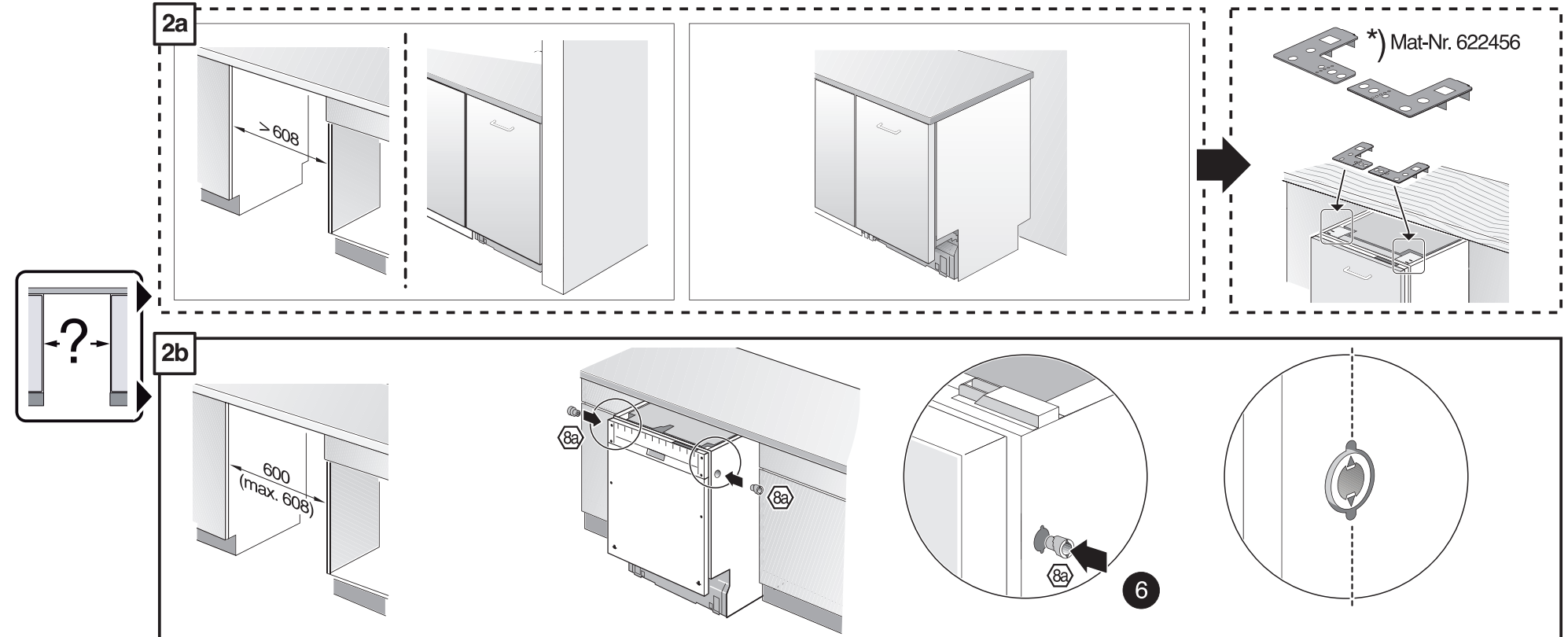
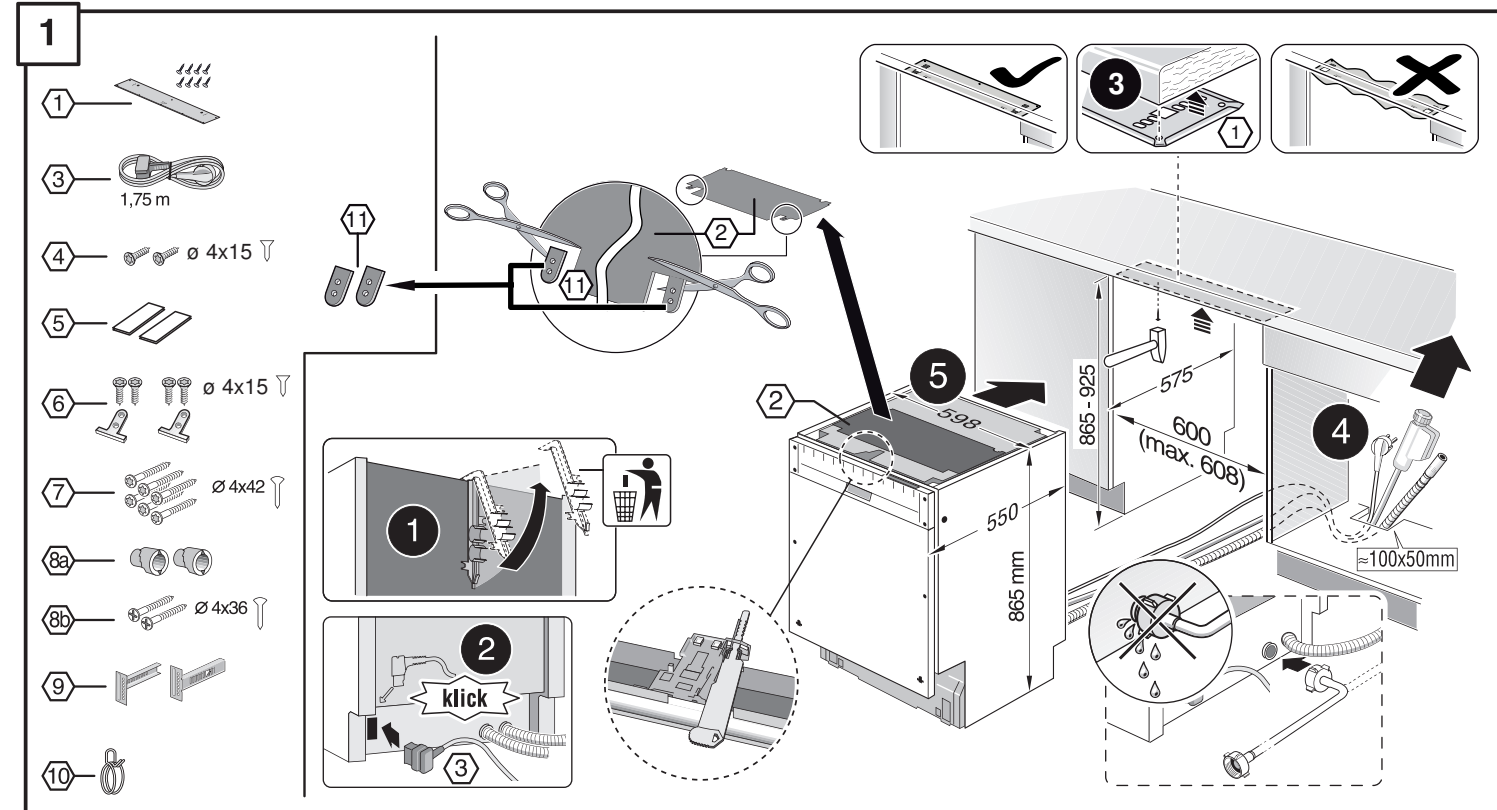
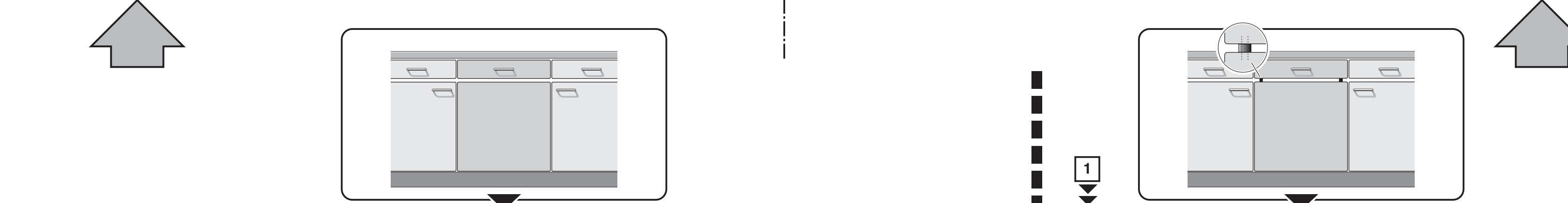
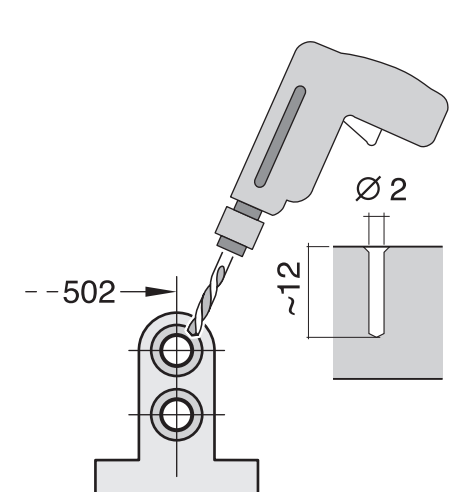
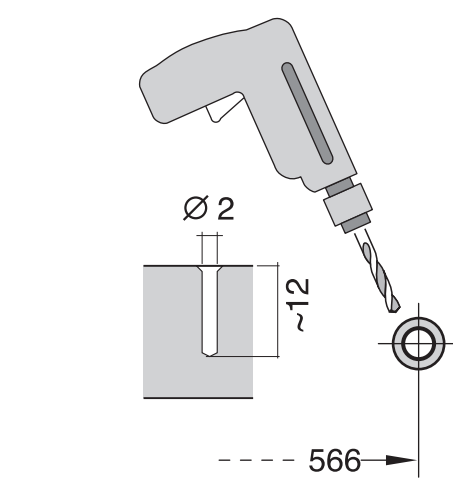
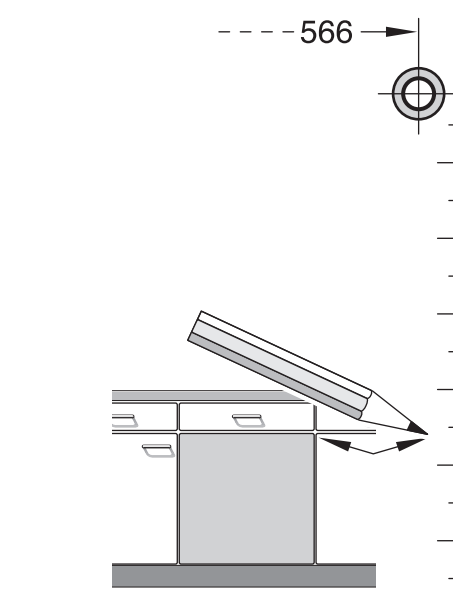
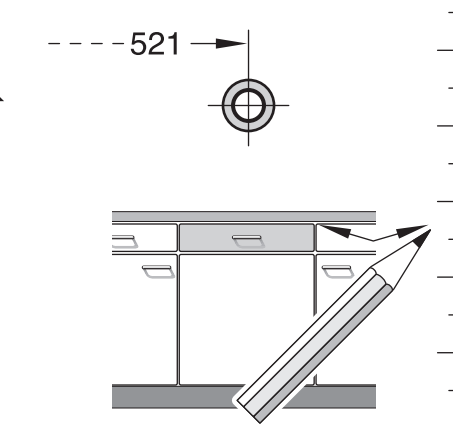
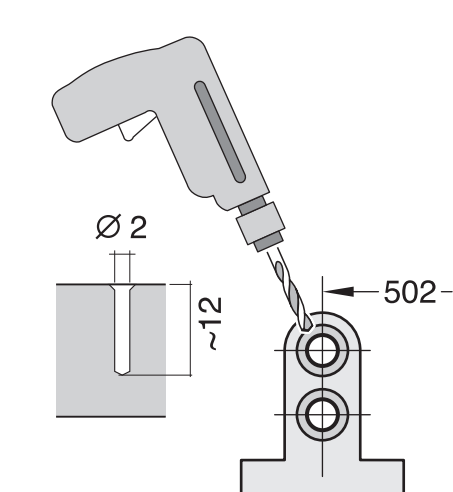
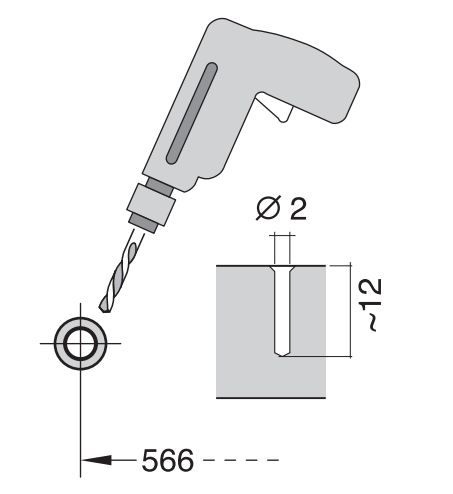
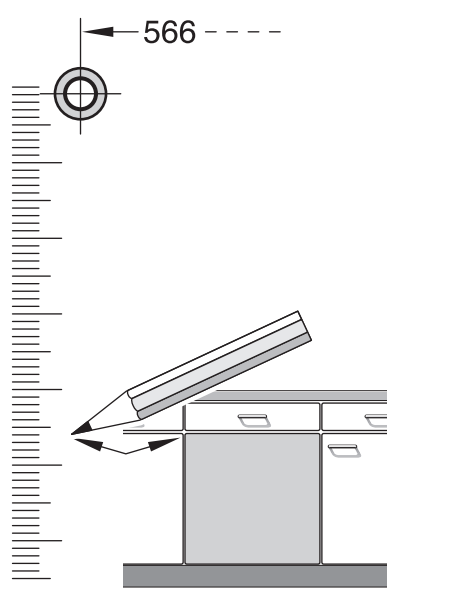
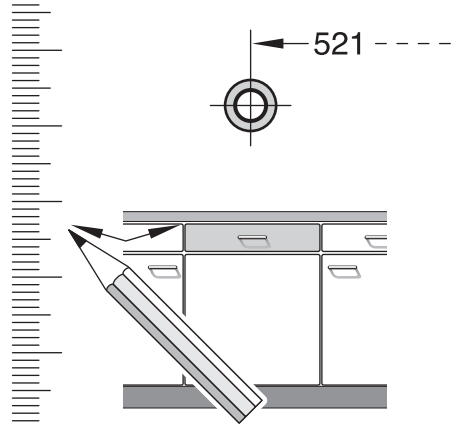


GV 640 Voll-I - 86,5 cm - m. GS
9001 170 329 (9801)



- de** Montageanleitung
*) über Kundendienst erhältlich
- en** Installation instructions
*) Available from customer service
- fr** Notice de montage
*) Disponible par le biais du service après-vente
- nl** Montagevoorschrift
*) Tegen meerprijs bij de Servicedienst verkrijgbaar
- it** Istruzioni per il montaggio
*) Disponibile presso il servizio assistenza clienti
- es** Instrucciones de montaje
*) Se puede adquirir a través del Servicio de Asistencia Técnica Oficial de la marca
- pt** Instruções de montagem
*) Pode ser adquirido nos nossos Serviços Técnicos
- el** Οδηγίες τοποθέτησης
*) Διαθέσιμα από την υπηρεσία τεχνικής εξυπηρέτησης πελατών
- tr** Montaj kılavuzu
*) Yetkili servis üzerinden alınabilir
- sv** Monteringsanvisning
*) kan fås via Service
- no** Monteringsanvisning
*) fås hos kundeservice
- da** Monteringsvejledning
*) Kan købes hos serviceafdelingen
- fi** Asennusohje
*) Saatavissa huolopalvelusta
- cs** Montážní návod
*) K dispozici přes servisní službu
- sk** Návod na montáž
*) Dostanete v službe zákazníkom
- pl** Instrukcja montażu
*) Do uzyskania w punkcie serwisowym
- hu** Szerelési utasítás
*) A vévőszolgálaton keresztül kapható:
- ro** Instrucțiune de montaj
*) obținabilă la serviciul pentru clienți
- ru** Инструкция по монтажу
*) Можно получить через сервисную службу
- uk** Інструкція з монтажу
*) Можна отримати через сервісну службу
- az** Quraqlırma taimatları
*) Müştəri xidmətindən əldə oluna bilər
- uz** O'rnatish yo'riqnomasi
*) Lohko nabavite v servisni sluzbi
- kk** Үнатство за монтажа
*) Се добыва преку службата за кулувачи
- lv** Udhēznes pār montāžu
*) Iegūstama pie servisa centra
- lt** Montavimo instrukcija
*) Ją galima gauti klientų aptarnavimo servise
- id** Montážas pamáclba
*) Var sapesti servisa dienestā
- th** คู่มือการติดตั้ง
*) สามารถขอรับได้จากศูนย์บริการลูกค้า
- vi** Hướng dẫn lắp đặt
*) Có thể nhận được thông qua trung tâm dịch vụ khách hàng
- zh-CN** 安装说明书
*) 可向售后服务站索取
- zh-TW** 安裝說明書
*) 可向售後服務站索取





1

1
2
3
4
5
6
7
8
9
10

1.75 m
Ø 4x15
Ø 4x15
Ø 4x15
Ø 4x15
Ø 4x15
Ø 4x15
Ø 4x15
Ø 4x15
Ø 4x15
Ø 4x15

Mat-Nr. 622456

2a

2b

Mat-Nr. 622456

3

nicht einklemmen
do not pinch
ne pas coincer
No doblar

4

verspannen
brace
calar verticalement
Enrascar

0-80 mm
SW 13

5

max. 775
594

6

14 Torx T 20

7

max. 1.2 mm

3-10 kg

1

4

5A

6A

7A

8

11

max. 775
594

3-10 kg

max. 1.2 mm

14 Torx T 20

15
16
17
18
19
20
21
22
23
24
25
26

8

11

8

9

max. 10 Nm

9

max. 10 Nm

9

max. 10 Nm

10

c =	d =
700 mm	≥ 30 mm
710 mm	≥ 20 mm
720 mm	≥ 10 mm
730 - 775 mm	≥ 0 mm

max. 60 mm

Mat-Nr. 350564

Mat-Nr. 657927

11

Scheibe entfernen
remove disc
enlever le disque
Eliminar disco

max. 10 Nm

Dichtheit nach einem Spülgang prüfen.
Check for leaks after one wash cycle.
Vérifier l'étanchéité après un lavage.
Verificar la estanqueidad tras un ciclo de lavado.

0.05 - 1 MPa
(0.5 - 10 bar)
max. 60°C

11

max. 4 m

2 m

0.22 mm

2.2 m

Mat-Nr. 350564

Mat-Nr. 657927

3 m EU *) Mat-Nr. 644533

3 m GB *) Mat-Nr. 644534