

N 50, INTEGRATED RANGEHOOD, 52 CM,  
STAINLESS STEEL  
D55MH56N0A



Z5135X1	Standard odor filter (replacement)
Z5135X3	Standard recirculation kit
Z51ITD1X1	Long Life recirculation kit external
Z51ITP0X0	Long Life odor filter (replacement)
Z51IXB1X6	Clean Air Plus odor filter (replacement)
Z51IXC1X6	Clean Air Plus recirc. kit external

- ✓ Intensive Speed Setting: Increases the extraction rate when cooking steam is intense.
- ✓ LED Lighting: Clear illumination while you cook.

Typology: ..... Built-in/Built-under  
Length electrical supply cord: ..... 150.0 cm  
Min. required niche size for installation (HxWxD): ..... 418mm x 496.0mm x 264mm mm  
Minimum distance above an electric cooktop: ..... 600 mm  
Minimum distance above a gas cooktop: ..... 650 mm  
Net weight: ..... 9.0 kg  
Type of control: ..... Electronic  
Number of power settings: ..... 3-stages + intensive setting  
Maximum output air extraction: ..... 575 m³/h  
Boost position output recirculating: ..... 606 m³/h  
Maximum output recirculating air: ..... 541 m³/h  
Boost position air extraction: ..... 650 m³/h  
Number of lights: ..... 2  
Noise level: ..... 67 dB(A) re 1 pW  
Diameter of air outlet: ..... 120 / 150 mm  
Grease filter material: ..... Washable aluminium  
EAN code: ..... 4242004273554  
Connection Rating: ..... 277 W  
Fuse protection: ..... 3 A  
Voltage: ..... 220-240 V  
Frequency: ..... 50 Hz  
Plug type: ..... AU plug  
Installation typology: ..... Built-in



N 50, INTEGRATED RANGEHOOD, 52 CM,  
STAINLESS STEEL  
D55MH56N0A

#### Design & Innovation

- For installation in a kitchen cabinet
- Appliance colour: brushed steel
- Rim ventilation
- metal grease filters with stainless steel cover
- Suitable for ducted extraction and recirculation
- Accessories required for recirculated extraction: Recirculating kit

#### Features

- Push button controls (3 power levels plus intensive setting) with Electronic display
- Automatic intensive revert setting - 6 min
- Dishwasher safe metal grease filters
- 2 x 1 Watt LED lights
- Light Intensity: 244 lux
- Colour Temperature: 4000 K

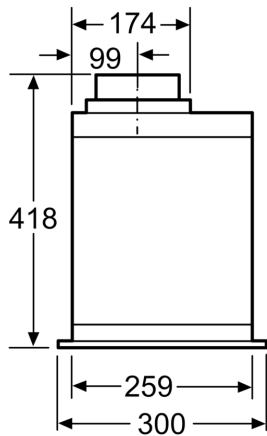
#### Heating Functions

- Extraction rate according to EN 61591 Ø 15 cm: max. Normal use 575 m³/h. Intensive 650 m³/h
- Noise level according to EN 60704-3 exhaust air:
- Max. normal use: 67 dB(A) re 1 pW
- Intensive: 70 dB(A) re 1 pW
- Noise min./max. Normal Level: 53/67 dB
- With the Clean Air Plus recirculation kit (available as accessory) your appliances reaches:
- Extraction rate in recirculation mode: Max. normal use: 541 m³/h
- Intensive: 606 m³/h
- Noise level in recirculation mode: Max. normal use: 71 dB(A) re 1 pW
- Intensive: 74 dB(A) re 1 pW

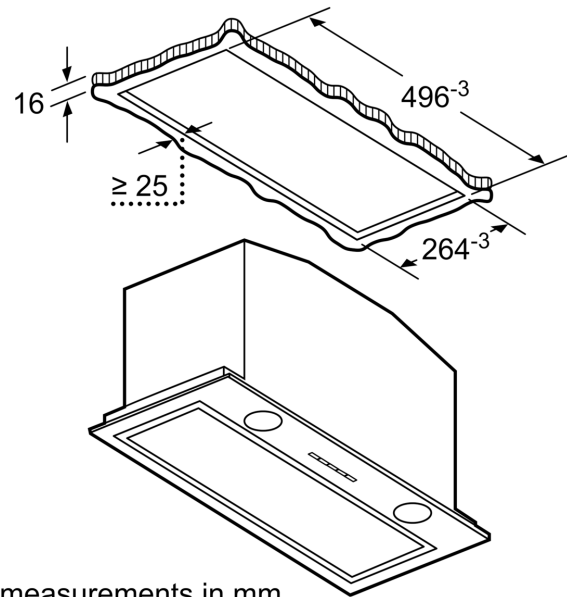
#### Technical Information

- Appliance dimensions (HxWxD): 418 x 520 x 300 mm
- Built-in dimensions: width: 50 cm, depth: 26 cm
- 120 or 150 mm tube connection diameter
- Electrical cable length 1.5 m

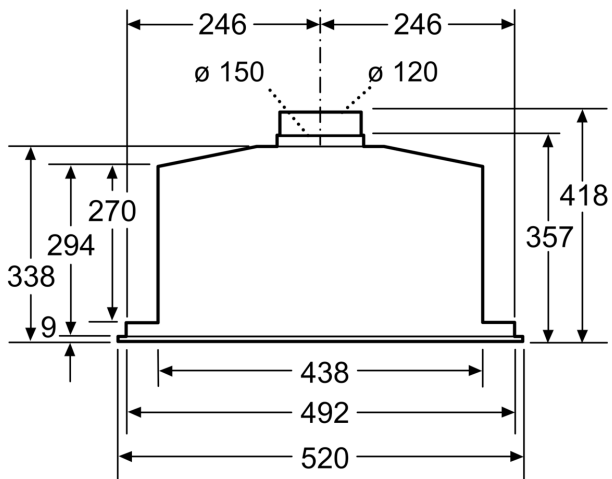
N 50, INTEGRATED RANGEHOOD, 52 CM,  
STAINLESS STEEL  
D55MH56N0A



measurements in mm



measurements in mm



measurements in mm