

N 90, INTEGRATED RANGEHOOD, 70 CM, CLEAR
GLASS BLACK PRINTED
D57ML67N1A



Z5135X1	Standard odor filter (replacement)
Z5135X3	Standard recirculation kit
Z51ITD1X1	Long Life recirculation kit external
Z51ITP0X0	Long Life odor filter (replacement)
Z51IXB1X6	Clean Air Plus odor filter (replacement)
Z51IXC1X6	Clean Air Plus recirc. kit external

- ✓ Efficient Drive Motor – Quiet and energy-efficient motor for a calmer kitchen.
- ✓ Intensive Speed Setting: Increases the extraction rate when cooking steam is intense.
- ✓ Dimmer Function: Easily dim the light according to your mood with the touch of a finger.

Typology:	Built-in/Built-under
Length electrical supply cord:	150.0 cm
Min. required niche size for installation (HxWxD):	418mm x 676.0mm x 264mm mm
Minimum distance above an electric cooktop:	600 mm
Minimum distance above a gas cooktop:	650 mm
Net weight:	9.4 kg
Type of control:	Electronic
Number of power settings:	3-stages + intensive setting
Maximum output air extraction:	575 m ³ /h
Boost position output recirculating:	722 m ³ /h
Maximum output recirculating air:	533 m ³ /h
Boost position air extraction:	775 m ³ /h
Number of lights:	2
Noise level:	64 dB(A) re 1 pW
Diameter of air outlet:	120 / 150 mm
Grease filter material:	Washable aluminium
EAN code:	4242004273561
Connection Rating:	172 W
Fuse protection:	3 A
Voltage:	220-240 V
Frequency:	50 Hz
Plug type:	AU plug
Installation typology:	Built-in



N 90, INTEGRATED RANGEHOOD, 70 CM, CLEAR
GLASS BLACK PRINTED
D57ML67N1A

Design & Innovation

- For installation in a kitchen cabinet
- Appliance colour: brushed steel
- Rim ventilation
- Filter cover glass
- Suitable for ducted extraction and recirculation
- Accessories required for recirculated extraction: Recirculating kit

Features

- Push button controls (3 power levels plus intensive setting) with Electronic display
- Automatic intensive revert setting - 6 min
- Efficient BLDC-technology
- Dishwasher safe metal grease filters
- Saturation indicator for grease filters
- 2 x 1 Watt LED lights
- Light Intensity: 244 lux
- Colour Temperature: 4000 K
- No with Dimming function

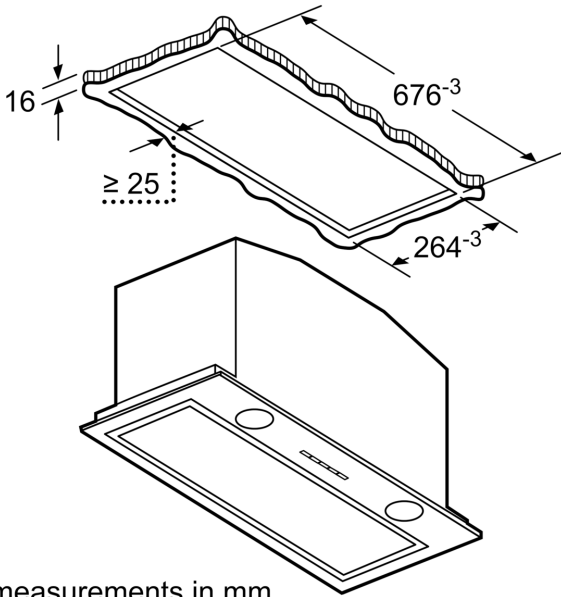
Size & Power

- Extraction rate according to EN 61591 \varnothing 15 cm: max. Normal use 575 m³/h. Intensive 775 m³/h
- Noise level according to EN 60704-3 exhaust air:
 - Max. normal use: 64dB(A) re 1 pW
 - Intensive: 70 dB(A) re 1 pW
- Noise min./max. Normal Level: 46/64 dB
- Noise level according to EN 60704-3 und EN 60704-2-13 at max. normal use exhaust air: 64 dB(A) re 1 pW (51 dB(A) re 20 μ Pa sound pressure)
- With the Clean Air Plus recirculation kit (available as accessory) your appliances reaches:
 - Extraction rate in recirculation mode: Max. normal use: 533m³/h
 - Intensive: 722m³/h
 - Noise level in recirculation mode: Max. normal use: 71dB(A) re 1 pW
 - Intensive: 77 dB(A) re 1 pW
- Energy Efficiency Class: A++ (at a range of energy efficiency classes from A++ to E)
- with one-way flap: prevents outside air from entering your kitchen

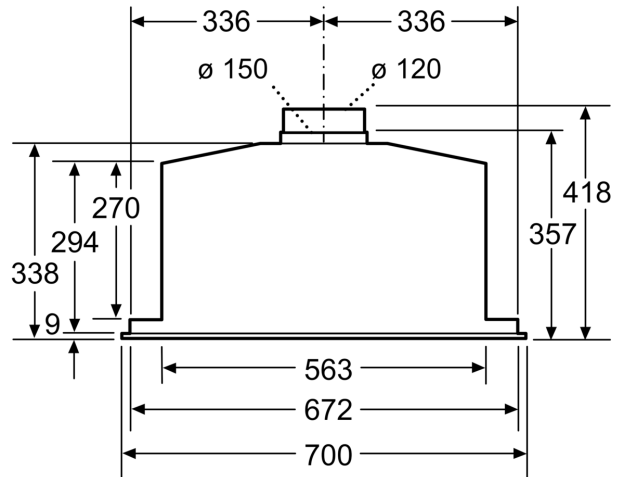
Technical Information

- Appliance dimensions (HxWxD): 418 x 700 x 300 mm
- Built-in dimensions: width: 68 cm, depth: 26 cm
- 120 or 150 mm tube connection diameter
- Electrical cable length 1.5 m

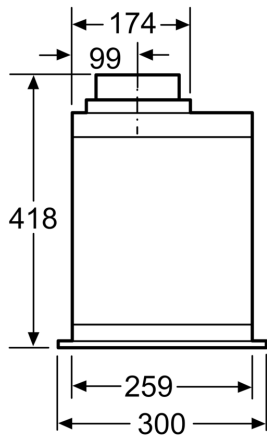
N 90, INTEGRATED RANGEHOOD, 70 CM, CLEAR
GLASS BLACK PRINTED
D57ML67N1A



measurements in mm



measurements in mm



measurements in mm