

N 70, INTEGRATED RANGEHOOD, 86 CM,  
STAINLESS STEEL  
D58ML66N1



Z51ITP0X0	Long Life odor filter (replacement)
Z51IXB1X6	Clean Air Plus odor filter (replacement)
Z51IXC1X6	Clean Air Plus recirc. kit external
Z99QX70X0S	Adapter
Z5100X0	Remote control
Z5135X1	Standard odor filter (replacement)
Z5135X3	Standard recirculation kit
Z51ITD1X1	Long Life recirculation kit external

The integrated rangehood: offers a sleek and seamless design in the kitchen with fully integrated installation.

- ✓ Efficient Drive Motor – Quiet and energy-efficient motor for a calmer kitchen.
- ✓ Intensive Speed Setting: Increases the extraction rate when cooking steam is intense.
- ✓ Dimmer Function: Easily dim the light according to your mood with the touch of a finger.

Typology:	Built-in/Built-under
Length electrical supply cord:	150.0 cm
Min. required niche size for installation (HxWxD):	418mm x 836.0mm x 264mm mm
Minimum distance above an electric cooktop:	600 mm
Minimum distance above a gas cooktop:	650 mm
Net weight:	9.8 kg
Type of control:	Electronic
Number of power settings:	3-stages + intensive setting
Maximum output air extraction:	610 m <sup>3</sup> /h
Boost position output recirculating:	727 m <sup>3</sup> /h
Maximum output recirculating air:	563 m <sup>3</sup> /h
Boost position air extraction:	800 m <sup>3</sup> /h
Number of lights:	2
Noise level:	64 dB(A) re 1pW
Diameter of air outlet:	120 / 150 mm
Grease filter material:	Washable aluminium
EAN code:	4242004238300
Connection Rating:	172 W
Fuse protection:	3 A
Voltage:	220-240 V
Frequency:	50 Hz
Plug type:	Gardy plug w/ earthing
Installation typology:	Built-in



N 70, INTEGRATED RANGEHOOD, 86 CM,  
STAINLESS STEEL  
D58ML66N1

#### Design & Innovation

- For installation in a kitchen cabinet
- Appliance colour: brushed steel
- Rim ventilation
- metal grease filters with stainless steel cover

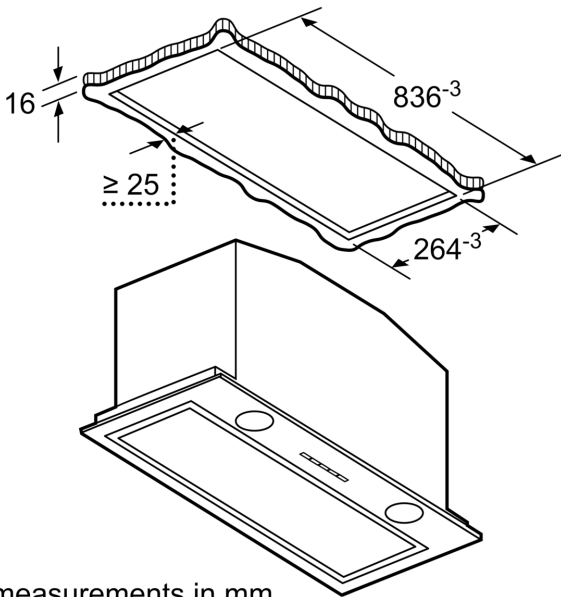
#### Power and Mode of Operation

- Electronic controls
- Push button controls (3 power levels plus intensive setting) with Electronic display
- Extraction rate according to EN 61591 ø 15 cm: max. Normal use 610 m<sup>3</sup>/h. Intensive 800 m<sup>3</sup>/h
- Noise min./max. Normal Level: 41/64 dB
- Suitable for ducted extraction and recirculation
- Accessories required for recirculated extraction: Recirculating kit
- EfficientDrive BLDC technology
- 2 x 1 Watt LED lights
- Dishwasher safe metal grease filters
- Saturation indicator for grease filters
- Automatic intensive revert setting - 6 min
- Automatic run on time - 30 min

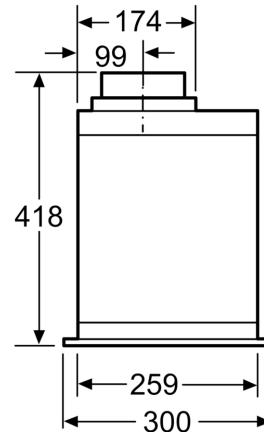
#### Technical Information

- Built-in dimensions: width: 84 cm, depth: 26 cm
- 120 or 150 mm tube connection diameter
- Electrical cable length 1.5 m
- Power rating: 172 W

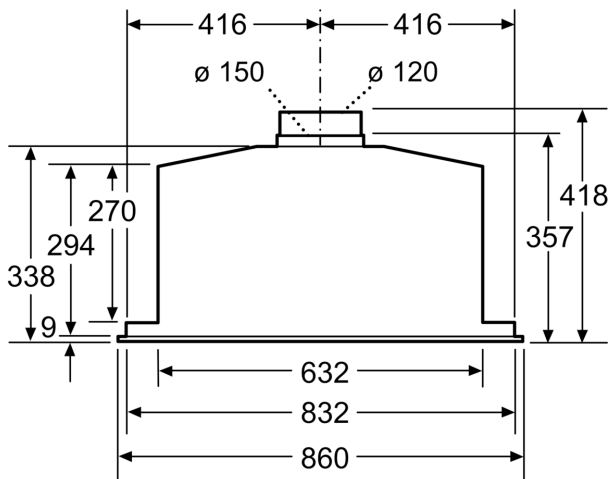
N 70, INTEGRATED RANGEHOOD, 86 CM,  
STAINLESS STEEL  
D58ML66N1



measurements in mm

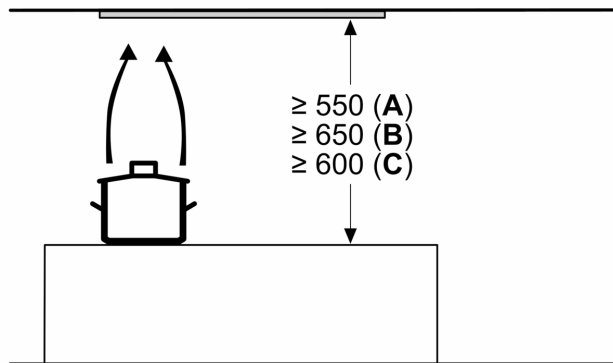


measurements in mm



measurements in mm

Measurements in mm



**A:** Electric

**B:** Gas - from upper edge of pan support

**C:** Electric - for Australia and New Zealand