

*N 50, BUILT-IN COMPACT MICROWAVE WITH
STEAM FUNCTION, 60 X 45 CM, STAINLESS STEEL
C1APG64N0B*



1 x insert grid, 1 x Plug-in grid, 1 x glass pan, 1 x Steam container

Z11GT10X3 Glass roasting dish, 5,4l

Triple your options with our 45 cm high built-in microwave combination with hot air and steam function, offering multiple options for cooking your dish

- ✓ Microwave - high wattage and low effort for quick meals
- ✓ Steam function - prepare a variety of tasty dishes with our steam function
- ✓ Hotair - Takes your baking to new levels thanks to our optimal heat distribution.
- ✓ Control Dials & One-Touch Buttons – select the right programme using your intuition
- ✓ LCD-Display – simple, straightforward with large characters for clear reading

Type of micro-wave oven: MW only
 Type of control: Electronic
 Dimensions: 455 x 594 x 545 mm
 Cavity dimensions: 236.0 x 432.0 x 350 mm
 Length electrical supply cord: 150.0 cm
 Net weight: 35.1 kg
 Gross weight: 38.8 kg
 EAN code: 4242004222613
 Maximum micro-wave power: 1000 W
 Connection Rating: 3100 W
 Fuse protection: 16 A
 Voltage: 220-240 V
 Frequency: 50 Hz
 Plug type: fixed connection
 (electrical connection by electrician)
 Included accessories: 1 x insert grid, 1 x Plug-in grid, 1 x glass pan,
 1 x Steam container



N 50, BUILT-IN COMPACT MICROWAVE WITH STEAM FUNCTION, 60 X 45 CM, STAINLESS STEEL C1APG64N0B

Design

- LCD display, red, white
- Electronic clock timer, electronic timer
- Drop down door
- stainless steel, Ceramic glass base cavity with Ceramic glass base, stainless steel
- Retractable control dials, Touch control, Start button, Fixed control dials
- Bar handle

Features

- Automatic safety switch off
- Start button Door contact switch
- Intelligent microwave inverter technology: For optimised results maximum output power will be regulated to 600 W when used in longer operation for gentler cooking.
- LED light
- Cooling fan
- Automatic water tank detection

Cleaning

- Catalytic back panel
- cleaning program of water pipe
- De-scaling programme

Programmes/functions

- Built-in Microwave with steam function with the heating functions: Microwave, Steaming, Hot Air, Circo-roasting, Full surface grill
- Grill and microwave power levels 90 W, 180 W, 360 W, 600 W combinable
- 90-180-360-600-1000 Watts and the following options 1000 W, 180 W, 360 W, 600 W, 90 W
- 2 KW grill function
- All heating functions may be used separately or in combination
- Three different steam levels available
- Number of automatic programmes: 30 PC
- 4 defrost and 26 cooking programmes
- Fast preheating

Accessories

- 1 x Steam container, 1 x insert grid, 1 x Plug-in grid, 1 x glass pan

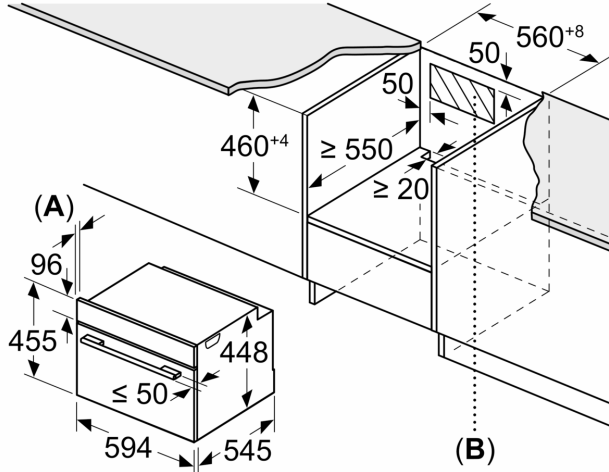
Performance/technical information

- Cavity volume: 36 l
- Temperature range 40 °C - 230 °C
- 0.8 l Water tank capacity
- Location of water tank: Outside cavity
- Power cord length 150 cm Cable length
- Total connected load electric: 3.1 KW
- Nominal voltage: 220 - 240 V
- Appliance dimension (h x w x d): 455 mm x 594 mm x 545 mm
- Niche dimension (h x w x d): 450 mm - 452 mm x 560 mm - 568 mm x 550 mm

• Please refer to the dimensions provided in the installation manual

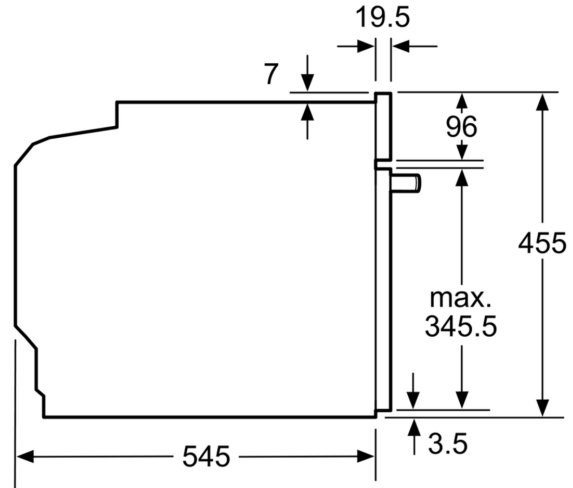
N 50, BUILT-IN COMPACT MICROWAVE WITH
STEAM FUNCTION, 60 X 45 CM, STAINLESS STEEL
C1APG64N0B

measurements in mm

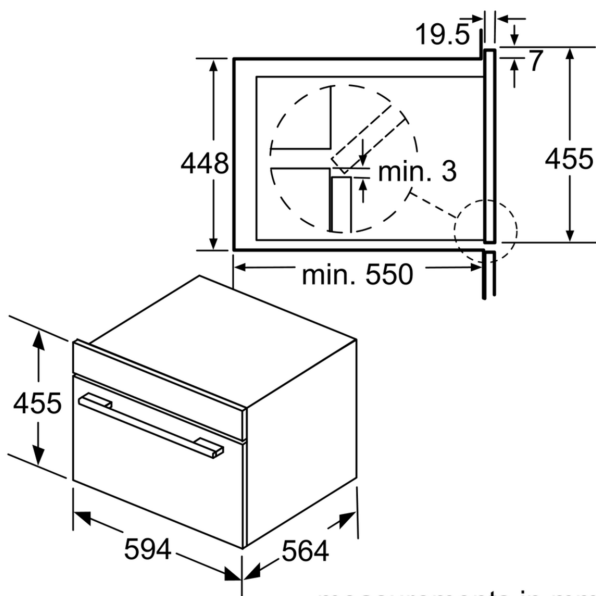


A: 19.5

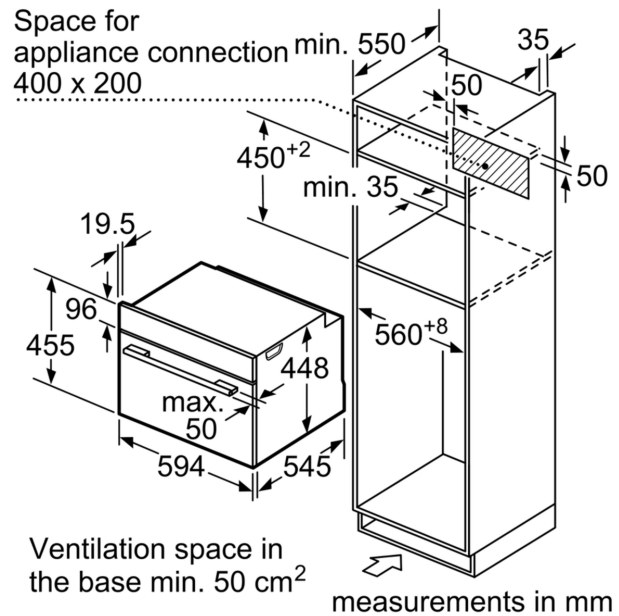
B: Space for appliance connection 400 x 200



measurements in mm



measurements in mm



measurements in mm