

N 90, CANOPY COOKER HOOD, 70 CM, CLEAR
GLASS BLACK PRINTED
D57ML67N1B



A⁺⁺



Canopy hood: designed to fit neatly under an overhead unit or cabinet. They're discreet and effectively use valuable space.

- ✓ Efficient Drive Motor – Quiet and energy-efficient hood motor for a calmer kitchen.
- ✓ Intensive speed setting: increases the extraction rate when the steam gets intense
- ✓ Dimmer Function – easily dim the light according to your mood with the touch of a button
- ✓ Interval Ventilation – automatically ventilates every hour for crisp, clean air
- ✓ Automatic After-running – ventilation continues for several minutes after you turn it off

Optional accessories

| | |
|----------|--|
| Z51TP0X0 | Long Life odor filter (replacement) |
| Z51XB1X6 | Clean Air Plus odor filter (replacement) |
| Z51XC1X6 | Clean Air Plus recirc. kit external |
| Z5135X3 | Standard recirculation kit |
| Z51TD1X1 | Long Life recirculation kit external |
| Z5100X0 | Remote control |
| Z5135X1 | Standard odor filter (replacement) |

Features

Technical Data

| | |
|--|------------------------------|
| Typology: | Built-in/Built-under |
| Length of electrical supply cord: | 150.0 cm |
| Min. required niche size for installation (HxWxD): | 418mm x 676.0mm x 264mm mm |
| Minimum distance above an electric hob: | 500 mm |
| Minimum distance above a gas hob: | 650 mm |
| Net weight: | 9.4 kg |
| Type of control: | Electronic |
| Number of speed settings: | 3-stages + intensive setting |
| Maximum output air extraction: | 575 m ³ /h |
| Boost position output recirculating: | 722 m ³ /h |
| Maximum output recirculating air: | 533 m ³ /h |
| Boost position air extraction: | 775 m ³ /h |
| Maximum Air flow: | 575 m ³ /h |
| Number of lights (Stck): | 2 |
| Noise level: | 64 dB(A) re 1 pW |
| Diameter of air outlet: | 120 / 150 mm |
| Grease filter material: | Washable aluminium |
| EAN code: | 4242004237938 |
| Connection rating: | 172 W |
| Fuse protection: | 3 A |
| Voltage: | 220-240 V |
| Frequency: | 50 Hz |
| Plug type: | GB plug |
| Installation type: | Built-in |
| Delay Shut off modes: | 30 min |



N 90, CANOPY COOKER HOOD, 70 CM, CLEAR
GLASS BLACK PRINTED
D57ML67N1B

Features

Key performance features:

- Energy Efficiency Class: A++ (at a range of energy efficiency classes from A+++ to D)
- Extraction rate according to EN 61591 ø 15 cm:
- max. Normal use 575 m³/h
- Intensive 775 m³/h
- Noise max. Normal Level: Noise, max. speed in normal us: 64 dB dB*

Features

- LED display
- Soft touch control
- 3 speeds plus intensive
- Automatic intensive revert (6mins)
- 2 x 1W LED lights
- softLight with dimmer function
- Interval operation
- EfficientDrive BLDC technology
- Automatic after running (Automatic after running (30 mins))
- 2 metal grease filter cassettes
- Saturation indicator for grease filter
- No

Design

- Canopy hood
- Installation: Cabinet
- Filter cover glass, metal grease filter
- Electronic controls
- Suitable for ducted extraction and recirculation
- For recirculated extraction recirculating kit or CleanAir recirculating kit (accessory) needed
- Extraction rate according to EN 61591 max. 775 m³/h
- Noise level according to EN 60704-3 and EN 60704-2-13 at max. normal use exhaust air: 64 dB(A) re 1 pW
- Noise level according to EN 60704-3 and EN 60704-2-13 exhaust air:
- Max. normal use: 64 dB(A) re 1 pW
- Intensive: 70 dB(A) re 1 pW
- With the Clean Air Plus recirculation kit (available as optional accessory) your appliances reaches:
- Extraction rate in recirculation mode: Max. normal use: 533 m³/h
- Intensive: 722 m³/h
- Noise level in recirculation mode: Max. normal use: 71 dB(A) re 1 pW
- Intensive: 77 dB(A) re 1 pW
- Power rating: 172 W
- Light Intensity: 244 lux
- Colour Temperature: 4000 K
- Electrical cable length 1.5 m
- Blower Efficiency Class: A*
- Lighting Efficiency Class: A*

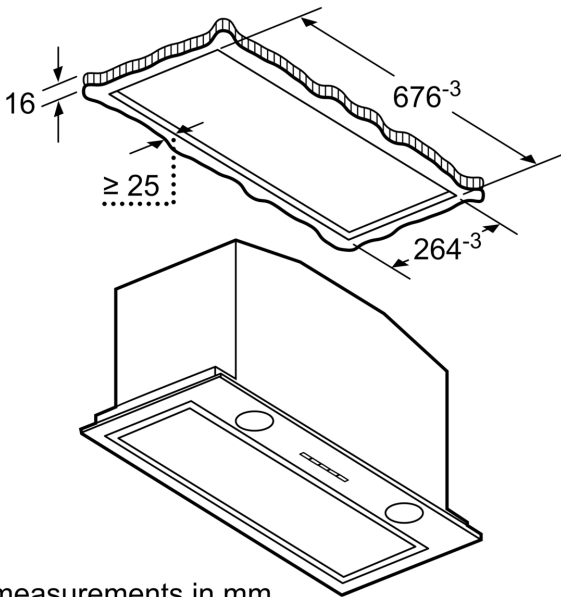
- Grease Filtering Efficiency Class: D*
- Average Energy Consumption: 30.3 kWh/year*
- Diameter pipe Ø 150 mm (Ø 120 mm enclosed)
- Dimensions exhaust air (HxWxD): 418-418 x 700 x 300 mm

Optional accessories

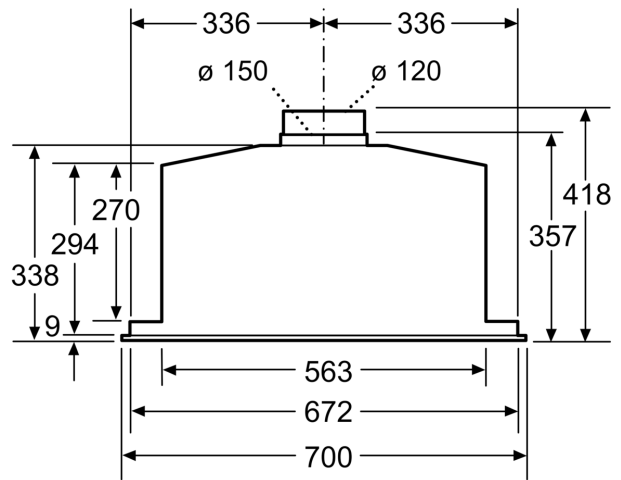
* In accordance with the EU-Regulation No 65/2014

N 90, CANOPY COOKER HOOD, 70 CM, CLEAR
GLASS BLACK PRINTED
D57ML67N1B

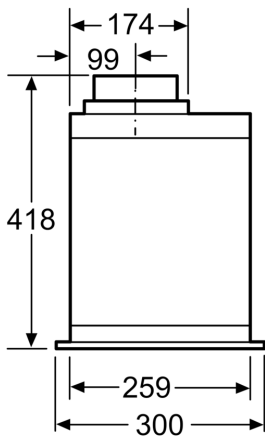
Dimensioned drawings



measurements in mm

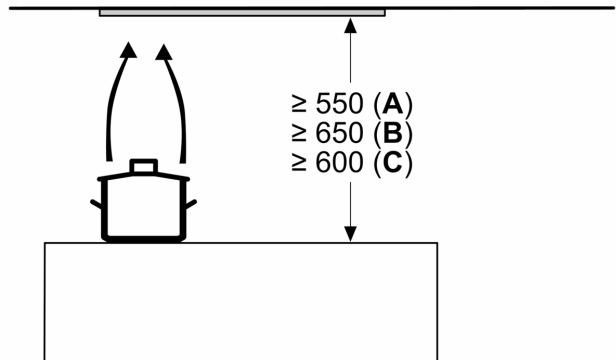


measurements in mm



measurements in mm

Measurements in mm



A: Electric

B: Gas - from upper edge of pan support

C: Electric - for Australia and New Zealand