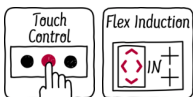
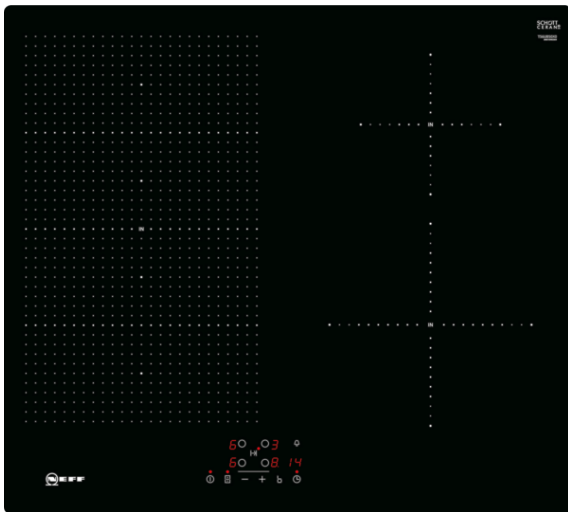


Induction hob, 60 cm, Black  
T56UB50X0



COOKING PASSION SINCE 1877



#### FlexInduction hob with TouchControl.

- ✓ Touch Control – a convenient way to control hobs with just one touch and a timer if needed.
- ✓ Flex Induction – place your pots and pans within the flex zone anywhere you want and heat them exactly where they stand.
- ✓ Power Boost – optimized power level function for more flexible and even faster heating.
- ✓ Induction – the heat is generated directly in the cookware for precise cooking that stops when power is off.

#### Features

##### Technical Data

Product name/family : Cooking zone ceramic  
 Construction type : Built-in  
 Energy input : Electric  
 Total number of positions that can be used at the same time : 4  
 Required niche size for installation (HxWxD) : 51 x 560-560 x 490-500  
 Width of the appliance : 592  
 Dimensions : 51 x 592 x 522  
 Dimensions of the packed product (HxWxD) (mm) : 126 x 753 x 608  
 Net weight (kg) : 13.671  
 Gross weight (kg) : 14.9  
 Residual heat indicator : Separate  
 Location of control panel : Hob front  
 Basic surface material : Ceramic  
 Color of surface : Black  
 Approval certificates : AENOR, CE  
 Length of electrical supply cord (cm) : 110  
 EAN code : 4242004234531  
 Electrical connection rating (W) : 7400  
 Voltage (V) : 220-240  
 Frequency (Hz) : 50; 60

#### Optional accessories

Z9410X1	Stainless Steel roaster with glas lid
Z9415X1	
Z9416X2	Griddle Plate
Z9417X2	Teppan Yaki (large)
Z943SE0	Set of 2 pots and 1 pan



4 242004 234531

## Induction hob, 60 cm, Black

T56UB50X0



COOKING PASSION SINCE 1877

### Features

#### Control

- Touch control

#### Flexibility

- Flex Induction
- 4 zone induction hob
- no

#### Special features

- Boost setting for all zones
- Variable 17-stage power settings for each zone
- Digital display of cooking levels
- 2 stage residual heat indicators
- Timer with automatic shut off for all zones  
LED timer for each zone with switch off function and acoustic signal
- ReStart function
- Automatic pan recognition  
Safety cut out facility  
Control panel lock

#### Technical information

- Cooking zones: 1 x Ø400 mmx240 mm,3.3 KW(max. Power levels3.7 KW) Induction or 2 x Ø 200 mm,2.2 KW(max. Powerlevels3.7 KW) Induction; 1 x Ø145 mm,1.4 KW(max. Power levels2.2 KW) Induction;1 x Ø210 mm,2.2 KW(max. Power levels3.7 KW) Induction
- Measurement: (H/B/T)51x592x522mm
- Installation dimensions: (ID/W/D)51 mmx560 mmx490 mm
- 60 cmwidth
- Length wire connection:110 cm
- Main switch
- Min. worktop thickness:16 mm
- Output7400 W
- Cable included in packaging

Dimensioned drawings

