

WASHER DRYER, 8/5 KG
V8540X0GB



Experience effortless laundry days with our built-in washer-dryer: Wash and dry in one smooth operation, achieve ideal results with quick programs, and enjoy perfect care with Auto Dry that prevents shrinkage.

- ✓ Speed Perfect – Optimal washing results in up to 65% less time.
- ✓ Efficient Silent Drive – Blissfully quiet, efficient and long-lasting motor.
- ✓ Refresh – Remove food odour from your clothes with our steam-based refresh technology
- ✓ Large LED Display – Large display for easier navigation and wash programme delay of up to 24 hours
- ✓ Aqua Stop – For a lifetime protection in case of water damage.

Features

Technical Data

Energy Efficiency Class Wash/Dry cycle(Regulation): E
 Energy Efficiency Class Eco 40-60 programme (Regulation): A
 Weighted energy consumption in kWh per 100 full Wash/Dry cycles:324 kWh/100 cycles
 Weighted energy consumption in kWh per 100 washing cycles of eco 40-60 programme: 47 kWh/100 cycles
 Maximum capacity in kg in a Wash/Dry cycle:5.0 kg
 Maximum capacity in kg in a wash cycle: 8.0 kg
 The water consumption of the full wash and dry cycle in liters per cycle: 80 l
 The water consumption of the eco programme in liters per cycle: 48 l
 Duration of the full wash and dry cycle in hours and mins at rated capacity: 9:20 h
 Duration of eco 40-60 programme in hours and mins at rated capacity: 3:38 h
 Spin-drying efficiency class of eco 40-60 programme:B
 Airborne acoustical noise emissions : 68 dB(A) re 1pW
 Airborne acoustical noise emission class:A
 Built-in / Free-standing: Built-in
 Removable top: No
 Door hinge:Left
 Length electrical supply cord: 200 cm
 Dimensions of the product:825x595x525 mm
 Net weight: 56.6 kg
 Drum volume: 53 l
 EAN code:4242004290049



WASHER DRYER, 8/5 KG U8540X0GB

Features

Performance

- Energy Efficiency Class Wash and Dry¹: E
- Energy Efficiency Class Washing²: A
- Energy³ / Water⁴ Wash and Dry: 324 kWh / 80 litres
- Energy⁵ / Water⁶ Washing: 47 kWh / 48 litres
- Load capacity Wash and Dry / Washing: 1 - 5 kg / 1 - 8 kg
- Programme duration⁷ Wash and Dry / Washing: 9:20 h:min / 3:38 h:min
- Spin drying efficiency class: EU19_spin efficiency class: B
- Spin speed^{**}: 600 - 1400 rpm
- Noise level: 68 dB (A) re 1 pW
- Noise efficiency class: A

Programmes/functions

- Special programmes washing: Drum clean with reminder, Rapid 15', Hygiene care, Mixed Load, Drain / Spin, Rinsing / Spinning
- Most common washing programmes can be used as solo-drying programme or as washing and drying in one go programme
- Standard programmes for drying: Cottons, Easy-Care
- Special programmes drying: Refresh, Intensive dry, Low heat drying program, Wash & Dry 60'

Key features

- Options washing: Spin speed selection, extra rinse, Memory, SpeedPerfect, Start / Reload, Temperature selection, prewash
- Options drying: Iron dry, Cupboard dry
- Drying options for most wash programmes
- autoDry function, Timed drying programmes

Additional features

- Reload Function – lets you add items even after the programme has started.
- AquaStop: Neff home appliance with lifetime warranty against water damage
- Large display for programme progress indication, temperature, spin speed, time remaining and 24 hours time delay, and indication of drying level
- Intelligent Water System - optimised water consumption during washing cycle
- Furniture door is reversible
- Fully electronic control dial for all wash and special programmes
- Drum clean with reminder function
- Drum interior light
- EcoSilence Drive
- Foam detection system
- Safeguard monitoring system adjusts load distribution
- Buzzer to indicate the end of cycle
- Child safety lock
- White door with 180° opening door
- Metal door catch
- Reload facility

Technical Information

- adjustable base height: 16 cm

- adjustable base depth: 8 cm
- Dimensions (H x W): 82.5 cm x 59.5 cm
- Appliance depth: 52.5 cm
- Appliance depth incl. door: 54.0 cm
- Appliance depth with open door: 97.5 cm

^{1 2} Scale of Energy Efficiency Classes from A to G

³ Energy consumption in kWh per 100 complete cycles (in Eco 40-60 programme)

⁴ Water consumption in litres per complete cycle (in Eco 40-60 programme)

⁵ Energy consumption in kWh per 100 washing cycles (in Eco 40-60 programme)

⁶ Weighted water consumption in litres per washing cycle (in Eco 40-60 programme)

⁷ Duration of Eco 40-60 programme, Wash and Dry cycle / Wash only cycle

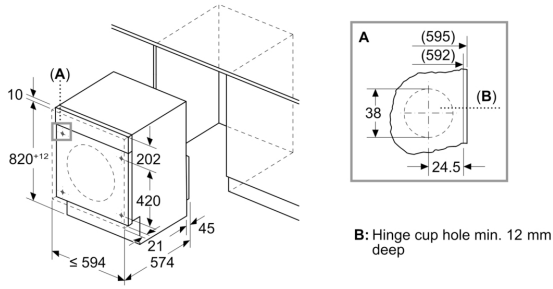
^{**} The maximum spin speed is automatically reduced in the case of laundry imbalances.

* Please find warranty terms under the additional warranties section of our website.

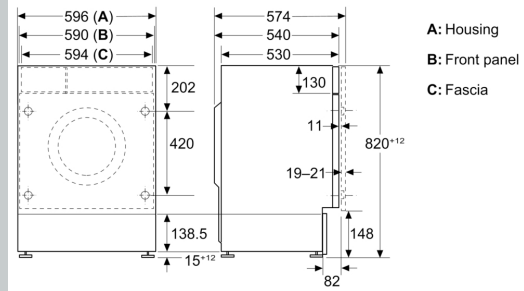
WASHER DRYER, 8/5 KG
V8540X0GB

Dimensioned drawings

Measurements in mm



Measurements in mm



Measurements in mm

