

BUILT-IN WASHING MACHINE, 8 KG, 1400 RPM,
WHITE
W544BX2GB



The extremely quiet and durable built-in washing machine with 8 kg load capacity, special short cycles, stain removal programmes and TimeLight.

- ✓ Speed Perfect – Optimal washing results in up to 65% less time.
- ✓ Intelligent Water System – Smart sensors reduce use of water.
- ✓ Time Light – the remaining programme time is projected onto the floor.
- ✓ Silence – the programme that runs especially quietly. Ideal for easy-care laundry.
- ✓ Quick 15' – Washes, rinses, and spins in just 15 minutes

Energy Efficiency Class: C
 Weighted energy consumption in kWh per 100 washing cycles of eco 40-60 programme: 62 kWh
 Maximum capacity in kg: 8.0 kg
 The water consumption of the eco programme in liters per cycle: 45 l
 Duration of eco 40-60 programme in hours and mins at rated capacity: 3:26 h
 Spin-drying efficiency class of eco 40-60 programme: B
 Airborne acoustical noise emission class: A
 Airborne acoustical noise emissions : 66 dB(A) re 1pW
 Built-in / Free-standing: Built-in
 Dimensions of the product: 818x596x544 mm
 Net weight: 76.1 kg
 Connection Rating: 2300 W
 Fuse protection: 10 A
 Voltage: 220-240 V
 Frequency: 50 Hz
 Length electrical supply cord: 210.0 cm
 Door hinge: Left
 Wheels: No
 EAN code: 4242004267690
 Installation typology: Full-integrated



WMZ2381 Extension for cold water inlet /AquaStop
 WZMPF10 Microplastic Filter
 Z7080X0 Floor securing component
 Z8060X1 Height-adjustable feet

BUILT-IN WASHING MACHINE, 8 KG, 1400 RPM, WHITE W544BX2GB

Performance

- Energy Efficiency Class¹: C
- Energy² / Water³: 62 kWh / 45 litres
- Load capacity: 1 - 8 kg
- Programme duration⁴: 3:26 h:min
- Spin drying efficiency class: B
- Spin speed^{**}: 400 - 1400 rpm
- Noise level: 66 dB (A) re 1 pW
- Noise efficiency class: A
- Fully integratable

Programmes/functions

Key features

- Touch control buttons: Prewash, Ready in, Temperature, SpeedPerfect, start/pause with reload function, Extra Rinse, Spin speed reduction

Additional features

- Reload Function – lets you add items even after the programme has started.
- Large display for programme progress indication, temperature, spin speed, remaining time, 24 hours end time delay and load recommendation
- TimeLight – The time remaining in the program is projected onto the floor.
- EcoSilence Drive
- Eco Silence drive with 10 year warranty
- AquaStop: Neff home appliance with lifetime warranty against water damage
- Intelligent Water System - optimised water consumption during washing cycle
- Drum clean with reminder function
- Continuous automatic load adjustment system
- Foam detection system
- Safeguard monitoring system adjusts load distribution
- Noise insulation: bottom cover
- AntiVibration Design - for more stability and quietness
- Detergent dispensing: easy clean
- Divider for Liquid Detergent
- Buzzer to indicate the end of cycle
- Large white door with 130° opening and 30 cm porthole
- Furniture door is reversible
- Metal door catch

Technical Information

- adjustable base height: 15 cm
- adjustable base depth: 6.5 cm
- Height adjustment with Cardan drive

40-60)

³ Weighted water consumption in litres per cycle (in programme Eco 40-60)

⁴ Duration of Eco 40-60 programme

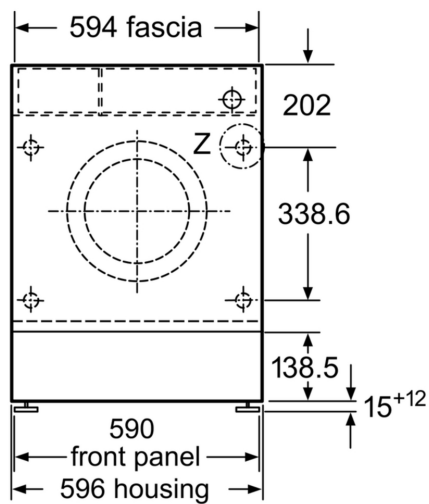
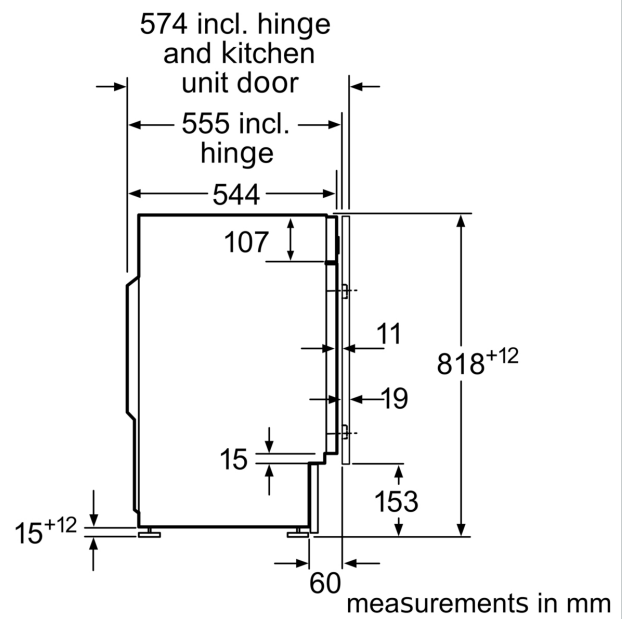
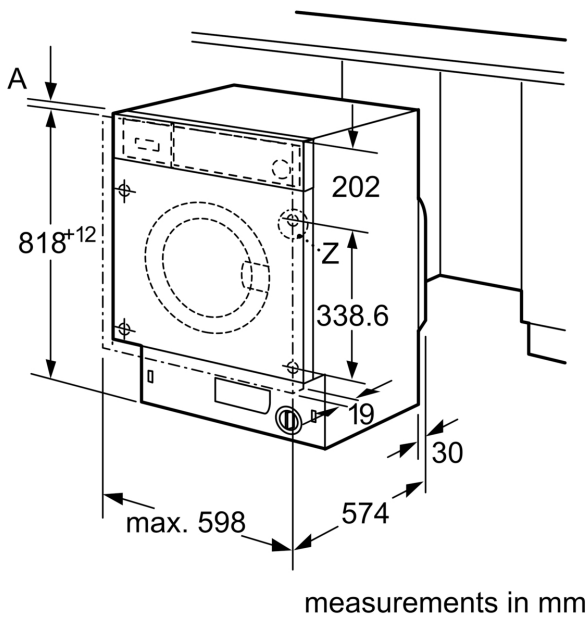
^{**} Values are rounded.

* Please find warranty terms under the additional warranties section of our website.

¹ Scale of Energy Efficiency Classes from A to G

² Energy consumption in kWh per 100 cycles (in programme Eco

BUILT-IN WASHING MACHINE, 8 KG, 1400 RPM,
WHITE
W544BX2GB



Z detail

