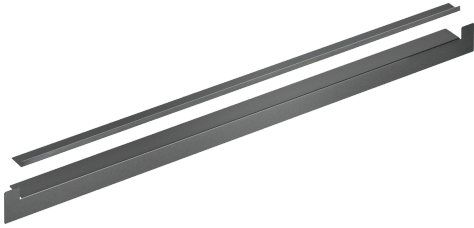


INSTALLATION ACCESSORY, 32 X 594 X 32 MM  
Z13CV06S0



Dimensions of the packed product (HxWxD): ..... 50 x 610 x 50 mm  
Pallet dimensions: ..... 90.0 x 80.0 x 120.0  
Standard number of units per pallet: ..... 400  
Net weight: ..... 0.2 kg  
Gross weight: ..... 0.3 kg  
EAN code: ..... 4242004192541

