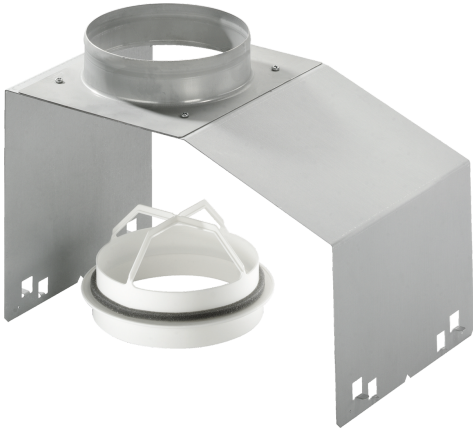


INSTALLATION ACCESSORY
Z5552X0



Features

Technical Data

Dimensions of the packed product (HxWxD): . 240 x 280 x 420 mm
Pallet dimensions: 110.0 x 80.0 x 120.0
Standard number of units per pallet: 24
Net weight: 1.4 kg
Gross weight: 1.9 kg
EAN code:4242004082453



INSTALLATION ACCESSORY
Z5552X0

Dimensioned drawings

