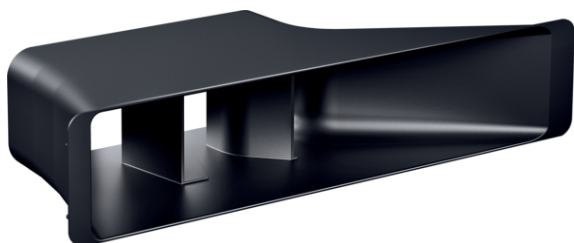


Recirculation kit  
Z821PDO



COOKING PASSION SINCE 1877



Features

Technical Data

Dimensions of the packed product (HxWxD) : 107 x 240 x 440 mm

Pallet dimensions : 100.0 x 80.0 x 120.0

Standard number of units per pallet : 51

Net weight : 0.9 kg

Gross weight : 1.2 kg

EAN code : 4242004250050



#### Features

- Mandatory basic accessories for fully and partly ducted recirculation configurations. Includes
    - 4 high-performance cleanAir odour filters with optimised odour reduction performance for cooking applications with complex odour molecules (e.g. fish). Large scale filter surfaces with high odour reduction capabilities and a lifetime of 360 hours of cooking (nonregenerative). Filters are additionally optimised for low-noise with optimised psycho-acoustics.
    - A diffusor element that can be directly connected to the flat duct elements and that spreads the outflowing air in the plinth area for partly ducted recirculation configurations. The diffusor can also be directly connected to air outlet element with an adhesive tape for fully ducted recirculation configurations.
    - Adhesive tape to ensure a direct connection between the diffusor and the air outlet element such as lamella grids or outlet grids coming from the kitchen furniture manufacturers.
    - A sealing gasquet that can be attached onto a male flat duct before inserting the element into the appliance to ensure air tightness (The air outlet on the back of the appliance can directly be accessed with a male flat duct element (DN 150)).
- The elements enable highly flexible and customised ducted plannings – all further necessary flat ducting elements (DN 150) must be ordered additionally. A return-flow aperture of  $\geq 400\text{cm}^2$  is to be respected in the plinth area.

Recirculation kit  
Z821PD0

Dimensioned drawings

