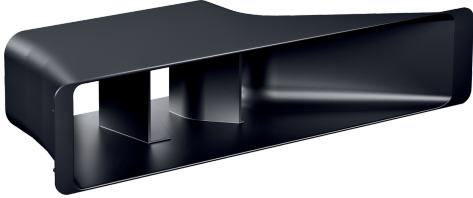


AIR DUCT PART
Z821PD1



√ Diffusor element that can be directly connected to the flat duct elements and that spreads the outflowing air in the plinth area for partly ducted recirculation configurations. The diffusor can also be directly connected to air outlet element with an adhesive tape for fully ducted recirculation configurations.

Dimensions of the packed product (HxWxD): . 180 x 103 x 443 mm
Pallet dimensions: 213.0 x 80.0 x 120.0
Quantity per packing unit:8
Standard number of units per pallet: 160
Net weight: 0.3 kg
Gross weight: 0.5 kg
EAN code:4242004262343



AIR DUCT PART
Z821PD1

measurements in mm

