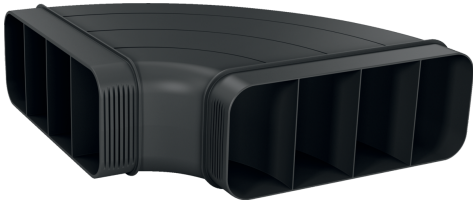


FLAT DUCT, 90 °, HORIZONTAL
Z861SB1



- ✓ 90° flat duct bend element (male) in horizontal configuration
- ✓ Aerodynamically optimised design to minimise pressure loss and maximise air flow rate. Easy-to-cut & easy-to-connect via the female connector sleeve element.
- ✓ The element complies with the Needle Flame Test (according to IEC 60695-11-5) & the V2 flammability class (according to UL94).

Dimensions of the packed product (HxWxD): . 130 x 300 x 305 mm
Pallet dimensions: 175.0 x 80.0 x 120.0
Quantity per packing unit: 1
Standard number of units per pallet: 80
Net weight: 0.6 kg
Gross weight: 1.0 kg
EAN code:4242004253570



FLAT DUCT, 90 °, HORIZONTAL
Z861SB1

measurements in mm

