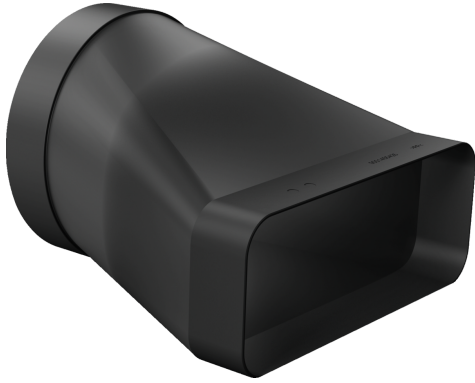


ADAPTER DUCT, 150 MM, ROUND-FLAT
Z861S10



- √ Flat to round converter Ø 150mm
- √ Round-flat adapter accessory (male)
- √ Aerodynamically optimised design to minimise pressure loss and maximise air flow rate. Easy-to-cut & easy-to-connect via the female connector sleeve element.
- √ The element complies with the Needle Flame Test (according to IEC 60695-11-5) & the V2 flammability class (according to UL94).

Dimensions of the packed product (HxWxD): . 190 x 235 x 220 mm
 Pallet dimensions: 205.0 x 80.0 x 120.0
 Quantity per packing unit: 6
 Standard number of units per pallet: 120
 Net weight: 0.3 kg
 Gross weight: 0.5 kg
 EAN code: 4242004253303



ADAPTER DUCT, 150 MM, ROUND-FLAT
Z861S10

measurements in mm

