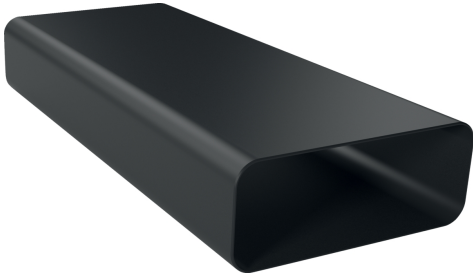


FLAT DUCT
Z861SM1



- ✓ Straight flat-duct tube element (500mm, male)
- ✓ The element complies with the Needle Flame Test (according to IEC 60695-11-5) & the V2 flammability class (according to UL94).

Dimensions of the packed product (HxWxD): ... 98 x 235 x 530 mm
Pallet dimensions: 175.0 x 80.0 x 120.0
Standard number of units per pallet: 96
Net weight: 0.8 kg
Gross weight: 1.0 kg
EAN code: 4242004253556



FLAT DUCT
Z861SM1

measurements in mm

