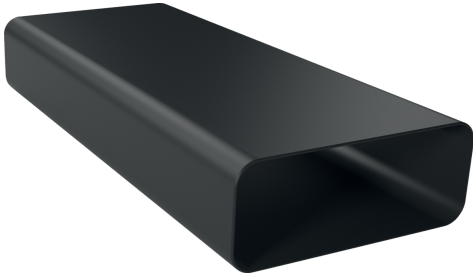


FLAT DUCT
Z861SM2



- ✓ Straight tube 1000mm
- ✓ Z861SM2 Accessory Surface Cooking
- ✓ The element complies with the Needle Flame Test (according to IEC 60695-11-5) & the V2 flammability class (according to UL94).
- ✓ Straight flat-duct tube element (1,000mm. male)
- ✓ Aerodynamically optimized for minimised pressure losses and maximised flow rate. Easy-to-cut & easy-to-connect via the female connector sleeve element.

Dimensions of the packed product (HxWxD): . 96 x 235 x 1030 mm
Pallet dimensions: 175.0 x 80.0 x 120.0
Standard number of units per pallet: 48
Net weight: 1.7 kg
Gross weight: 2.0 kg
EAN code: 4242004253563



FLAT DUCT
Z861SM2

measurements in mm

