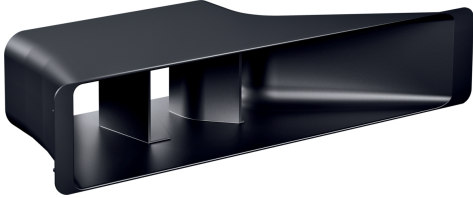


FLAT DUCT
Z821PD1



√ Diffuser element that can be directly connected to the flat duct elements and that spreads the outflowing air in the plinth area for partly ducted recirculation configurations. The diffuser can also be directly connected to air outlet element with an adhesive tape for fully ducted recirculation configurations.

Features

Technical Data

Dimensions of the packed product (HxWxD): 180x103x443 mm
 Pallet dimensions: 213.0 x 80.0 x 120.0
 Quantity per packing unit: 8
 Standard number of units per pallet: 160
 Net weight: 0.3 kg
 Gross weight: 0.5 kg
 EAN code: 4242004262343



FLAT DUCT
Z821PD1

Dimensioned drawings

measurements in mm

