

N 50, INTEGRATED RANGEHOOD, 52 CM,
STAINLESS STEEL
D55MH56NOB



Designed to fit neatly under an overhead canopy kitchen unit, saving valuable space, but still doing the job effectively.

- ✓ Intensive Speed Setting: Increases the extraction rate when cooking steam is intense.
- ✓ LED Lighting: Clear illumination while you cook.

Z51XB1X6	Clean Air Plus odor filter (replacement)
Z51XC1X6	Clean Air Plus recirc. kit external
Z5135X1	Standard odor filter (replacement)
Z5135X3	Standard recirculation kit
Z51ITD1X1	Long Life recirculation kit external
Z51ITPOX0	Long Life odor filter (replacement)

Typology: Built-in/Built-under
 Length electrical supply cord: 150.0 cm
 Min. required niche size for installation (HxWxD): 418mm x 496.0mm x 264mm mm
 Minimum distance above an electric hob: 600 mm
 Minimum distance above a gas hob: 650 mm
 Net weight: 9.0 kg
 Type of control: Electronic
 Number of speed settings: 3-stages + intensive setting
 Maximum output air extraction: 575 m³/h
 Boost position output recirculating: 606 m³/h
 Maximum output recirculating air: 541 m³/h
 Boost position air extraction: 650 m³/h
 Number of lights: 2
 Noise level: 67 dB(A) re 1pW
 Diameter of air outlet: 120 / 150 mm
 Grease filter material: Washable aluminium
 EAN code: 4242004187745
 Connection Rating: 277 W
 Fuse protection: 3 A
 Voltage: 220-240 V
 Frequency: 50 Hz
 Plug type: GB plug
 Installation typology: Built-in



N 50, INTEGRATED RANGEHOOD, 52 CM,
STAINLESS STEEL
D55MH56NOB

Design

- For installation in a kitchen cabinet
- Appliance colour: stainless steel
- Suitable for ducted or re-circulated extraction
- Accessories required for recirculated extraction: Recirculating kit
- Rim ventilation
- Metal grease filters with stainless steel cover

Convenience

- Push button controls (3 power levels + intensive) with Electronic display
- 2 x 1 Watt LED lights
- Saturation indicator for metal & carbon filters
- Dishwasher safe metal grease filters

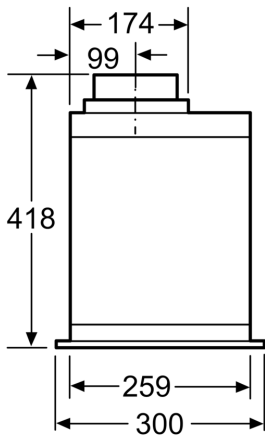
Performance

- 3 power levels + intensive
- Automatic intensive revert setting - 6 min.

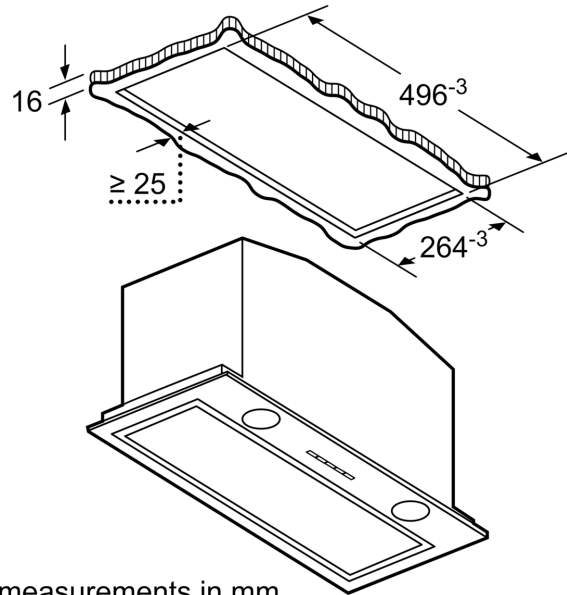
Technical Information

- Mounting dimensions: width: 50 cm, depth: 26 cm
- Dimensions exhaust air (HxWxD): 418-418 x 520 x 300 mm
- Dimensions recirculating (HxWxD): 418-418 x 520 x 300 mm
- 120 or 150mm tube connected diameter
- 277 W total connected load
- Electrical cable length 1.5 m
- Light Intensity: 244 lux
- Colour Temperature: 4000 K
- Extraction rate according to EN 61591:
 - Min:330m³/h
 - Intensive:650 m³/h
- Noise level according to EN 60704-2-13 min/max (intensive) with exhaust air: 53/70 dB(A)

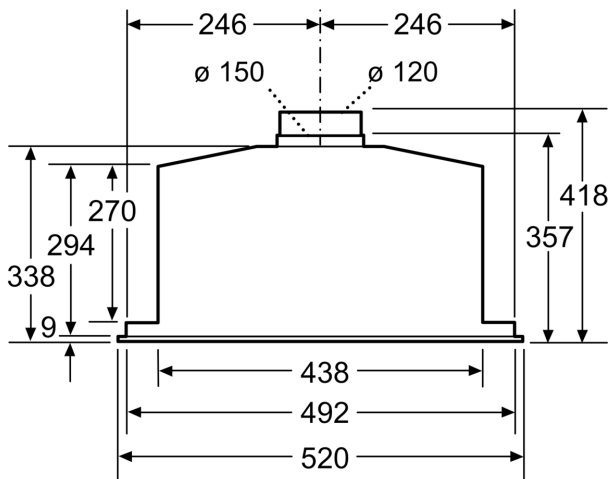
N 50, INTEGRATED RANGEHOOD, 52 CM,
STAINLESS STEEL
D55MH56NOB



measurements in mm

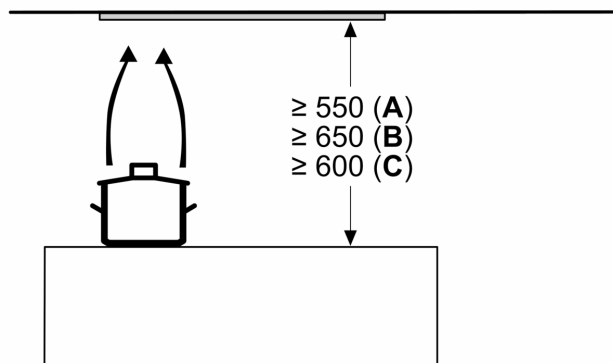


measurements in mm



measurements in mm

Measurements in mm



A: Electric

B: Gas - from upper edge of pan support

C: Electric - for Australia and New Zealand