

N 70, INTEGRATED RANGEHOOD, 86 CM,  
STAINLESS STEEL  
D58ML66N1A



Z5135X1	Standard odor filter (replacement)
Z5135X3	Standard recirculation kit
Z51ITD1X1	Long Life recirculation kit external
Z51ITP0X0	Long Life odor filter (replacement)
Z51IXB1X6	Clean Air Plus odor filter (replacement)
Z51IXC1X6	Clean Air Plus recirc. kit external

Designed to fit neatly under an overhead canopy kitchen unit, saving valuable space, but still doing the job effectively.

- ✓ Efficient Drive Motor – Quiet and energy-efficient motor for a calmer kitchen.
- ✓ Intensive Speed Setting: Increases the extraction rate when cooking steam is intense.
- ✓ Dimmer Function: Easily dim the light according to your mood with the touch of a finger.

Typology: ..... Built-in/Built-under  
 Length electrical supply cord: ..... 150.0 cm  
 Min. required niche size for installation (HxWxD): ..... 418mm x 836.0mm x 264mm mm  
 Minimum distance above an electric hob: ..... 600 mm  
 Minimum distance above a gas hob: ..... 650 mm  
 Net weight: ..... 9.6 kg  
 Type of control: ..... Electronic  
 Number of speed settings: ..... 3-stages + intensive setting  
 Maximum output air extraction: ..... 610 m<sup>3</sup>/h  
 Boost position output recirculating: ..... 727 m<sup>3</sup>/h  
 Maximum output recirculating air: ..... 563 m<sup>3</sup>/h  
 Boost position air extraction: ..... 800 m<sup>3</sup>/h  
 Number of lights: ..... 2  
 Noise level: ..... 64 dB(A) re 1pW  
 Diameter of air outlet: ..... 120 / 150 mm  
 Grease filter material: ..... Washable aluminium  
 EAN code: ..... 4242004273547  
 Connection Rating: ..... 172 W  
 Fuse protection: ..... 3 A  
 Voltage: ..... 220-240 V  
 Frequency: ..... 50 Hz  
 Plug type: ..... AU plug  
 Installation typology: ..... Built-in



N 70, INTEGRATED RANGEHOOD, 86 CM,  
STAINLESS STEEL  
D58ML66N1A

#### Design

- Appliance colour: stainless steel
- For installation in a kitchen cabinet
- Suitable for ducted or re-circulated extraction
- Accessories required for recirculated extraction: Recirculating kit

#### Features

- Push button controls (3 power levels + intensive) with Electronic display
- Automatic intensive revert setting - 6 min.
- Automatic run on for 30 min.
- EfficientDrive brushless motor
- Rim ventilation
- Metal grease filters with stainless steel cover
- Dishwasher safe metal grease filters
- Saturation indicator for grease filters
- 2 x 1 Watt LED lights
- Light Intensity: 266 lux
- Colour Temperature: 4000 K

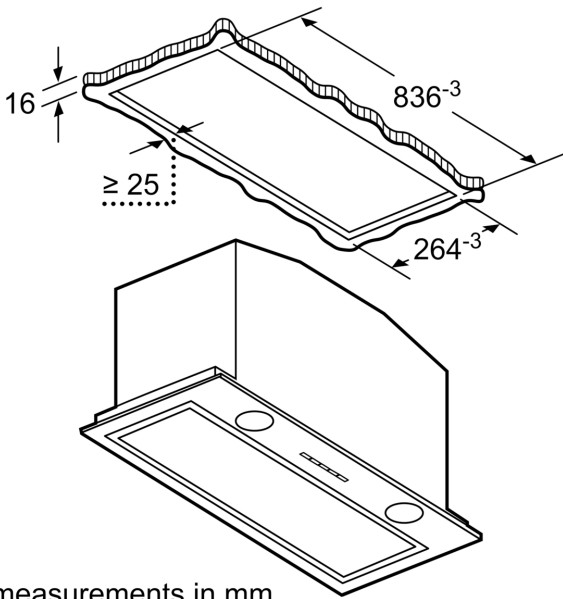
#### Performance

- Extraction rate according to EN 61591:
- Min:210m<sup>3</sup>/h
- Intensive:800 m<sup>3</sup>/h
- Noise level according to EN 60704-3 und EN 60704-2-13 exhaust air:
- Max. normal use:64 dB(A) re 1 pW sound pressure:51dB(A)
- Intensive:70 dB(A) re 1 pW (57 dB(A) re 20 µPa sound pressure)
- Noise min./max. Normal Level: 41/64 dB\*
- Noise level according to EN 60704-2-13 min/max (intensive) with exhaust air: 41/70 dB(A)
- With the Clean Air Plus recirculation kit (available as optional accessory) your appliances reaches:
- Extraction rate in recirculation mode: Max. normal use:563m<sup>3</sup>/h
- Intensive:727m<sup>3</sup>/h
- Noise level in recirculation mode: Max. normal use:71dB(A) re 1 pW
- Intensive:77 dB(A) re 1 pW

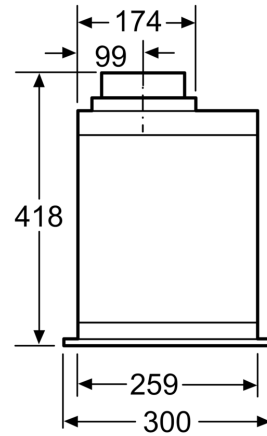
#### Technical information

- Appliance dimensions (HxWxD): 418 x 860 x 300 mm
- Mounting dimensions: width: 84 cm, depth: 26 cm
- Dimensions exhaust air (HxWxD): 418-418 x 860 x 300 mm
- Dimensions recirculating (HxWxD): 418-418 x 860 x 300 mm
- 120 or 150mm tube connected diameter
- Electrical cable length 1.5 m
- 172 W total connected load
- One way airflow: prevents air leaking inside when the rangehood is not in use

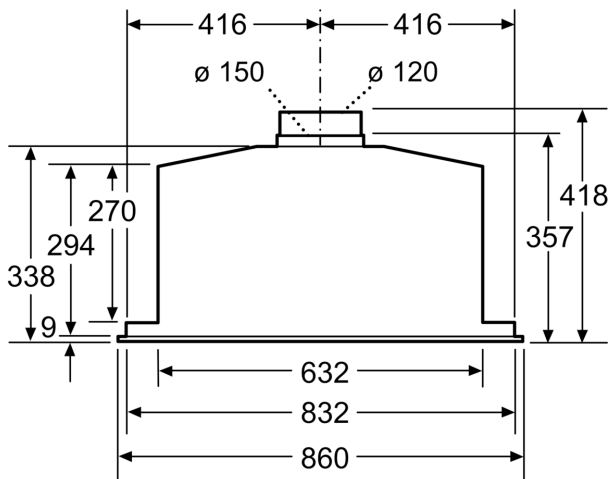
N 70, INTEGRATED RANGEHOOD, 86 CM,  
STAINLESS STEEL  
D58ML66N1A



measurements in mm



measurements in mm



measurements in mm